

# Bull Barn Genetics

Gelbvieh Semen Catalog

2008

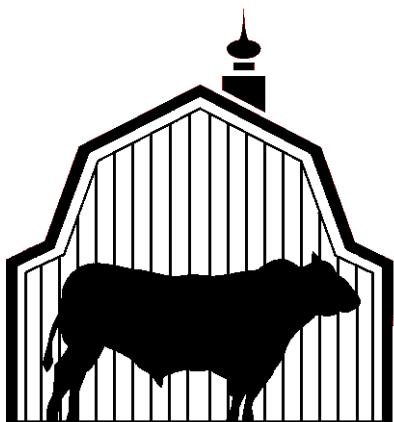


# Bull Barn Genetics

## Gelbvieh Semen 2008

In the past few years, the beef industry has changed more than any other 20 year period. We too, are making changes in the merchandising of semen. We have on our website ([www.bullbarn.com](http://www.bullbarn.com)) the pictures of sires for you to view. You may print a copy in catalog form of the pictured bulls from our website. Enclosed is a complete listing of Gelbvieh genetics available in today's market. The order is black, balancers and red.

If we can be of any service, let our over 40 years of semen knowledge in Gelbvieh and other breeds help lead your program down a path of success. Progeny are the true transmission of genetics, and we encourage more emphasis on looking a progeny as they become available. We have provided the EPDs and Accuracy to help in your sore selection. We have listed the high quality Black Angus and Red Angus sires that work well for the Balancer programs.



**Eldon and Kathy Starr**

210 Starr Drive

Stapleton, NE 69163

**Phone: 1-800-535-6173**

**FAX: 1-308-587-2248**

**Email: [bullbarn@accessdirectwb.net](mailto:bullbarn@accessdirectwb.net)**

**Web: [www.bullbarn.com](http://www.bullbarn.com)**

### Disclaimer of Warranty

Bull Barn Genetics and its agents or employees cannot grant the conception rate, quality or productivity to be obtained in connection with the use of its products or recommended techniques. Therefore, it makes no warranty of any kind whatsoever expressed or implied, which extends beyond description of the products herein and all warranties of merchantability and fitness for a particular purpose and hereby disclaimed. Furthermore, neither Bull Barn Genetics nor any of its or their agents or employees shall be responsible for any inquiry, damage, or loss caused to persons, animals, or property through the negligent use or handling of its or their products, or for any damage or loss due to any defects in the containers used in connection therewith.

**BABR Playboy**

AMGV811614

Born: 3/14/2002 Semen:\$ 30

CE	BW	WW	YW	M	TM	GL	CED	SC	REA	MB
105	0.6	41	68	18	39	-2.5	105	0.5	0.01	-0.06
.48	.78	.63	.40	.23		.69	.24	.51	.42	.36

EPDs for January 2008 **Dbl Polli/Scurred Homo Black**

Balance in EPD's and genetics to make great females.

**Black**

Quality Grade	QG GPD
Tenderness	T GPD
Feed Efficiency	FE GPD

JNS MR IMAGE 6E ET  
LWHF FEARLESS  
JNS MISS CAROLINA POWER 25

SPUR BERETTA 703G  
GDX 23K  
GDX 01E

**BCFG Butlers Ole Hickory 359R**

AMGV938083

Born: 1/8/2005 Semen:\$ 25

CE	BW	WW	YW	M	TM	GL	CED	SC	REA	MB
102	2.5	44	78	13	35	-1.4	103	0.5	-0.09	-0.08
.20	.33	.22	.17	.12		.17	.10			

EPDs for January 2008 **Homo Polled Hetero Black**

Butler Creek Farms Ole Hickory 359R swept the Junior Bull Calf Championship and was talk of the 2005 Louisville Show. His first calf maternal plus dam possesses excellence in the teat/udder department. Performance plus individual with an incredible 959 pound 205 day weight.

**Black**

Quality Grade	QG GPD
0	0
Tenderness	T GPD
2	0
	-0.698
Feed Efficiency	FE GPD

FHG FLYING H EXTRA 150D  
BTI EXTRA 2106K ET  
BTI LADY GRANITE 2001E ET

SLC RATED-R KIOSK 115K  
TJB ASK NO QUESTIONS 359N E  
SLC ANITA 19F ET

**BDCG Citizen F39L ET**

AMGV750442

Born: 1/6/2001 Semen:\$ 20

CE	BW	WW	YW	M	TM	GL	CED	SC	REA	MB
110	-2.1	34	71	13	30	-5.7	109	-0.2	0.05	-0.23
.46	.79	.69	.48	.30		.58	.28	.30	.52	.47

EPDs for January 2008 **Hetero Polled Hetero Black**

Citizen was the second high-selling bull in the 2002 National Gelbvieh Sale and is first calf crop looks very impressive. Citizen's famous dam, DCSF Post Rock Arata 39F2 co-owned by Post Rock Cattle Co., and Beying's Dawson Creek has produced numerous sale toppers on the National level. His first calf crop is exhibiting his super rump structure/eye appeal.

**Black**

Quality Grade	QG GPD
Tenderness	T GPD
Feed Efficiency	FE GPD

VAA LEACHMAN NEW DAY 205B  
SLC FREEDOM 178F ET  
BB MISS 61Y

DCSF POST ROCK HEARTLAND  
DCSF POST ROCK ARATA 39F2  
DCSF POST ROCK ARATA 32C2

**BETZ Alydar 22M44**

AMGV793779

Born: 3/25/2002 Semen:\$ 20

CE	BW	WW	YW	M	TM	GL	CED	SC	REA	MB
99	2.7	51	88	16	42	-0.3	104	1.1	0.04	0.07
.40	.66	.52	.26	.21		.48	.16	.16	.47	.41

EPDs for January 2008 **Polled Homo Black**

Alydar displays a great balance of EPDs and phenotype. He's homozygous for the favorable GeneSTAR Tenderness Gene. Alydar has a quiet disposition and comes from a Dam of Merit cow family. Look for Alydar to become a great breeding sire.

**Black**

Quality Grade	QG GPD
Tenderness	T GPD
Feed Efficiency	FE GPD

GKT BOO BOO 155E  
XXB DREW 565K  
EGL G565

LWHF BLACK IMAGINATION  
BETZ MS ALLYSON 22K32  
BETZ ILLINETTE G95 ET

**BNC P455 "Raisin the Bar"**

AMGV913043

Born: 3/26/2004 Semen:\$ 20

CE	BW	WW	YW	M	TM	GL	CED	SC	REA	MB
96	4.4	78	130	22	61	-1.2	103	1.3	0.15	-0.04
.34	.59	.47	.22	.15		.32	.13	.29	.20	.18

EPDs for January 2008 **Polled Black**

Raisin the Bar was purchased for his outcross genetics and his amazingly powerful growth. He logged an amazing 1016 pound adjusted weaning weight and a 1546 pound yearling weight. He had a 41 cm scrotal and a 16.3 adjusted ribeye area. Carcass and reproductive traits all in one package.

**Black**

Quality Grade	QG GPD
Tenderness	T GPD
Feed Efficiency	FE GPD

JCGR BAR GT EINSTEIN  
HAD THE JUDGE ET  
CDBG MISS MEG 63F

WAC ELK NIGHT RYDER 522E E  
BNC J914  
BNC G743

**BTI Extra 2106K ET**



AMGV 714886

Born: 3/5/2000 Semen:\$ 25

<b>CE</b>	<b>BW</b>	<b>WW</b>	<b>YW</b>	<b>M</b>	<b>TM</b>	<b>GL</b>	<b>CED</b>	<b>SC</b>	<b>REA</b>	<b>MB</b>
104	-0.6	41	72	1	22	-1.8	104	0.4	-0.18	-0.16
.72	.91	.85	.74	.37		.86	.32	.72	.61	.57

EPDs for January 2008 **Homo Polled Hetero Black**

2106K is one of Beartooth Ranches, MT hottest bulls right now out of the legendary donor, Lady Granite 2001E. The Extra 2106K calves look ultra complete and sound with plenty of performance. A complete package with phenotype, great dam.

Black	
<b>Quality Grade</b>	<b>QG GPD</b>
0 0	
<b>Tenderness</b>	<b>T GPD</b>
2 0 1	-1.098
<b>Feed Efficiency</b>	<b>FE GPD</b>

KCF BENNETT PREMIER Z104  
 FHG FLYING H EXTRA 150D  
 FHG MS FHG NITE LADY 50A  
 POW BTI ZORRO 2143Z  
 BTI LADY GRANITE 2001E ET  
 KAB LADY GRANITE 432S

**CTR Echo 575E**



AMGV 488923

Born: 4/2/1995 Semen:\$ 20

<b>CE</b>	<b>BW</b>	<b>WW</b>	<b>YW</b>	<b>M</b>	<b>TM</b>	<b>GL</b>	<b>CED</b>	<b>SC</b>	<b>REA</b>	<b>MB</b>
98	2.1	41	67	26	47	-2.2	105	0.9	0.25	-0.35
.80	.95	.92	.85	.82		.92	.74	.83	.90	.89

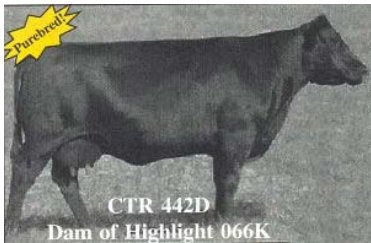
EPDs for January 2008 **Homo Polled Homo Black**

Echo is one of the most popular black sires in the breed. He consistently sires thick, wide based, stout, feminine females with plenty of milk. His progeny have more Grand and Reserve Champions than any other sire. If muscle, correct structure, and overall quality are your needs in Gelbvieh, look no further.

Black	
<b>Quality Grade</b>	<b>QG GPD</b>
0 0 0 0	0
<b>Tenderness</b>	<b>T GPD</b>
1 0 0	-0.349
<b>Feed Efficiency</b>	<b>FE GPD</b>

BEA POLLED MIDNIGHT  
 MCJ BLACK HUSKER  
 OLY 30X  
 AAA TOM HORN  
 CTR CEDAR TOP'S MISS POWER  
 CTR STAR FLOPRIM 659U

**CTR Highlight 066K**



CTR 442D  
 Dam of Highlight 066K

AMGV 721537

Born: 3/30/2000 Semen:\$ 35

<b>CE</b>	<b>BW</b>	<b>WW</b>	<b>YW</b>	<b>M</b>	<b>TM</b>	<b>GL</b>	<b>CED</b>	<b>SC</b>	<b>REA</b>	<b>MB</b>
98	2.6	47	84	17	41	-1.7	105	0.9	-0.09	-0.04
.44	.81	.71	.47	.17		.64	.11	.21	.31	.22

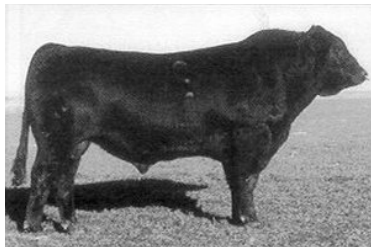
EPDs for January 2008 **Homo Polled Homo Black**

Spring 2005 New Sire Addition...produced top selling bull in Cedar Top Ranch spring 2005 bull sale.  
 066K's sire in a structured carcass test yielded the highest carcass weights-all "choice" except one "select," making him the top bull in the evaluation.  
 Dam, CTRG 442D, is one of the most dominant females at Cedar Top Ranch and in the Gelbvieh breed.  
 Super combo of excellent EPD strength and flawless phenotype.  
 Semen is limited.

Black	
<b>Quality Grade</b>	<b>QG GPD</b>
<b>Tenderness</b>	<b>T GPD</b>
<b>Feed Efficiency</b>	<b>FE GPD</b>

CTR SARGE 563E  
 MCJ RJ HIGHLIGHT 732H  
 MCJ RJ 529E  
 CTR CEDAR TOP'S BERKLEY  
 CTRG 442D  
 POW MISS SANDHILLS 65A

**CTRG Limited Edition 411D1**



AMGV 439840

Born: 3/17/1994 Semen:\$ 15

<b>CE</b>	<b>BW</b>	<b>WW</b>	<b>YW</b>	<b>M</b>	<b>TM</b>	<b>GL</b>	<b>CED</b>	<b>SC</b>	<b>REA</b>	<b>MB</b>
109	-3.2	35	58	32	50	-2.4	105	0.1	-0.08	-0.07
.76	.89	.84	.70	.66		.85	.54	.68	.79	.77

EPDs for January 2008 **Polled Black**

Limited Edition has been a standby for calving ease. He currently is a trait leader for calving ease, birth weight, milk, gestation length, and calving ease of daughters. His daughters are easy fleshing with muscle and volume. Limited Edition's dam, Tiffany, is famous at Cedar Top Ranch and has continued to be an elite cow in the breed.

Black	
<b>Quality Grade</b>	<b>QG GPD</b>
<b>Tenderness</b>	<b>T GPD</b>
<b>Feed Efficiency</b>	<b>FE GPD</b>

KCF VIRGINIAN  
 KCF BENNETT PREMIER Z104  
 GAA GARST COW R9599  
 MCJ BLACK HUSKER  
 CTRG CEDAR TOP'S TIFFANY  
 CTRG CEDAR TOPS TIFFANY

**CTRG Vision 52E**



AMGV 544174

Born: 9/9/1995 Semen:\$ 25

<b>CE</b>	<b>BW</b>	<b>WW</b>	<b>YW</b>	<b>M</b>	<b>TM</b>	<b>GL</b>	<b>CED</b>	<b>SC</b>	<b>REA</b>	<b>MB</b>
104	0.9	42	77	13	34	-1.6	101	0.8	0.14	-0.14
.50	.83	.72	.46	.52		.75	.41	.43	.63	.59

EPDs for January 2008 **Homo Polled Homo Black**

CTRG Vision 52E is a recently released syndication bull that has been not available to the public. Vision is the ultimate female producer. They are femine fronted and very structurally correct with perfect udders. Commercial cattlemen have demanded sons for years at bull sales where available. Vision sons have been sale toppers for many years. Use this great breeding bull to add marketability and quality to your calf crop.

Black	
<b>Quality Grade</b>	<b>QG GPD</b>
<b>Tenderness</b>	<b>T GPD</b>
<b>Feed Efficiency</b>	<b>FE GPD</b>

BEA POLLED MIDNIGHT  
 MCJ BLACK HUSKER  
 OLY 30X  
 ATM TEJAS ROLLS ROYCH 868  
 CTR CEDAR TOPS 010Y  
 CTR BLACK POLL STARR 212W

**DAR National 302N**

AMGV 846221

Born: 2/4/2003 Semen:\$ 20

CE	BW	WW	YW	M	TM	GL	CED	SC	REA	MB
102	0.2	48	99	21	45	-1.9	106	0.5	0.31	0.13
.31	.51	.40	.29	.17		.31	.15	.21	.33	.26

EPDs for January 2008 **Homo Polled Homo Black**

Homozygous black and homozygous polled with three stars of tenderness. National sired the second high selling bull at the 2007 Iowa Beef Expo. His progeny look great!

**Black**

Quality Grade	QG GPD
0 0	
Tenderness	T GPD
2 0 1	-1.098
Feed Efficiency	FE GPD

MLLC M/L ADVANTAGE  
FHG VVFG FLYING H EXCLUSIVE  
FHG FLYING H CADISISTER 95E

GKT BUD 11G  
FHG FLYING H MS BUD 240L ET  
CKA WOODLAND BELLE 217B

**DAR Rawhide 201M ET**

AMGV 795575

Born: 1/25/2002 Semen:\$ 25

CE	BW	WW	YW	M	TM	GL	CED	SC	REA	MB
98	4.6	60	102	6	36	-2.5	106	0.2	0.32	-0.14
.39	.74	.64	.41	.24		.54	.21	.30	.37	.30

EPDs for January 2008 **Homo Polled Homo Black**

Rawhide was Cedar Top Ranches, NE pick at the 2003 Iowa Beef Expo. He looks to be the next step in genetics from the great Bronco. Rawhide is long, thick and deep, and of course, great profiled.

**Black**

Quality Grade	QG GPD
Tenderness	T GPD
Feed Efficiency	FE GPD

CSG ELK BLACK PLD KENO 26E  
ELK CK BRONCO 411G  
ELK 411D

JEB POLLED GIZMO 17Z  
CKA WOODLAND BLACKBIRD 62  
CKA WOODLAND BLACKBIRD 43

**DCH Hille M118 Majesty**

AMGV 819729

Born: 3/7/2002 Semen:\$ 20

CE	BW	WW	YW	M	TM	GL	CED	SC	REA	MB
119	-6	47	88	23	47	-5.3	112	0.7	0.05	0.04
.48	.73	.63	.37	.20		.64	.20	.54	.45	.39

EPDs for January 2008 **Double Polled Black**

Look at birth, growth and profile.

**Black**

Quality Grade	QG GPD
Tenderness	T GPD
Feed Efficiency	FE GPD

JBOB CAROLINA POWER  
DCH HILLE K23 KODIAK  
DCH F04

TLR COCOA 35C  
DCH HILLE J01 JERI  
DCH G10

**DCJ Hillcrest Sir Nottingham**

AMGV 714870

Born: 1/5/2000 Semen:\$ 20

CE	BW	WW	YW	M	TM	GL	CED	SC	REA	MB
102	2.1	50	93	12	37	-1.9	102	0.4	0.13	-0.18
.40	.72	.60	.24	.29		.38	.20	.18	.34	.28

EPDs for January 2008 **Homo Polled Hetero Black**

Proven homozygous polled, black Freedom son that's really been a crowd favorite in the National Gelbvieh show.

Sir Nottingham reigned as the 2001 Reserve Division II National Champion Bull Calf. In the year 2002 he swept Division V National Champion Bull honors.

This proven sire is producing the right kind with tremendous extension, muscle and body mass along with flawless eye appeal.

Performance plus individual out of a highly productive Dr Pepper daughter with a 108 weaning weight ratio.

**Black**

Quality Grade	QG GPD
Tenderness	T GPD
Feed Efficiency	FE GPD

VAA LEACHMAN NEW DAY 205B  
SLC FREEDOM 178F ET  
BB MISS 61Y

TAU DR PEPPER 29D  
DCJ MS 850H  
DJS MISS SWANSON 173D

**DCSF Post Rock Granite 200P2**

AMGV 930426

Born: 9/15/2004 Semen:\$ 20

CE	BW	WW	YW	M	TM	GL	CED	SC	REA	MB
107	-0.5	53	93	14	41	-2.8	104	0.4	0.05	-0.07
.31	.54	.40	.21	.11		.18	.10	.11		

EPDs for January 2008 **Homo Polled Homo Black**

200P2 was the most exciting bull to sell in the 2006 sale season. He posted a 110 WW ratio, and is in the top 10% of the breed for WW, top 5% for YW, and top 30% for Calving Ease and low Birth Weight. Top genetics for growth, eye appeal with a moderate birth EPD.

**Black**

Quality Grade	QG GPD
0 0	
Tenderness	T GPD
1 0 0	-0.349
Feed Efficiency	FE GPD

BTI EXTRA 2106K ET  
BTI GRANITE 2135M  
BTI ELECTRA B 2001H

MRCO NEW DIRECTION 905  
DCSF POST ROCK TWILA 223M2  
DCSF POST ROCK TWILA 3F2

**DKCB Buford 07N ET**

AMGV 848284

Born: 3/28/2003 Semen:\$ 25

CE	BW	WW	YW	M	TM	GL	CED	SC	REA	MB
112	-2.2	34	62	21	38	-4.7	111	0.8	0.12	-0.07
.39	.65	.51	.28	.20		.56	.18	.21	.34	.27

EPDs for January 2008 **Homo Polled** **Homo Black**

Lower birth, bred for easy fleshing capacity and making females.

**Black**

Quality Grade	QG GPD
0 0	
Tenderness	T GPD
1 0 0	-0.349
Feed Efficiency	FE GPD

KCF BENNETT VALUE B246  
KCF BENNETT BONUS F95  
KCF MISS CLASSIC X28

CTR ECHO 575E  
JBOB 2409J ET  
JBOB MISS 92C

**EGL Northern Exposure J171**

AMGV 673158

Born: 3/7/1999 Semen:\$ 25

CE	BW	WW	YW	M	TM	GL	CED	SC	REA	MB
100	3.3	44	80	12	34	0.1	103	0.9	0.14	-0.01
.49	.85	.76	.62	.40		.81	.28	.63	.68	.64

EPDs for January 2008 **Homo Polled** **Black**

Northern Exposure has loads of muscle on a great structural pattern. He carries two stars for Tenderness! Northern Exposure is adding lots of performance for Eagle Pass Ranch, SD and is producing real cattlemen's kind...deep and thick with a good look.

**Black**

Quality Grade	QG GPD
Tenderness	T GPD
Feed Efficiency	FE GPD

KCF BENNETT PREMIER Z104  
FHG FLYING H EXTRA 150D  
FHG MS FHG NITE LADY 50A

KCF BENNETT HORIZON  
EGL C111 ET  
MAZ GRANITE'S MISSY

**EGR Ellison 608F**

AMGV 541139

Born: 3/10/1996 Semen:\$ 18

CE	BW	WW	YW	M	TM	GL	CED	SC	REA	MB
112	-1.9	23	46	20	32	-1.8	107	1.1	0.07	-0.01
.56	.79	.70	.44	.35		.39	.25	.53	.42	.37

EPDs for January 2008 **H Polled** **H Black**

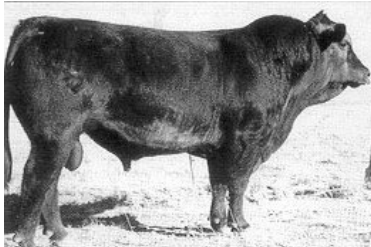
"Mitch" will give the breeder calving ease along with new genetics for many breeding programs. The calves are vigorous at birth but keep growing with nice tops, expression of muscling and plenty of capacity. Look for Mitch to add maternal traits and a great set of daughters to the most discriminating breeding programs.

**Black**

Quality Grade	QG GPD
Tenderness	T GPD
Feed Efficiency	FE GPD

ATM TEJAS ROLLS ROYCH 868  
PBSD BLACK TIE 123A  
MCG MISS MCG 59X

EGR BLACK BOB  
EGR D7  
EGR B76

**ELK Ace Ventura 234F**

AMGV 536298

Born: 3/13/1996 Semen:\$ 18

CE	BW	WW	YW	M	TM	GL	CED	SC	REA	MB
115	-3.3	22	54	11	22	-2.5	105	0	0.03	0.12
.82	.91	.87	.76	.70		.87	.54	.74	.84	.82

EPDs for January 2008 **Homo Polled** **Homo Black**

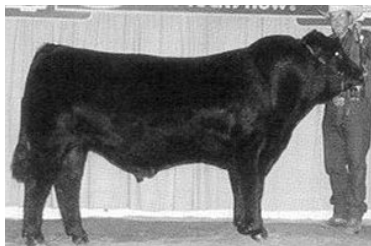
Ace Ventura is a sire to use on heifers and expect almost no assistance and the calves will be black and polled. The females are heavy milking, easy fleshing, and good uddered. Ace Ventura will work well on large frame females.

**Black**

Quality Grade	QG GPD
Tenderness	T GPD
Feed Efficiency	FE GPD

KCF BENNETT PREMIER Z104  
MLLC M/L ADVANTAGE  
CTR CEDAR TOP'S PERFECTA

JEB ACE OF SPADES 10X  
ELK SPADES LADY DPBK 234A  
POW MISS BLK IMP 11X

**ELK CK Bronco 411G**

AMGV 586994

Born: 4/10/1997 Semen:\$ 30

CE	BW	WW	YW	M	TM	GL	CED	SC	REA	MB
103	2.6	60	112	-1	29	-2.2	105	0.6	0.28	-0.05
.77	.94	.90	.82	.74		.90	.65	.81	.88	.87

EPDs for January 2008 **Homo Polled** **Homo Black**

Bronco will be an outcross for many programs and adds performance and eye appeal to his progeny. His balance of traits along with his physical eye appeal will add many dollars to his progeny. Look for his progeny to be the most talked about Gelbvieh, whether it be at shows or on weigh day.

**Black**

Quality Grade	QG GPD
0 0	
Tenderness	T GPD
2 0 0	-0.698
Feed Efficiency	FE GPD

FHG FLYING H CADILLAC 184C  
CSG ELK BLACK PLD KENO 26E  
LBW MS GIL PADDY 110W 11Z

ELK CK NIGHT TRAIN POLL 28Z  
ELK 411D  
RON 250X

**ELK CK Crazy Horse 138P**



AMGV 902554  
Born: 2/28/2004 Semen: \$20

CE	BW	WW	YW	M	TM	GL	CED	SC	REA	MB
102	2.9	53	104	19	46	-1.7	104	0.9	0.04	0.07
.37	.72	.53	.28	.14		.64	.12	.36	.29	.22

EPDs for January 2008 **Polled** **Black**

Crazy Horse is an attractive patterned, level topped bull who posses loads of muscle shape. He was Division Champion at the 2006 NWSS. Crazy Horse's maternal grand-dam is a Dam of Merit, and her dam has been a Dam of Distinction for years.

Black	
Quality Grade	QG GPD
Tenderness	T GPD
Feed Efficiency	FE GPD

GKT BOO BOO 155E  
GRU ELK DEE JAKE 744J  
GRU MS COCOA 744G  
  
EGR ELK CREEK LONER 712G  
ELK CK KERRY 138L  
ELK CK KITTEN 826H

**FHG Flying H Cadillac 184C**



AMGV 384878  
Born: 3/6/1993 Semen: \$15

CE	BW	WW	YW	M	TM	GL	CED	SC	REA	MB
106	2.4	48	87	20	44	0.4	108	1.7	0.05	-0.08
.72	.91	.87	.74	.75		.88	.67	.72	.83	.82

EPDs for January 2008 **Polled** **Black**

There are a few units of semen left on this proven sire.

Black	
Quality Grade	QG GPD
Tenderness	T GPD
Feed Efficiency	FE GPD

KCF VIRGINIAN  
KCF BENNETT PREMIER Z104  
GAA GARST COW R9599  
  
VTG BEL BOY 367U  
FHG 22Y  
FHG MS FLYING H 43U

**FHG Flying H Extra 150D**



AMGV 427849  
Born: 2/25/1994 Semen: \$20

CE	BW	WW	YW	M	TM	GL	CED	SC	REA	MB
111	-1.6	33	53	12	29	-2.6	105	0.3	-0.17	-0.01
.91	.96	.94	.89	.87		.94	.81	.88	.93	.92

EPDs for January 2008 **Homo Polled** **Homo Black**

Extra is a highly proven calving ease bull with the added feature of being homozygous black and homozygous polled. Along with being a heavily used sire, he produces marketability in his progeny. He has been used on large frame cows and higher birth weight females to moderate the progeny.

Black	
Quality Grade	QG GPD
Tenderness	T GPD
Feed Efficiency	FE GPD

0 0 0 2 10.58  
2 0 0 -0.698

KCF VIRGINIAN  
KCF BENNETT PREMIER Z104  
GAA GARST COW R9599  
  
GNG NIGHT HAWK 08X  
FHG MS FHG NITE LADY 50A  
FHG MR FHG BEL BOY 114Y

**FHG Flying H IdealTime311KET**



AMGV 737828  
Born: 9/16/2000 Semen: \$20

CE	BW	WW	YW	M	TM	GL	CED	SC	REA	MB
102	1.5	39	61	15	35	-1.8	102	0.7	0.21	-0.01
.42	.71	.60	.43	.29		.44	.24	.35	.48	.44

EPDs for January 2008 **Polled** **Black**

This sire has some outcross genetics and a balance of EPD's.

Black	
Quality Grade	QG GPD
Tenderness	T GPD
Feed Efficiency	FE GPD

KCF BENNETT ARSENAL E123  
KCF BENNETT IDEAL G182  
KCF MISS VISION E43  
  
GNG NIGHT HAWK 08X  
FHG MS FHG NITE LADY 50A  
FHG MR FHG BEL BOY 114Y

**FHG VVFG Flying H Exclusive**



AMGV 621246  
Born: 3/18/1998 Semen: \$40

CE	BW	WW	YW	M	TM	GL	CED	SC	REA	MB
111	-2.6	42	103	27	48	-3	111	0.6	0.22	0.37
.72	.90	.84	.73	.52		.84	.45	.72	.77	.76

EPDs for January 2008 **Polled** **Black**

Exclusive puts a phenomenal EPD package together across the board. In addition to owning tremendous low birth to high growth numbers, his marbling EPD is in the top 1% and his REA is in the top 15% of the breed. Limited semen availability.

Black	
Quality Grade	QG GPD
Tenderness	T GPD
Feed Efficiency	FE GPD

0 0  
1 0 1 -0.749

KCF BENNETT PREMIER Z104  
MLLC M/L ADVANTAGE  
CTR CEDAR TOP'S PERFECTA  
  
KCF BENNETT PREMIER Z104  
FHG FLYING H CADISISTER 95E  
FHG 22Y

**GGGE 3G Rio Bravo 564R**



<b>CE</b>	<b>BW</b>	<b>WW</b>	<b>YW</b>	<b>M</b>	<b>TM</b>	<b>GL</b>	<b>CED</b>	<b>SC</b>	<b>REA</b>	<b>MB</b>
100	2.5	45	84	13	36	-3.1	105	0.5		
.26	.41	.32	.18	.18		.39	.17	.16		

EPDs for January 2008 **Polled** **Black**

Exciting new black polled sire that swept the '06 American Royal and Louisville shows. Exceptional disposition. Cowman kind of bull - loaded with beef, butt and guts. Powerful 3G cow family with Rio Bravo's dam sporting a 106 weaning weight ratio.

AMGV 940384

Born: 3/11/2005 **Semen:\$ 30**

Black	
<b>Quality Grade</b>	<b>QG GPD</b>
0 1	
<b>Tenderness</b>	<b>T GPD</b>
2 0 0	-0.698
<b>Feed Efficiency</b>	<b>FE GPD</b>

VAA LEACHMAN NEW DAY 205B  
SLC FREEDOM 178F ET  
BB MISS 61Y

GGGR 3G COWBOY 155L  
GGGE 3G COWGIRL NOTIONS 3  
GGGE 3G COWGIRL LYDIA 147L

**GKT Boo Boo 155E**



<b>CE</b>	<b>BW</b>	<b>WW</b>	<b>YW</b>	<b>M</b>	<b>TM</b>	<b>GL</b>	<b>CED</b>	<b>SC</b>	<b>REA</b>	<b>MB</b>
107	0.1	36	69	23	41	-2.8	107	0.7	0.38	0.29
.84	.94	.91	.83	.80		.91	.73	.82	.89	.88

EPDs for January 2008 **Hetero Polled** **Hetero Black**

Heterozygous black, heterozygous polled. Breed leading EPDs - ranks in the top 20% of the breed for 10 traits including REA and MARB. Sired the 1998 Breeders Choice Futurity Champion and National Champion Bull. Heavy muscled, deep ribbed, easy fleshing, and structurally correct.

AMGV 477661

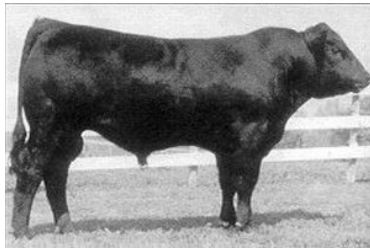
Born: 1/11/1995 **Semen:\$ 16**

Black	
<b>Quality Grade</b>	<b>QG GPD</b>
0 0 0 1	5.29
<b>Tenderness</b>	<b>T GPD</b>
2 0 0	-0.698
<b>Feed Efficiency</b>	<b>FE GPD</b>

KCF BENNETT PREMIER Z104  
FHG FLYING H CADILLAC 184C  
FHG 22Y

CCD RUSTLER  
CCD X55  
CCD GRAND RIVER 137T

**GKT Bud 11G**



<b>CE</b>	<b>BW</b>	<b>WW</b>	<b>YW</b>	<b>M</b>	<b>TM</b>	<b>GL</b>	<b>CED</b>	<b>SC</b>	<b>REA</b>	<b>MB</b>
109	-1.4	43	79	13	35	-2.5	104	0.2	0.42	0
.82	.93	.89	.81	.77		.90	.69	.81	.88	.87

EPDs for January 2008 **H Polled** **Black**

Bud was the 1998 Grand Champion Bull at the National Western Stock Show and the 1998 Breeders Choice Futurity Champion bull. Bud puts calving ease, growth, and eye appeal in his progeny. His first calf crop has created excitement across the United States.

AMGV 567881

Born: 1/5/1997 **Semen:\$ 20**

Black	
<b>Quality Grade</b>	<b>QG GPD</b>
<b>Tenderness</b>	<b>T GPD</b>
<b>Feed Efficiency</b>	<b>FE GPD</b>

FHG FLYING H CADILLAC 184C  
GKT BOO BOO 155E  
CCD X55

DCJ MR PEPPER SHAKER  
GKT KATIE  
PHG PRAIRIE LIZA A22

**GKT Dusty 16J**



<b>CE</b>	<b>BW</b>	<b>WW</b>	<b>YW</b>	<b>M</b>	<b>TM</b>	<b>GL</b>	<b>CED</b>	<b>SC</b>	<b>REA</b>	<b>MB</b>
109	-1.2	34	74	10	27	-4.7	107	0.1	0.18	-0.01
.67	.86	.79	.59	.46		.82	.37	.63	.68	.65

EPDs for January 2008 **Homo Polled** **Homo Black**

The \$17,000 bull that should receive a great deal of attention from producers that are breeding their first calf heifers. Style with substance is an apt description of Dusty. First calves are coming easy and to date all appear to be polled. The bull deserves your attention - - he will be an "impact player". Recommended for first calf heifers.

AMGV 655343

Born: 1/6/1999 **Semen:\$ 25**

Black	
<b>Quality Grade</b>	<b>QG GPD</b>
<b>Tenderness</b>	<b>T GPD</b>
<b>Feed Efficiency</b>	<b>FE GPD</b>

GKT BOO BOO 155E  
GKT BUD 11G  
GKT KATIE

DDF OTIS ET  
GKT 45F  
GAR GAUGLER LADY 440D

**GPE Widespread 3L**



<b>CE</b>	<b>BW</b>	<b>WW</b>	<b>YW</b>	<b>M</b>	<b>TM</b>	<b>GL</b>	<b>CED</b>	<b>SC</b>	<b>REA</b>	<b>MB</b>
100	4.2	33	65	14	31	-0.1	105	0.2	-0.04	-0.06
.42	.72	.60	.40	.28		.61	.22	.42	.33	.26

EPDs for January 2008 **Hetero Polled** **Homo Black**

Tremendous low birth to super growth spread with incredible rib, volume and capacity in a phenotypically flawlessly made package. Beautiful Dam of Merit dam with a perfect teat/udder quality. Dam ratios: 93 BW, 103 WW and 109 YW (Widespread at 1,383). Dam's second calf only weighed 68 pounds at birth while spreading growth at 748 pounds.

AMGV 774454

Born: 1/24/2001 **Semen:\$ 10**

Black	
<b>Quality Grade</b>	<b>QG GPD</b>
0 0	
<b>Tenderness</b>	<b>T GPD</b>
2 0 1	-1.098
<b>Feed Efficiency</b>	<b>FE GPD</b>

JBOB CAROLINA 911  
JBOB CAROLINA PARKWAY  
REMC SHOW GIRL ET 517E

FHG FLYING H EXTRA 150D  
GPE SWEETIE'S BABY DOLL 1J  
JRI PLD GRAND PRIX 108G61

**HYEK Black Impact 3960N**

CE	BW	WW	YW	M	TM	GL	CED	SC	REA	MB
102	1.4	44	72	16	38	-2.3	102	0.2	0.01	0.01
.30	.57	.40	.24	.11		.21	.09	.31	I	I

EPDs for January 2008      **Homo Polled**      **Homo Black**

Progeny are looking impressive, moderate frame and muscle expression. Black Impact comes from a proven dam.

AMGV 844875

Born: 2/7/2003      Semen: \$25

**Black**

Quality Grade	QG GPD
1 0	
Tenderness	T GPD
2 0 0	-0.698
Feed Efficiency	FE GPD

ELK CK SCORPION 2343H ET  
HYEK BLACK IMPULSE 1296L  
OAKK VALLEY LADY 296J

FHG FLYING H EXTRA 150D  
HYEK BLACK RUBY 9604J  
HYEK DOTTIE F6048

**JBOB 2279J ET (Carolina RC)**

CE	BW	WW	YW	M	TM	GL	CED	SC	REA	MB
98	2.8	59	94	16	46	-1.3	106	1.6	0.31	-0.12
.51	.86	.78	.59	.47		.73	.45	.60	.71	.68

EPDs for January 2008      -      **Black**

Full brother to J-Bob 241J "Julia", the Champion Female at 2001 North American and 2001 National Western  
Daughters are long necked, clean fronted, feminine females while sons are high performing with an attractive look.  
Brings in greatness of Echo and Sherman Tank. Adds pounds, muscle, volume rib in an attractive package.

AMGV 677948

Born: 3/30/1999      Semen: \$20

**Black**

Quality Grade	QG GPD
0 0	
Tenderness	T GPD
1 0 0	-0.349
Feed Efficiency	FE GPD

MCJ BLACK HUSKER  
CTR ECHO 575E  
CTR CEDAR TOP'S MISS POWE

DDM MR SHERMAN TANK  
JBOB MISS 92C  
LDL LL MISS AUGUST

**JBOB 3303K ET "Junior"**

CE	BW	WW	YW	M	TM	GL	CED	SC	REA	MB
104	0.4	42	74	24	45	-3	106	0.4	0.31	-0.12
.54	.82	.72	.48	.31		.71	.29	.49	.42	.35

EPDs for January 2008      **Homo Polled**      **Homo Black**

Top selling bull in the JBOB Farms '05 Complete Dispersal Sale. Junior's maternal pedigree features two of the all-time great homozygous black, homozygous polled females in the breed - Miss 92C and Miss August '84Y'. Miss 92C and Miss August '84Y' progeny commanded all the top dollars in the JBOB Dispersal.  
Proven pedigree, moderate frame, muscle, depth and superior phenotype.

AMGV 708967

Born: 3/24/2000      Semen: \$25

**Black**

Quality Grade	QG GPD
0 0	
Tenderness	T GPD
2 0 0	-0.698
Feed Efficiency	FE GPD

MCJ BLACK HUSKER  
CTR ECHO 575E  
CTR CEDAR TOP'S MISS POWE

DDM MR SHERMAN TANK  
JBOB MISS 92C  
LDL LL MISS AUGUST

**JBOB Carolina Fortune 2564JET**

CE	BW	WW	YW	M	TM	GL	CED	SC	REA	MB
108	1.7	55	109	28	56	-0.5	108	0.8	0.31	0.22
.71	.91	.87	.71	.43		.87	.34	.61	.71	.68

EPDs for January 2008      **Homo Polled**      **Homo Black**

Proven genetics offering extra growth, attractive progeny with EPD's putting your genetics at a higher scale.

AMGV 687061

Born: 11/10/1999      Semen: \$35

**Black**

Quality Grade	QG GPD
0 1	
Tenderness	T GPD
2 0 0	-0.698
Feed Efficiency	FE GPD

JBOB 254D  
JBOB CAROLINA CPR  
JBOB 719E

DDM MR SHERMAN TANK  
JBOB MISS 92C  
LDL LL MISS AUGUST

**JBOB Carolina Hero 4659M ET**

CE	BW	WW	YW	M	TM	GL	CED	SC	REA	MB
108	0.3	35	69	17	35	-2.3	108	0.6	0.12	-0.06
.45	.73	.57	.35	.23		.59	.21	.34	.36	.28

EPDs for January 2008      **Homo Polled**      **Homo Black**

Carolina Hero will be the first Encore son in the Cattlemen's Connection sire line up and note his strong maternal pedigree features on of the breed's all time greats, LDL LL Miss August '84Y'. '84Y' along with her daughters and grandsons commanded all the top dollars in the JBOB Farms Complete Dispersal Sale. Carolina Hero offers you that super blend of calving ease, growth, maternal strength and feedlot merit. GeneSTAR tested three stars for tenderness and one star for marbling.

AMGV 840694

Born: 11/25/2002      Semen: \$20

**Black**

Quality Grade	QG GPD
1 0	
Tenderness	T GPD
2 0 1	-1.098
Feed Efficiency	FE GPD

MLLC M/L ADVANTAGE  
MLLC M/L ENCORE  
MLLC M/L MISS MIDNIGHT 333C

CTR ECHO 575E  
JBOB 2308J ET  
LDL LL MISS AUGUST

**JBOB Carolina Power**

AMGV 408724

Born: 9/9/1993 Semen:\$ 20

CE	BW	WW	YW	M	TM	GL	CED	SC	REA	MB
99	2.9	49	84	20	45	-1.1	101	0.8	-0.06	0.24
.77	.93	.90	.80	.79		.90	.71	.79	.87	.86

EPDs for January 2008 **Hetero Polled Homo Black**

Carolina Power is a calving ease specialist. Progeny have great performance and eye appeal. Daughters milk very well wit lots of phenotype. Produces sons with eye appeal that generate dollars. Supply is limited due to Power's death.

**Black**

Quality Grade	QG GPD
0 0 0 1	5.29
Tenderness	T GPD
2 0 0	-0.698
Feed Efficiency	FE GPD

KCF VIRGINIAN  
KCF BENNETT PREMIER Z104  
GAA GARST COW R9599

CBA CORNHUSKER RED  
HPL MISS HUSKER 029Z  
HPL MISS FLOTATION 719W

**JCGR BAR GT Einstein**

AMGV 520797

Born: 2/12/1996 Semen:\$ 20

CE	BW	WW	YW	M	TM	GL	CED	SC	REA	MB
96	4.2	60	111	15	45	1.8	105	1.1	0.07	0
.62	.89	.83	.66	.67		.81	.59	.66	.78	.75

EPDs for January 2008 **Homo Polled Black**

Einstein is certainly a growth bull that produces progeny with eye appeal. Progeny will have a smooth muscle pattern with depth of rib, volume, and the correctness to improve quality. Use Einstein to add growth!

**Black**

Quality Grade	QG GPD
Tenderness	T GPD
Feed Efficiency	FE GPD

BEA POLLED MIDNIGHT  
TLR COCOA 35C  
TLR MISS KAISER 449Y

BBW PRIME RATE  
HPL MISS PRIME RATE 54U  
MRB 114S

**JCGR Bar GT Mach One 54L**

AMGV 749202

Born: 1/18/2001 Semen:\$ 20

CE	BW	WW	YW	M	TM	GL	CED	SC	REA	MB
102	2.8	31	60	16	32	-1.3	103	0.4	0.04	-0.06
.62	.87	.79	.62	.39		.78	.37	.53	.58	.54

EPDs for January 2008 **Polled/Scur Hetero Black**

The Gelbvieh breed's powerful 2003 National Champion Bull. Mach One topped Jumping Cow Gelbvieh '03 Sale at \$30,000. Mach One's fabulous dam, BDCG Claudia 1144J sold for \$20,000 in the Jumping Cow '03 Sale - Claudia and her progeny grossed over \$90,000.

**Black**

Quality Grade	QG GPD
0 1	
Tenderness	T GPD
1 0 1	-0.749
Feed Efficiency	FE GPD

VAA LEACHMAN NEW DAY 205B  
SLC FREEDOM 178F ET  
BB MISS 61Y

TLR COCOA 35C  
BDCG CLAUDIA 1144J  
BDCG E30

**JHG Premonition 662S ET**

AMGV 1006993

Born: 2/6/2006 Semen:\$ 25

CE	BW	WW	YW	M	TM	GL	CED	SC	REA	MB
109	0.6	39	71	17	37	-0.6	105	0.3	0.13	-0.07
.01	.01	.01	.01	.01		.01	.01	1	.16	.12

EPDs for January 2008

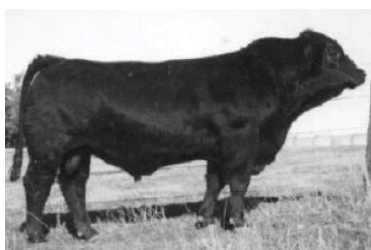
Premonition topped the Spring '07 Midwest Performance Bull Sale and he's one of the most complete young sires to come into the breed for some time. He's sired by the 2005 Breeder's Choice Futurity Bull Pegasus and his famed dam LJS Salley ET is one of the top producing donor females in the country.

**Black**

Quality Grade	QG GPD
Tenderness	T GPD
Feed Efficiency	FE GPD

SLC FREEDOM 178F ET  
PMG PEGASUS 01P  
XXB MISS DREW 221M

FHG FLYING H EXTRA 150D  
LJS SALLEY ET  
HBZ 437Y

**JOB Danell Diamond Six 41L**

AMGV 743983

Born: 3/16/2001 Semen:\$ 20

CE	BW	WW	YW	M	TM	GL	CED	SC	REA	MB
99	3.1	37	70	18	37	-1.9	100	0.6	0.08	-0.18
.46	.78	.68	.53	.28		.61	.21	.50	.41	.34

EPDs for January 2008 **Homo Polled Homo Black**

Ratioed 105 for REA and 129 for %IMF. He is a bull that shows tons of promise in improving carcass traits in your herd. Big bodied, thick made and wide topped. Diamond Six is an outstanding prospect that should not be overlooked this breeding season

**Black**

Quality Grade	QG GPD
1 0	
Tenderness	T GPD
2 0 1	-1.098
Feed Efficiency	FE GPD

MLLC M/L ADVANTAGE  
MLLC M/L ENCORE  
MLLC M/L MISS MIDNIGHT 333C

LCBK BCC SHAQ 26D  
JOB PLD DANELL DIAMOND 18H  
JEB BCC RITA 52D

**JOB Danell Montana Infusion**



AMGV 955705

Born: 2/14/2005 Semen: \$30

CE	BW	WW	YW	M	TM	GL	CED	SC	REA	MB
108	-0.5	40	92	16	36	-2.8	107	0.3	0.07	0
.27	.38	.31	.24	.19		.31	.17	.27	.20	.18

EPDs for January 2008

Two highly used sire and dam pedigrees in M/L Advantage and Freedom to make this a confident genetic package. Low birth epd and good growth in the making.

**Black**

Quality Grade	QG GPD
1 1	
Tenderness	T GPD
Feed Efficiency	FE GPD

KCF BENNETT PREMIER Z104  
MLLC M/L ADVANTAGE  
CTR CEDAR TOP'S PERFECTA

SLC FREEDOM 178F ET  
JOB DANELL TWICE FREE 8N  
JOB DANELL O.J. 918L

**JOB Danell Montana Proud ET**



AMGV 852974

Born: 2/21/2003 Semen: \$20

CE	BW	WW	YW	M	TM	GL	CED	SC	REA	MB
100	2	47	89	14	38	-1.9	100	0.3	0.26	-0.01
.35	.60	.49	.30	.23		.31	.19	.20	.34	.27

EPDs for January 2008

**Homo Polled Homo Black**

Proven genetics behind this bulls pedigree. Balanced epd's, good phenotype and muscle.

**Black**

Quality Grade	QG GPD
Tenderness	T GPD
Feed Efficiency	FE GPD

MLLC M/L ADVANTAGE  
MLLC M/L ENCORE  
MLLC M/L MISS MIDNIGHT 333C

GKJ GRETA'S PROSPECT 616Z  
CKA WOODLAND B ELBA 411D  
CKA WOODLAND B ELBA 231B

**JRI Black N Stacked 270M78**



AMGV 805943

Born: 2/4/2002 Semen: \$20

CE	BW	WW	YW	M	TM	GL	CED	SC	REA	MB
101	1.9	43	64	4	26	-3.9	105	0	0.13	0.11
.53	.79	.71	.49	.35		.76	.35	.56	.52	.47

EPDs for January 2008

**Homo Polled Hetero Black**

Judd Ranch lost this beef packing machine. Limited Semen Supply! His birth to growth spread is phenomenal with an 84# birth, 205 day weight and 1345 on yearling weight. His fourth calf dam at Judd Ranch ranks as one of the best black polled Dam of Merit females on the ranch with perfect teat/udder quality and a big-time 106 weaning ratio on her calves.

**Black**

Quality Grade	QG GPD
0 1	
Tenderness	T GPD
2 0 1	-1.098
Feed Efficiency	FE GPD

VAA LEACHMAN NEW DAY 205B  
SLC FREEDOM 178F ET  
BB MISS 61Y

FHG FLYING H EXTRA 150D  
JRI MS PLD EXTRA STEP 270J67  
JRI MISS PLD SAVVY 270G57

**JRI Extra Exposure 285L71 ET**



AMGV 757130

Born: 2/18/2001 Semen: \$20

CE	BW	WW	YW	M	TM	GL	CED	SC	REA	MB
109	0.8	41	73	11	32	-1.5	106	1.5	0.3	-0.19
.72	.90	.85	.73	.48		.88	.50	.79	.69	.66

EPDs for January 2008

**Homo Polled Hetero Black**

If great cow families with perfect teat/udder systems are a necessity in your program this 2002 National Champion Bull is unmatched. Extra Exposure's dam, Polled Sweetie, was the '95 National Champion Female with an enormous amount of rib, volume and fleshing ability along with a beautiful mammary system. Exposure's maternal grandam, 285A5, has been acclaimed as one of the best females in the beef industry and she's also the dam of Grand Prix, the '96 National Champion Bull that ranks in the breeds top 10% for growth.

**Black**

Quality Grade	QG GPD
0 0	
Tenderness	T GPD
2 0 0	-0.698
Feed Efficiency	FE GPD

KCF BENNETT PREMIER Z104  
FHG FLYING H EXTRA 150D  
FHG MS FHG NITE LADY 50A

HHF POLLED SUMMIT 648U  
JRI MS POLLED SWEETIE 285C6  
JRI MS PLD PREFERENCE 285A

**KCF Bennett Acclaim L336**



AMGV 780564

Born: 10/4/2001 Semen: \$20

CE	BW	WW	YW	M	TM	GL	CED	SC	REA	MB
107	0.1	50	82	21	46	0.1	109	0.7	0.12	-0.06
.52	.79	.70	.56	.25		.70	.22	.55	.42	.35

EPDs for January 2008

**Hetero Polled Homo Black**

**Black**

Quality Grade	QG GPD
Tenderness	T GPD
Feed Efficiency	FE GPD

KCF BENNETT HALLMARK E208  
KCF BENNETT LANDMARK J377  
KCF MISS VIRGINIAN A261

DFW BLACKJACK B538  
KCF MISS BLACKJACK G243  
KCF MISS HORIZON C126

**KCF Bennett Ideal G182**

AMGV 565166

Born: 4/8/1997 Semen:\$ 20

CE	BW	WW	YW	M	TM	GL	CED	SC	REA	MB
106	2.3	56	90	27	55	-1.1	112	1.3	0.15	0
.66	.91	.86	.77	.65		.82	.59	.73	.83	.81

EPDs for January 2008

**Polled****Black**

Ideal is being proclaimed by many breeders across the country as one of the greatest female producing sires that there is. His daughters are extremely deep bodied and capacious, yet exhibit lots of fleshing ability and good udder quality.

**Black**

Quality Grade	QG GPD
0	0
Tenderness	T GPD
1	0
Feed Efficiency	FE GPD

KCF BENNETT TARGET A10  
KCF BENNETT ARSENAL E123  
KCF MISS PREMIER B88

KCF BENNETT VISION A302  
KCF MISS VISION E43  
KCF MISS HELAU Y167

**KCF Bennett Kingpin K403**

AMGV 746628

Born: 10/14/2000 Semen:\$ 20

CE	BW	WW	YW	M	TM	GL	CED	SC	REA	MB
108	2.3	57	100	21	50	-1.5	110	0.6	0.13	-0.01
.56	.86	.79	.65	.32		.77	.28	.64	.65	.60

EPDs for January 2008

**Homo Polled****Homo Black**

There is lots of thickness and performance in the Kingpin calves. His pedigree is full of solid performers. The Kingpin calves have been sale features at many leading purebred sales this past year. Homo polled and homo black.

**Black**

Quality Grade	QG GPD
0	0
Tenderness	T GPD
1	0
Feed Efficiency	FE GPD

KCF BENNETT ARSENAL E123  
KCF BENNETT IDEAL G182  
KCF MISS VISION E43

KCF BENNETT BONUS F95  
KCF MISS BONUS H321  
KCF MISS VIRGINIAN A261

**KIT Urlacher M28 ET**

AMGV 794369

Born: 3/25/2002 Semen:\$ 25

CE	BW	WW	YW	M	TM	GL	CED	SC	REA	MB
102	2.1	49	90	7	32	-1	107	-0.1	-0.04	-0.1
.43	.77	.68	.45	.23		.71	.19	.44	.34	.27

EPDs for January 2008

**Homo Polled****Hetero Black**

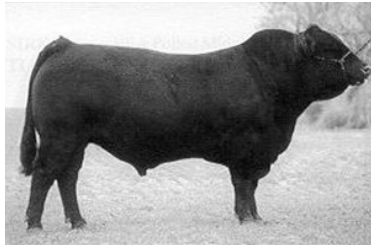
Urlacher combines the best of both the Lady Granite and Magic Muffin cow families. He has a great disposition and is siring lots of body depth and performance on a sound structure. Urlacher is big footed with bone.

**Black**

Quality Grade	QG GPD
0	0
Tenderness	T GPD
2	0
Feed Efficiency	FE GPD

SLC FREEDOM 178F ET  
BTI RED ALERT 2077K  
BTI LADY GRANITE 2001E ET

TLR COCOA 35C  
KIT 64H2 ET  
BETZ MAGIC MUFFIN F64

**KMF Fast Anchor 35H**

AMGV 622431

Born: 3/12/1998 Semen:\$ 20

CE	BW	WW	YW	M	TM	GL	CED	SC	REA	MB
101	1.9	47	90	19	43	-3.2	105	0.1	-0.16	-0.05
.54	.85	.79	.59	.50		.78	.38	.56	.62	.58

EPDs for January 2008

**Homo Polled****Homo Black**

Fast Anchor is fast to catch the attention of many breeders. He has a smooth and eye appealing pattern along with a good set of EPDs. Reports of low birth weights and calves that show a lot of early growth. A good pedigree, combined with homozygous black and polled, make this bull look attractive for the upcoming breeding season.

**Black**

Quality Grade	QG GPD
Tenderness	T GPD
Feed Efficiency	FE GPD

KCF BENNETT ANCHOR B227  
WAC PLAINES' ANCHOR 1-503EE  
WAC DAISY MAE 015C

POW MR MIDNITE 130C  
KMF MISS MIDNITE 45E  
KMF 245C

**LWHF Santana ET**

AMGV 805268

Born: 3/9/2002 Semen:\$ 20

CE	BW	WW	YW	M	TM	GL	CED	SC	REA	MB
105	2.4	55	89	11	39	1.1	104	0.6	0.02	0.05
.34	.66	.55	.41	.23		.24	.19	.22	.40	.34

EPDs for January 2008

**Double Polled****Homo Black**

Homo black/Homo polled  
Performance sire that will add muscle and substance  
Calves perform both in feed lot and show ring


**Black**

Quality Grade	QG GPD
Tenderness	T GPD
Feed Efficiency	FE GPD

JCGR BAR GT EINSTEIN  
HAD KNOCKOUT  
HAD ANNELIESE A018ET

ELK CK NIGHT TRAIN POLL 28Z  
JNS MISS NITE TRAIN 7C ET  
JNS MS TELESIS 1161K A38 ET

**MLH Black Express H34**



AMGV610761  
Born: 1/14/1998 Semen:\$ 15


CE	BW	WW	YW	M	TM	GL	CED	SC	REA	MB
99	3.4	40	66	17	37	-0.9	102	0.5	-0.04	-0.01
.36	.64	.49	.29	.26		.45	.22	.25	.23	.15

EPDs for January 2008      **Polled**      **Black**

Black	
Quality Grade	QG GPD
Tenderness	T GPD
Feed Efficiency	FE GPD

KCF BENNETT PREMIER Z104  
FHG FLYING H EXTRA 150D  
FHG MS FHG NITE LADY 50A  
KCF POLLED EXPRESS  
MLH POLLED ADVANTAGEOUS  
MLH MLH 4R MISS GOLDIE

**MLH Goldrush Visa J40**



AMGV656554  
Born: 2/4/1999 Semen:\$ 22

CE	BW	WW	YW	M	TM	GL	CED	SC	REA	MB
109	0.1	48	100	18	42	1.1	106	-0.1	0.04	0.11
.64	.90	.85	.73	.38		.86	.30	.73	.48	.42


EPDs for January 2008      **Homo Polled**      **Homo Black**

Visa combines calving ease and growth potential, not to mention maternal strength. Out of an outstanding Polled Midnight daughter that is big volumed and heavy milking. Use VISA to keep calves black, polled, and add tremendous performance, muscle dimension, and eye appeal. 5.61 for "GM" (Grid Merit EPD: expressed in dollars, carcass merit value passed to progeny) is in the top 4% of the breed. 25.06 for FM (Feedlot Merit EPD, expressed in dollars, feedlot value passed on to progeny) is in the top 1% of the breed.

Black	
Quality Grade	QG GPD
2	0
0	2
20.58	
Tenderness	T GPD
1	0
1	
-0.749	
Feed Efficiency	FE GPD

KCF BENNETT PREMIER Z104  
MLLC M/L ADVANTAGE  
CTR CEDAR TOP'S PERFECTA  
BEA POLLED MIDNIGHT  
MLH MISS GOLDRUSH F42  
OVF 114A

**MLH Strait Forward R89**



AMGV935636  
Born: 3/5/2005 Semen:\$ 25

CE	BW	WW	YW	M	TM	GL	CED	SC	REA	MB
105	1.9	55	109	16	44	0	105	0.2	0.03	0.08
.30	.51	.41	.25	.14		.43	.11	.30		

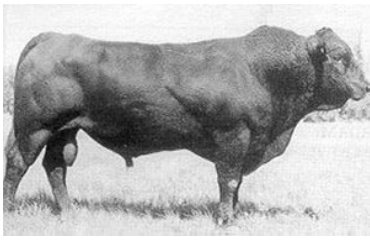
EPDs for January 2008      **Polled**      **Black**

Strait Forward is a new and exciting bull who owns excellent EPDs across the board, plus he's linebred to Goldrush Visa to provide more consistency to a breeding program. Strait Forward will add body depth, performance and style. Do you need added carcass merit? A 7 star DNA tested with phenotype.

Black	
Quality Grade	QG GPD
2	1
0	2
22.02	
Tenderness	T GPD
2	1
1	
-1.447	
Feed Efficiency	FE GPD

MLLC M/L ADVANTAGE  
MLH GOLDRUSH VISA J40  
MLH MISS GOLDRUSH F42  
MLH GOLDRUSH VISA J40  
MLH MISS GOLDRUSH M99  
MLH MISS GOLDRUSH H9

**MLLC M/L Advantage**



AMGV375086  
Born: 3/19/1993 Semen:\$ 20

CE	BW	WW	YW	M	TM	GL	CED	SC	REA	MB
109	-0.3	41	87	22	43	-2	108	0	0.11	0.19
.78	.92	.89	.80	.78		.88	.69	.77	.83	.81


EPDs for January 2008      **Homo Polled**      **Homo Black**

The trait leader specialist - calving ease, birth weight, weaning weight, yearling weight, milk, and gestation length. What more can a sire do? Homozygous black, homozygous polled, good and he will add dollars to your calves.

Black	
Quality Grade	QG GPD
Tenderness	T GPD
Feed Efficiency	FE GPD

KCF VIRGINIAN  
KCF BENNETT PREMIER Z104  
GAA GARST COW R9599  
AAA TOM HORN  
CTR CEDAR TOP'S PERFECTA  
CTR 863X

**MLLC M/L Encore**



AMGV477160  
Born: 1/26/1995 Semen:\$ 25

CE	BW	WW	YW	M	TM	GL	CED	SC	REA	MB
112	-1.5	32	73	15	31	-3.6	108	0.6	0.14	0.05
.79	.91	.87	.78	.70		.88	.61	.67	.80	.78

EPDs for January 2008      **Polled**      **Black**

Black	
Quality Grade	QG GPD
1	0
Tenderness	T GPD
1	0
1	
-0.749	
Feed Efficiency	FE GPD

KCF BENNETT PREMIER Z104  
MLLC M/L ADVANTAGE  
CTR CEDAR TOP'S PERFECTA  
BEA POLLED MIDNIGHT  
MLLC M/L MISS MIDNIGHT 333C  
BCL GINGER

**MRCO New Direction 905**

AMGV 660727

Born: 3/11/1999 Semen: \$20

CE	BW	WW	YW	M	TM	GL	CED	SC	REA	MB
110	-1	45	78	29	52	-2.7	105	1.1	0.17	-0.14
.75	.90	.85	.72	.59		.83	.53	.70	.78	.76

EPDs for January 2008 **Hetero Polled Hetero Black**

New Direction sold for \$15,000 at the 2000 NWSS. He was talked about many times after the 2000 NWSS. He has the outcross genetics for many breeding programs. New Direction has the potential to add calving ease and great phenotype to your program with outstanding growth.

**Black**

Quality Grade	QG GPD
0 1	
Tenderness	T GPD
2 0 0	-0.698
Feed Efficiency	FE GPD

GLT SENSATION'S DAY 21Y  
VAA LEACHMAN NEW DAY 205B  
VAA 023Z

FHG FLYING H CADILLAC 184C  
MRCO CADILLAC LADY 541E  
FHG FHG MS JOHN HENRY 125

**MSH Flying H MSH Full Season**

AMGV 801713

Born: 2/6/2002 Semen: \$30

CE	BW	WW	YW	M	TM	GL	CED	SC	REA	MB
101	2.8	47	83	15	39	-1.6	100	0.4	0.31	-0.11
.53	.83	.76	.61	.34		.73	.30	.57	.58	.54

EPDs for January 2008 **Polled Black**

Quality Grade	QG GPD
Tenderness	T GPD
Feed Efficiency	FE GPD

JEB POLLED GIZMO 17Z  
SPUR BERETTA 703G  
SPUR VANESSA 19E ET

FHG FLYING H EXTRA 150D  
MSH 3H  
MSH F23

**OZZ EXT Governor 3N**

AMGV 850450

Born: 1/14/2003 Semen: \$20

CE	BW	WW	YW	M	TM	GL	CED	SC	REA	MB
109	-0.6	42	88	25	46	-1.9	106	0.8	0.21	0.2
.60	.83	.74	.54	.19		.75	.15	.37	.30	.23

EPDs for January 2008 **Homo Polled Homo Black**

Add up all the traits you look for in a bull and Governor covers all the bases. Muscular, phenotypically flawless package with excellent testicular development. Breed-leading EP\_D strength for CE, BW, YW, TM, GL, GM and FM - all in the breeds top 25% or better.

Quality Grade	QG GPD
0 0	
Tenderness	T GPD
1 0 2	-1.149
Feed Efficiency	FE GPD

MLLC M/L ADVANTAGE  
FHG VVFG FLYING H EXCLUSIVE  
FHG FLYING H CADISISTER 95E

DHW MR A34033E  
OZZ CHA MICHELL 74L  
OZZ MIDNIGHT SINGER 65H

**OZZ Ideal Direction 8N**

AMGV 849194

Born: 1/18/2003 Semen: \$20

CE	BW	WW	YW	M	TM	GL	CED	SC	REA	MB
105	2.7	59	100	24	54	0.5	106	1.1	0.11	-0.06
.39	.69	.54	.26	.19		.48	.17	.18	.30	.23

EPDs for January 2008 **Homo Polled Homo Black**

This homo black and polled sire adds weight at weaning and yearling. Look at his volume and rib with the lower birth weights being reported.

Quality Grade	QG GPD
0 0	
Tenderness	T GPD
2 0 0	-0.698
Feed Efficiency	FE GPD

VAA LEACHMAN NEW DAY 205B  
MRCO NEW DIRECTION 905  
MRCO CADILLAC LADY 541E

KCF BENNETT IDEAL G182  
OZZ IDEAL SWEET 56L  
OZZ JET MILADY 150G

**PCCI Black Ice 001K**

AMGV 703416

Born: 3/2/2000 Semen: \$25

CE	BW	WW	YW	M	TM	GL	CED	SC	REA	MB
102	2.3	44	64	17	39	-4	105	1.2	0.17	-0.18
.44	.78	.72	.58	.31		.43	.32	.62	.31	.24

EPDs for January 2008 **Homo Polled Homo Black**

Black Ice has consistently produced progeny that command all the top dollars. A daughter swept the South Dakota Heifer Futurity and sold \$6,000. Numerous Black Ice sons have been Denver Pen Bull winners and sale toppers in the Annual Pearson Cattle Co. Bull Sale. Proven genetics that will inject phenotype, growth and maternal strength.

Quality Grade	QG GPD
Tenderness	T GPD
Feed Efficiency	FE GPD

JEB POLLED GIZMO 17Z  
SPUR BERETTA 703G  
SPUR VANESSA 19E ET

WAC BLACKJACK 049F  
BEA 825H  
BEA 638F

**PCCI Nitro 3161N**

CE	BW	WW	YW	M	TM	GL	CED	SC	REA	MB
105	2.5	56	89	9	37	-1.3	105	0.1	0.18	-0.11
.29	.59	.49	.32	.15		.15	.12	.39	.25	.18

EPDs for January 2008      **Polled**      **Black**

Spring 2005 New Sire Addition...2005 Reserve Division Champion IV Bull in Denver.

Member of Pearson Cattle Co. Champion Pen of 3 Bulls Denver 2004.

Nursed powerful Black Knight/Paddy daughter with a 106 weaning ratio.

Two-time Denver Champion with that Extra burst of beef, butt and guts.

AMGV 848974

Born: 4/9/2003      Semen:\$ 20

**Black**

Quality Grade	QG GPD
Tenderness	T GPD
Feed Efficiency	FE GPD

SLC FREEDOM 178F ET  
TAU T G TY 313L  
TAU MS SLEEPY 920J

MCJ RJ BLACK KNIGHT  
PCCI MS KNIGHT 6102F  
PCCI MS PADDY 976Y

**PIX MTR The Duke 653M ET**

CE	BW	WW	YW	M	TM	GL	CED	SC	REA	MB
100	2.1	41	66	11	32	-1.1	104	-0.1	0.22	-0.06
.44	.70	.55	.42	.28		.29	.25	.43	.39	.32

EPDs for January 2008      **Homo Polled**      **Homo Black**

Homozygous black, homozygous polled purebred young sire with breed leading proven genetics on both sides of the pedigree. His maternal brother Extra 150D has over 4,000 progeny recorded at the American Gelbvieh Association and his sire Atlas has over 2,600 progeny recorded. A maternal brother to Atlas a well proven sire and one of the top semen sales bulls of the Gelbvieh breed.

AMGV 809392

Born: 2/9/2002      Semen:\$ 20

**Black**

Quality Grade	QG GPD
0 0	
Tenderness	T GPD
2 0 0	-0.698
Feed Efficiency	FE GPD

TLR COCOA 35C  
RTC ATLAS 712G  
RTC 414D

GNG NIGHT HAWK 08X  
FHG MS FHG NITE LADY 50A  
FHG MR FHG BEL BOY 114Y

**PMG Pegasus 01P**

CE	BW	WW	YW	M	TM	GL	CED	SC	REA	MB
107	1.7	40	76	17	37	-0.8	107	0.1	0.23	-0.12
.49	.77	.67	.43	.20		.68	.19	.47	.33	.24

EPDs for January 2008      **Homo Polled**      **Hetero Black**

2005 Breeder's Choice Futurity Champion Bull - first semen available to the general public after Jan. 10, 2007. Topped 2005 National Gelbvieh Sale at \$33,000 and his first calf crop looks very impressive. Performance plus 960 pound 205 day weight off a superb first calf heifer and has a huge yearling scrotal circumference at 43 centimeters.

AMGV 888814

Born: 1/9/2004      Semen:\$ 25

**Black**

Quality Grade	QG GPD
0 0	
Tenderness	T GPD
2 0 1	-1.098
Feed Efficiency	FE GPD

VAA LEACHMAN NEW DAY 205B  
SLC FREEDOM 178F ET  
BB MISS 61Y

XXB DREW 565K  
XXB MISS DREW 221M  
XXB MISS DATELINE 805G

**RAG Black Hawk 90N ET**

CE	BW	WW	YW	M	TM	GL	CED	SC	REA	MB
104	3.1	50	92	12	37	-1.6	105	0.5	0.27	-0.06
.32	.56	.33	.25	.21		.25	.18	.19		

EPDs for January 2008      **Homo Polled**      **Homo Black**

Black Hawk has been successfully shown across the country and has won many division championships. Very thick just like his former National Champion Dam. He posted a 857 WW & 1437 YW with 40+ cm scrotal. Homo polled and homo black.

AMGV 878371

Born: 10/13/2003      Semen:\$ 20

**Black**

Quality Grade	QG GPD
Tenderness	T GPD
Feed Efficiency	FE GPD

CSG ELK BLACK PLD KENO 26E  
ELK CK BRONCO 411G  
ELK 411D

RKG MR WONDERFUL ET  
RAG MISS WONDERFUL  
ARO MS CARBON COPY B180P

**RAG Mr Extra Wonderful ET**

CE	BW	WW	YW	M	TM	GL	CED	SC	REA	MB
102	3.1	37	59	19	38	0.5	101	0.3	0.1	-0.12
.68	.91	.87	.73	.64		.89	.54	.68	.78	.76

EPDs for January 2008      **Homo Polled**      **Homo Black**

Extra Wonderful had a great show record - Champion Bull at the 2000 American Royal, Division Champion at the 1999 NAILE and Reserve division winner at the 2000 NWSS. A son was Senior Champion at the 2001 NWSS. The Dam of Extra Wonderful was the Grand Champion Female at the 1997 NWSS. Extra Wonderful will transmit muscle and correctness.

AMGV 650413

Born: 9/18/1998      Semen:\$ 20

**Black**

Quality Grade	QG GPD
0 0	
Tenderness	T GPD
2 0 0	-0.698
Feed Efficiency	FE GPD

KCF BENNETT PREMIER Z104  
FHG FLYING H EXTRA 150D  
FHG MS FHG NITE LADY 50A

RKG MR WONDERFUL ET  
RAG MISS WONDERFUL  
ARO MS CARBON COPY B180P

**RTC Atlas 712G**

AMGV 580562

Born: 2/20/1997 Semen: \$20

CE	BW	WW	YW	M	TM	GL	CED	SC	REA	MB
110	-1.8	48	83	17	41	-0.7	111	0	0.06	-0.01
.87	.95	.93	.86	.80		.93	.73	.85	.88	.87

EPDs for January 2008 **Homo Polled Homo Black**

Atlas is a high trait leader for calving ease and weaning weight. He adds great phenotype with muscle and volume. Atlas' dam is a great maternal cow with a super udder. Atlas will add dollars with his black attractive progeny.

**Black**

Quality Grade	QG GPD
0 0 0 2	10.58
Tenderness	T GPD
1 0 1	-0.749
Feed Efficiency	FE GPD

BEA POLLED MIDNIGHT  
TLR COCOA 35C  
TLR MISS KAISER 449Y  
  
KCF BENNETT PREMIER Z104  
RTC 414D  
RTC NUGGETTE 124A

**RTRD Rough and Ready**

AMGV 934316

Born: 2/6/2005 Semen: \$20

CE	BW	WW	YW	M	TM	GL	CED	SC	REA	MB
103	-0.8	54	94	3	30	-2.2	104	0.6	0	-0.13
.33	.54	.45	.20	.14		.44	.12	.18	.19	.17

EPDs for January 2008 **Homo Polled Homo Black**

Rough and Ready was a crowd favorite at the 2006 National Show. He showed in the same Winter Bull Calf Division as the National Champion Bull and was honored as the Reserve Winter Bull Calf Champion. Young sire with unlimited genetic potential from one super proven cow family. Look at the excellent pedigree, very correct in type, lower birth plus homo black and polled.

**Black**

Quality Grade	QG GPD
0 0	
Tenderness	T GPD
2 0 0	-0.698
Feed Efficiency	FE GPD

FHG FLYING H EXTRA 150D  
BTI EXTRA 2106K ET  
BTI LADY GRANITE 2001E ET  
  
ELK CK BRONCO 411G  
DBRG FOXI ROXI 8N  
DBRG MS FREEDOM 101L

**RTRM Headline**

AMGV 890202

Born: 2/4/2004 Semen: \$25

CE	BW	WW	YW	M	TM	GL	CED	SC	REA	MB
113	-0.6	33	65	10	27	-2.2	106	0.8	0.12	-0.17
.41	.66	.39	.20	.14		.43	.14	.18	.29	.22

EPDs for January 2008 **Homo Polled Homo Black**

2006 Houston Stock Show Grand Bull. Unmatched pedigree: Extra Exposure, 2002 National Champion Bull and Miss Kali B, 2004 Reserve National Champion Female. Headline offers you tremendous muscle, depth of rib and flawless eye appeal.

**Black**

Quality Grade	QG GPD
0 0	
Tenderness	T GPD
2 0 0	-0.698
Feed Efficiency	FE GPD

FHG FLYING H EXTRA 150D  
JRI EXTRA EXPOSURE 285L71 ET  
JRI MS POLLED SWEETIE 285C6  
  
BTI EXTRA 2106K ET  
BTI MISS KALI B 2126M  
BTI MISS KALI 2005K

**RUP Ruppel Gigolo 991L ET**

AMGV 799180

Born: 10/3/2001 Semen: \$20

CE	BW	WW	YW	M	TM	GL	CED	SC	REA	MB
102	3	45	93	25	48	2.5	101	0.2	-0.03	-0.01
.45	.83	.76	.61	.31		.70	.25	.54	.66	.62

EPDs for January 2008 **Hetero Polled Hetero Black**

Gigolo produced 3 out of 5 Denver Pen of Five Bull Champions in his first calf crop. Gigolo is homozygous for the marbling gene through GeneSTAR testing and 2 star for tenderness. Gigolo's dam, Heartbreaker, is the best female at Ruppel Cattle Co. and she's averaged \$10,016 on her calves.

**Black**

Quality Grade	QG GPD
2 0	
Tenderness	T GPD
2 0 0	-0.698
Feed Efficiency	FE GPD

WAC FULLBACK 011G  
VRT RUP LAZY TV HOTFUDDGEJ35  
VRT F091  
  
DMF INSTIGATOR  
DMF HEARTBREAKER 1747H  
DMF 476A

**SPUR Beretta 703G**

AMGV 594663

Born: 9/20/1997 Semen: \$20

CE	BW	WW	YW	M	TM	GL	CED	SC	REA	MB
101	2.4	42	70	22	43	-4.7	104	0.6	0.22	-0.32
.73	.92	.88	.77	.69		.88	.61	.76	.83	.81

EPDs for January 2008 **Homo Polled Hetero Black**

Beretta is an impressive individual having been selected the 1999 Breeders Choice Futurity Champion Bull at the Reserve Western Stock Show. His progeny are just as impressive with great structure and disposition to go with tremendous eye appeal. Beretta has made outstanding females for many years.

**Black**

Quality Grade	QG GPD
0 0	
Tenderness	T GPD
1 0 1	-0.749
Feed Efficiency	FE GPD

ATM TEJAS ROLLS ROYCH 868  
JEB POLLED GIZMO 17Z  
JEB MS. SENSATION 31X  
  
BTI BACKDRAFT 2079B ET  
SPUR VANESSA 19E ET  
ARO MS SANDHILLER Z011P

**SPUR Kings Ransome 901J ET**

CE	BW	WW	YW	M	TM	GL	CED	SC	REA	MB
101	1	49	92	21	46	-3.5	102	0.2	0.32	-0.04
.64	.87	.79	.50	.48		.75	.45	.33	.57	.52

EPDs for January 2008      **Homo Polled**      **Homo Black**

The pedigree says: good females are on the way. The lower birth to great growth is adding to this homo black and polled sires ability to produce outstanding progeny.



AMGV 651478

Born: 1/21/1999      Semen: \$25

**Black**

Quality Grade	QG GPD
0 1	
Tenderness	T GPD
1 0 1	-0.749
Feed Efficiency	FE GPD

GKT BOO BOO 155E  
GKT BUD 11G  
GKT KATIE

BTI BACKDRAFT 2079B ET  
SPUR VANESSA 19E ET  
ARO MS SANDHILLER Z011P

**TLR Cocoa 35C**

CE	BW	WW	YW	M	TM	GL	CED	SC	REA	MB
99	1	56	104	25	53	-1	107	0.9	0.09	0.1
.82	.95	.93	.86	.85		.93	.79	.85	.92	.91

EPDs for January 2008      **Hetero Polled**      **Hetero Black**

Cocoa has continued to be one of the more popular sires. The 1995 NWSS National Champion Bull has proven to have calving ease, great growth and add eye appeal to any program. This highly proven bull sires muscle, style, and correctness.



AMGV 405990

Born: 3/1/1993      Semen: \$15

**Black**

Quality Grade	QG GPD
0 0 0 2	10.58
Tenderness	T GPD
0 0 1	-0.4
Feed Efficiency	FE GPD

LNR TRAITMAKER  
BEA POLLED MIDNIGHT  
BEA 411S

LNR KAISER  
TLR MISS KAISER 449Y  
TLR MS WITCHCRAFT 37W ET

**VRT RUP Lazy TV HotFudgeJ357**

CE	BW	WW	YW	M	TM	GL	CED	SC	REA	MB
104	2.5	51	99	21	47	1.3	103	0.8	0.16	0
.53	.80	.72	.55	.36		.69	.27	.53	.64	.60

EPDs for January 2008      **Homo Polled**      **Hetero Black**

Hot Fudge progeny have been mighty impressive at the National Show in Denver. His son Gigolo was a division winner at the 2003 National Show and sold as one of the op syndicated bulls in the breed. Hot Fudge possesses excellent birth to growth stats and his cow power dam sports a 105 WW ratio, 110 YW ratio along with calving ease 95 BW ratio.



AMGV 667335

Born: 3/29/1999      Semen: \$30

**Black**

Quality Grade	QG GPD
1 0	
Tenderness	T GPD
2 0 0	-0.698
Feed Efficiency	FE GPD

KCF BENNETT ANCHOR B227  
WAC FULLBACK 011G  
WAC MS OTIS 21-038E

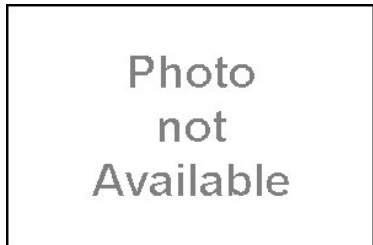
KCF BENNETT HORIZON  
VRT F091  
KRT LAZY TV D050

**WFA Flying H Atlas 101N**

CE	BW	WW	YW	M	TM	GL	CED	SC	REA	MB
104	2.7	65	109	15	48	-0.4	108	0.5	0.14	-0.01
.40	.70	.56	.38	.21		.47	.20	.44	.40	.34

EPDs for January 2008      **Homo Polled**      **Homo Black**

Homozygous black, homozygous polled purebred. Awesome birth to growth spread - 85 birth, 864 weaning weight with a 1,421 yearling weight. Calving ease reports have been excellent. 2 Stars Tenderness. Line-bred calving ease genetics with unbelievable growth.



AMGV 866825

Born: 1/16/2003      Semen: \$25

**Black**

Quality Grade	QG GPD
0 0	
Tenderness	T GPD
2 0 0	-0.698
Feed Efficiency	FE GPD

TLR COCOA 35C  
RTC ATLAS 712G  
RTC 414D

KCF BENNETT BONUS F95  
WFA MISS BONUS 82L  
WFA FARIS MISS ROSEBUD 75J

**XXB Big N' Rich 911P ET**

CE	BW	WW	YW	M	TM	GL	CED	SC	REA	MB
104	1.8	47	84	23	47	-1.3	104	0.6	0.09	-0.06
.39	.71	.61	.21	.16		.58	.13	.18		

EPDs for January 2008      **Polled**      **Black**

2006 Breeder's Choice Bull Futurity Champion. 2006 NWSS Reserve National Champion



AMGV 929387

Born: 12/24/2004      Semen: \$15

**Black**

Quality Grade	QG GPD
0 1	
Tenderness	T GPD
2 0 0	-0.698
Feed Efficiency	FE GPD

MRCO NEW DIRECTION 905  
XXB TITUS 880K  
DFW MISS ECHO J880

EVE MR BEAU JANGLES 308B  
EGL G565  
EGL D594

**XXB Drew 565K**

AMGV 699882

Born: 1/7/2000 Semen:\$ 20

CE	BW	WW	YW	M	TM	GL	CED	SC	REA	MB
106	-0.3	36	69	24	42	-1.3	106	1.4	0.09	0.07
.77	.93	.89	.79	.64		.90	.56	.76	.83	.82

EPDs for January 2008 **Homo Polled Homo Black**

This homozygous black, homozygous polled 2001 Breeder's Choice Futurity Champion Bull is proving to be one of the best calving ease sires in the breed. Drew's dam is truly one of the black polled power females in the breed with a 118 weaning weight ratio, 117 yearling weight ratio and excellent teat/udder quality. The acceptance for Drew progeny across the breed has been sensational and his sons perform fantastic on gain test.

**Black**

Quality Grade	QG GPD
0 0 0 1	5.29
Tenderness	T GPD
2 0 0	-0.698
Feed Efficiency	FE GPD

FHG FLYING H CADILLAC 184C  
GKT BOO BOO 155E  
CCD X55

EVE MR BEAU JANGLES 308B  
EGL G565  
EGL D594

**XXB Titanium 921N**

AMGV 838749

Born: 1/9/2003 Semen:\$ 25

CE	BW	WW	YW	M	TM	GL	CED	SC	REA	MB
105	0.6	35	74	21	39	-0.4	106	0.4	0.17	-0.05
.57	.82	.74	.57	.24		.77	.20	.53	.33	.24

EPDs for January 2008 **Double Polled Homo Black**

2004 Breeder's Choice Futurity Champion Bull. Powerful cow family with grandam EGL G565 producing the 2006 Breeders Choice Futurity Champion Bull/2006 Reserve National Champion Bull, Big N' Rich, and the 2007 National Champion Balancer Bull, Ludacris.

**Black**

Quality Grade	QG GPD
0 1	
Tenderness	T GPD
2 0 0	-0.698
Feed Efficiency	FE GPD

MRCO NEW DIRECTION 905  
XXB TITUS 880K  
DFW MISS ECHO J880

GKT BUD 11G  
XXB MISS MILLENNIUM 921J  
EGL G565

**XXB Titus 880K**

AMGV 745160

Born: 12/28/2000 Semen:\$ 20

CE	BW	WW	YW	M	TM	GL	CED	SC	REA	MB
114	-2.7	32	63	26	42	-2.7	110	0.2	0.12	-0.17
.60	.84	.76	.53	.32		.77	.26	.47	.47	.41

EPDs for January 2008 **Hetero Polled Hetero Black**

Titus is the sire of the 2004 Breeder's Choice Futurity Champion as well as the Futurity Runner-Up. He's stamping his progeny with a great profile on an extra sound structure. Note the good calving ease numbers on Titus. Look for more outstanding progeny to appear out of this outstanding sire of champions.

**Black**

Quality Grade	QG GPD
0 1	
Tenderness	T GPD
2 0 0	-0.698
Feed Efficiency	FE GPD

VAA LEACHMAN NEW DAY 205B  
MRCO NEW DIRECTION 905  
MRCO CADILLAC LADY 541E

CTR ECHO 575E  
DFW MISS ECHO J880  
DFW TEASER

**BTBR Mr Black Cross 3002N ET**

AMGV 848137

Born: 2/8/2003 Semen:\$ 18

CE	BW	WW	YW	M	TM	GL	CED	SC	REA	MB
104	-0.8	49	107	18	43	-2.1	103	0.1	-0.06	0.1
.41	.80	.68	.52	.14		.53	.17	.38	.40	.33

EPDs for January 2008 **Hetero Polled Homo Black**

Large spread birth to growth. A balancer with good from both worlds. 1/2 interest sold for \$21,000 through the Seedstock Plus Program.

**Balancer**

Quality Grade	QG GPD
0 0	
Tenderness	T GPD
2 0 0	-0.698
Feed Efficiency	FE GPD

B/R NEW DESIGN 036  
BON VIEW NEW DESIGN 1407  
BON VIEW PRIDE 664

ELK CK BRONCO 411G  
BTBR MS DOLLY 1211L  
BTBR MS BLACK CROSS 4116D

**Buck 's Carolina Rock'n 251L**

AMGV 794476

Born: 11/25/2001 Semen:\$ 18

CE	BW	WW	YW	M	TM	GL	CED	SC	REA	MB
104	-3.6	32	66	16	32	-3.4	105	0.6	0.5	0.11
.40	.73	.60	.35	.17		.59	.12	.35	.49	.46

EPDs for January 2008 **Homo Polled Homo Black**

Look at the low birth EPD and a pedigree for great females.

**Balancer**

Quality Grade	QG GPD
Tenderness	T GPD
Feed Efficiency	FE GPD

PARAMONT AMBUSH 2172  
ROCKN D AMBUSH 1531  
MS BLACKCAP BAND OF R D 13

CTR ECHO 575E  
JBOB 2417J ET  
JBOB MISS 92C

**CTR Benchmark 5509R**

CE	BW	WW	YW	M	TM	GL	CED	SC	REA	MB
1.1	40	80	23	43	-0.5			0.18	0.01	
.32	.24	.16	.05							

EPDs for January 2008      **Polled**      **Homo Black**

His first progeny are exciting as they are right in kind.

Photo  
not  
Available

AMGV971247  
Born: 3/27/2005    Semen: \$ 15

Balancer	
Quality Grade	QG GPD
Tenderness	T GPD
Feed Efficiency	FE GPD

C A FUTURE DIRECTION 5321  
STEVENSON BENCHMARK N190  
STEVENSON ELGA L706

CTR ECHO 093K  
LAMM NINE OF DIAMONDS 331N  
XXB MISS BEAU DILLON 031K

**CTR Clipper 4818P**

CE	BW	WW	YW	M	TM	GL	CED	SC	REA	MB
0.3	41	87	22	43	-1.6			0.6	0.05	0.1
.35	.27	.19	.09			.01				

EPDs for January 2008      **Polled**      **Black**

Growth, fleshing ability and a stack of positive carcass in his pedigree.

Photo  
not  
Available

AMGV920982  
Born: 4/30/2004    Semen: \$ 15

Balancer	
Quality Grade	QG GPD
Tenderness	T GPD
Feed Efficiency	FE GPD

ALBERDA TRAVELER 416  
J D ALBERDA CLIPPER 019  
J D MISSY CHLOE 8422

DBC BLACK DIAMOND 96C  
CTR 9009J  
CTR 6102F

**CTR Kingpin 4741P**

CE	BW	WW	YW	M	TM	GL	CED	SC	REA	MB
109	-0.1	39	81	17	37	-1.4		0.2		
.20	.33	.27	.22	.11		.15		.14		

EPDs for January 2008      **Polled**      **Black**

He supports a high level of muscle and depth with correctness.

Photo  
not  
Available

AMGV921164  
Born: 4/8/2004    Semen: \$ 15

Balancer	
Quality Grade	QG GPD
Tenderness	T GPD
Feed Efficiency	FE GPD

KCF BENNETT IDEAL G182  
KCF BENNETT KINGPIN K403  
KCF MISS BONUS H321

C T R RIGHT TIME 4246  
C T R BLACK CONTENT 0957  
C T R BLACK CONTENT 3246

**CTR Marbling 2401M**

CE	BW	WW	YW	M	TM	GL	CED	SC	REA	MB
109	-3.1	46	101	22	45	-1.3	102	0.6	0.09	0.12
.36	.69	.56	.26	.17		.20	.15	.10		

EPDs for January 2008      **Polled**      **Black**

Low birth coupled with scale crushing weaning and yearling weights. He sires long, loose, free moving big rough country covering bulls and females that are moderate at first calf with incredible udders. 2401 stems from a Dam of distinction cow family that never misses. Use this bull if balanced traits from birth to yearling are what you need.

Photo  
not  
Available

AMGV825867  
Born: 3/1/2002    Semen: \$ 15

Balancer	
Quality Grade	QG GPD
Tenderness	T GPD
Feed Efficiency	FE GPD

D H D TRAVELER 6807  
S S TRAVELER 6807 T510  
S S MISS HI SPADE A114

JBOB CAROLINA CPR  
CTR 012K  
CTR CEDAR TOP'S 3019C

**CTR Tomahawk 3715N**

CE	BW	WW	YW	M	TM	GL	CED	SC	REA	MB
103	1	40	83	22	42	-1	99	0.7	0.31	0.18
.32	.67	.48	.37	.16		.19	.13	.25		

EPDs for January 2008      **Polled**      **Red**

One of the top red genetic packages from great parent.

Photo  
not  
Available

AMGV887864  
Born: 3/27/2003    Semen: \$ 20

Balancer	
Quality Grade	QG GPD
Tenderness	T GPD
Feed Efficiency	FE GPD

VC BUF CRK CHF 824-1658  
BUF BFCK CHEROKEE CNYN 491  
MRM MRM 1431 8611 9109

DBC BLACK DIAMOND 96C  
CTR G 527E  
VHG T124

**CTR Traveler 0907K**

AMGV 721347

Born: 3/10/2000 Semen: \$20

CE	BW	WW	YW	M	TM	GL	CED	SC	REA	MB
93	2.4	48	89	8	32	-1.3	99	1.3	0.05	-0.04
.51	.87	.80	.62	.32		.65	.30	.41	.36	.28

EPDs for January 2008

Polled

Black

Transmits, muscling, capacity, fleshing ability at the highest level. Nicknamed "Muscle" for his powerful phenotype. Simply, the most powerful Gelbvieh and/or Balancer bull. Words are not sufficient to describe the cattle. "Muscle" will be around for years to come and a household name among commercial producers wanting Balancers.

**Balancer**

Quality Grade	QG GPD
Tenderness	T GPD
Feed Efficiency	FE GPD

D H D TRAVELER 6807  
G D A R TRAVELER 011  
G D A R PRIMROSE LADY 8209

MCJ BLACK HUSKER  
KNS CTR 414D  
JNE MISS JAY'S BLACK JACKIE

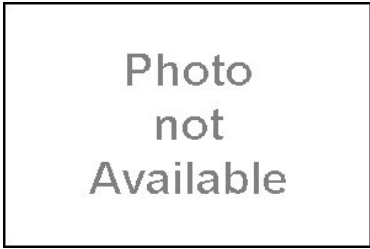
**CTR Traveler 3718N**

Photo not Available

AMGV 887873

Born: 3/28/2003 Semen: \$15

CE	BW	WW	YW	M	TM	GL	CED	SC	REA	MB
98	1.1	40	78	11	31	-1.1	100	1	0.03	-0.02
.21	.36	.28	.21	.12		.21	.11	.10		

EPDs for January 2008

Polled

Black

A planned mating that looks awesome.

**Balancer**

Quality Grade	QG GPD
Tenderness	T GPD
Feed Efficiency	FE GPD

G D A R TRAVELER 011  
CTR TRAVELER 0907K  
KNS CTR 414D

CTRG RED DOG 50E  
CTR 8148H

**DLW Stout 695S ET**

AMGV 996570

Born: 2/5/2006 Semen: \$15

CE	BW	WW	YW	M	TM	GL	CED	SC	REA	MB
104	0.9	43	88	23	45	-1.1	103	0.1	0.22	0
.01	.01	.01	.01	.01		.01	.01		.17	.15

EPDs for January 2008

Polled

Black

Igenity tested 6 for tenderness. Stout, muscular, correct and deep.

**Balancer**

Quality Grade	QG GPD
Tenderness	T GPD
Feed Efficiency	FE GPD

LEACHMAN RIGHT TIME  
HYLINE RIGHT TIME 338  
HYLINE PRIDE 265

SKS HIGHLAND HERO 511E  
DLW MS HERO 8862H  
DLW MISS CAMI 01F

**EGL Tenderloin N407**

AMGV 855307

Born: 2/25/2003 Semen: \$20

CE	BW	WW	YW	M	TM	GL	CED	SC	REA	MB
111	-3.7	47	103	20	44	-2.3	105	0.5	0.14	0.2
.48	.75	.63	.43	.12		.58	.09	.35	.43	.39

EPDs for January 2008

Homo Polled

Homo Black

Tenderloin's individual low birth to growth spread was phenomenal. One of the top IMF bulls in the Eagle Pass Ranch's '04 Bull Sale with a 119 IMF ratio and check-out his impressive GeneSTAR DNA for Tenderness.

**Balancer**

Quality Grade	QG GPD
0 0 2 1	15.69
Tenderness	T GPD
2 1 1	-1.447
Feed Efficiency	FE GPD

BON VIEW NEW DESIGN 1407  
EGL TARGET 1148  
EGL 9420

TLR COCOA 35C  
EGL L280  
EGL H228

**GGGE 3G Smoke N' Mirrors**

AMGV 986778

Born: 2/5/2006 Semen: \$30

CE	BW	WW	YW	M	TM	GL	CED	SC	REA	MB
0.2	37	84	18	37		-0.9		0.2	0.08	0.04
.33	.22	.14	.07			.01				

EPDs for January 2008

Homo Polled

Homo Black

Smoke N' Mirrors brings a new dimension to the Balancer breed with his unsurpassed depth of rib, volume and capacity in one flawless package. He's wide-based, sound-footed with excellent testicular development. 2006 American Royal Reserve Grand Balancer Bull.

**Balancer**

Quality Grade	QG GPD
0 0	
Tenderness	T GPD
2 0 2	-1.498
Feed Efficiency	FE GPD

SITZ TRAVELER 8180  
S A V 8180 TRAVELER 004  
BOYD FOREVER LADY 8003

O C C ANCHOR 771A  
GGGR 3G COWGIRL 351N  
GGGR 3G COOKIE 421D

**GKG Harley**

AMGV 937227

Born: 12/18/2004 Semen:\$ 30

CE	BW	WW	YW	M	TM	GL	CED	SC	REA	MB
103	0.4	36	73	20	38	-2.6	105	0.4		
.18	.35	.22	.09	.09		.14	.07	.06		

EPDs for January 2008

Harley is the most exciting young herd bull that's ever graced the pastures at Golden Image cattle. He gained 5 pound per day from weaning to yearling and turned in a 1500 adj. YW on a 6.3 frame. His scan data revealed a 19 square inch ribeye. Harley offers multiple mating options to produce black Purebred and Balancer calves!

**Balancer**

Quality Grade	QG GPD
Tenderness	T GPD
Feed Efficiency	FE GPD

SLC FREEDOM 178F ET  
GKG MR FREEDOM 206M ET  
GKG MISS B FORCE 708G

NORTHERN IMPROVEMENT 448  
GKG MS NI 312N  
GKG MS BLACK FORCE 147L ET

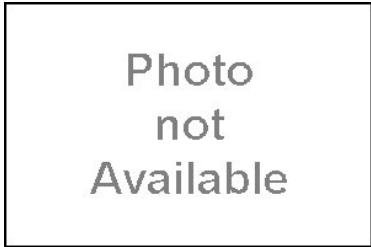
**JBOB Apache Warrior GC ET**

Photo not Available

AMGV 806965

Born: 1/16/2002 Semen:\$ 20

CE	BW	WW	YW	M	TM	GL	CED	SC	REA	MB
111	-3.7	24	57	22	34	-2.4	107	0.3	0.41	-0.02
.31	.62	.25	.14	.11		.14	.10	1	.20	.18

EPDs for January 2008

Polled

Black

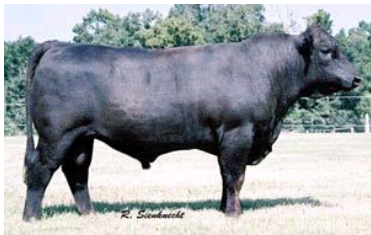
You can build superior bulls and females here. With proven Angus genetics and the famous Echo makes this a consistent package of attractive progeny.

**Balancer**

Quality Grade	QG GPD
Tenderness	T GPD
Feed Efficiency	FE GPD

PAPA OPTIMA 9818  
PAPA FORTE 1921  
PAPA ENVIOUS BLACKBIRD 883

CTR ECHO 575E  
JBOB 2417J ET  
JBOB MISS 92C

**JBOB Carolina 5003N ET**

AMGV 880418

Born: 8/22/2003 Semen:\$ 20

CE	BW	WW	YW	M	TM	GL	CED	SC	REA	MB
96	2.1	57	105	24	53	-2.2	103	0.8	0.42	-0.01
.33	.56	.40	.19	.14		.13	.11	.11	.28	.21

EPDs for January 2008

Homo Polled

Homo Black

Carolina 5003N is a great Balancer bull sired by the great Bushwacker bull who adds depth, fleshing ability and good carcass merit to his progeny. Bushwacker daughters are some of the best females around. The mating with this great JBOB Echo daughter produced a great one. Bushwacker with Echo puts the top genetics together making for great females less frame and a very attractive package.

**Balancer**

Quality Grade	QG GPD
0	0
Tenderness	T GPD
2	0
	-0.698
Feed Efficiency	FE GPD

PARAMONT AMBUSH 2172  
B C C BUSHWACKER 41-93  
R C ANITA T BANDO 918903

CTR ECHO 575E  
JBOB 3298K  
JBOB MISS 92C

**JBOB Carolina 5423P ET**

AMGV 925186

Born: 8/18/2004 Semen:\$ 20

CE	BW	WW	YW	M	TM	GL	CED	SC	REA	MB
102	-2	38	81	23	42	-1.7	103	0.6	0.34	-0.05
.36	.61	.48	.24	.17		.40	.14	.11	.22	.20

EPDs for January 2008

Homo Polled

Homo Black

The complete package young Balancer sire that sold as the 2nd high selling bull in the Jbob Farms 2005 Bull Sale. His incredible dam, Jbob 3298K, topped the Jbob Farms Complete Dispersal at \$14,500. Awesome low birth to growth individual that scanned a 15.4 inch yearling ribeye and ratioed 123 on yearling IMF.

Leachman Right Time with Echo writes another win win to produce the keeping kind.

**Balancer**

Quality Grade	QG GPD
1	0
Tenderness	T GPD
2	1
	-1.447
Feed Efficiency	FE GPD

N BAR EMULATION EXT  
LEACHMAN RIGHT TIME  
LEACHMAN ERICA 0025

CTR ECHO 575E  
JBOB 3298K  
JBOB MISS 92C

**JBOB Carolina Balancer 2477J**

AMGV 684533

Born: 10/10/1999 Semen:\$ 12

CE	BW	WW	YW	M	TM	GL	CED	SC	REA	MB
104	-1.8	31	70	20	36	-2	102	0.4	0.2	-0.06
.60	.80	.73	.54	.41		.72	.37	.47	.63	.59

EPDs for January 2008

Homo Polled

Homo Black

Balancer genetics featuring the Angus and Gelbvieh breeds elite sire lines of EXT and Extra 150D.

EXT is one of the Angus breed's most unique curve benders ranking #1 for registrations in '96, '97, '98, '99.

Extra 150D is among the Gelbvieh breeds most widely used sires and he is unmatched in calving ease.

Carolina Balancer offers you a simple and powerful way to maintain hybrid vigor and the proper blend of British and Continental genetics in your cow herd without a complicated crossbreeding system.

**Balancer**

Quality Grade	QG GPD
Tenderness	T GPD
Feed Efficiency	FE GPD

KCF BENNETT PREMIER Z104  
FHG FLYING H EXTRA 150D  
FHG MS FHG NITE LADY 50A

N BAR EMULATION EXT  
J BOB 1467  
N C S U PRINCESS 761

**JBOB J-Bob 4665M ET**

AMGV 840675

Born: 11/28/2002 Semen:\$ 20

CE	BW	WW	YW	M	TM	GL	CED	SC	REA	MB
99	0.9	44	88	22	44	-1.4	102	0.7	0.09	-0.1
.39	.72	.61	.32	.18		.48	.15	.12	.48	.44

EPDs for January 2008 **Homo Polled Homo Black**

4665M is an awesome 1/2 blood Balancer out of Angus maternal phenom, Right Time, who's one of the best udder and flesh improvers in the breed. Expect the best of both worlds when you sample 4665M this year.

**Balancer**

Quality Grade	QG GPD
0 0	
Tenderness	T GPD
0 1 1	-0.749
Feed Efficiency	FE GPD

N BAR EMULATION EXT  
LEACHMAN RIGHT TIME  
LEACHMAN ERICA 0025

CTR ECHO 575E  
JBOB 2409J ET  
JBOB MISS 92C

**JRI Complete Package 27S2**

AMGV 989062

Born: 1/25/2006 Semen:\$ 22

CE	BW	WW	YW	M	TM	GL	CED	SC	REA	MB
-2.7	42	90	23	44	-1.4			0.15	-0.01	
.35	.29	.22	.08							

EPDs for January 2008 **Multiple Polled Hetero Black**

JRI Complete Package is a low birth, super growth bull out of a first calf Free Agent daughter. He posted a 76 BW, 792 WW, 1,480 YW, 39.2 cm yearling scrotal, 136 gain test ratio and 15.8 square inch yearling ribeye. This young sire shows promise for calving ease, good growth and eye appeal with correctness.

**Balancer**

Quality Grade	QG GPD
Tenderness	T GPD
Feed Efficiency	FE GPD

C A FUTURE DIRECTION 5321  
MORGANS DIRECTION 111 9901  
MCC BARBIE 9901 5205 797

JRI PLD FREE AGENT 125J3  
JRI MS SPECIAL AGENT 27P5  
JRI 27Z4

**JRI Curvebender 285S22**

AMGV 989086

Born: 1/29/2006 Semen:\$ 20

CE	BW	WW	YW	M	TM	GL	CED	SC	REA	MB
-0.9	48	98	21	45	-1.1			0.28	-0.05	
.33	.27	.21	.08							

EPDs for January 2008 **Multiple Polled Hetero Black**

This exciting young Balancer bull excels in all the Judd Ranch "Complete Package" traits. Eighty-four pound calving ease birth weight. Scalebusting 799 pound 205 day weight off a first calf heifer. Scalesmashing 1,473 pound yearling weight. His 5.27 pound ADG ranked him third over-all of the entire 2006 spring calf crop. Curvebender is well endowed in the scrotal department with his 39 centimeter yearling measurement and he also ranked as one of the top yearling ribeye bulls at 15.1 square inches. His first calf dam has future donor female written all over her and her dam, grandam, great grandam and great, great grandam are all current leading

**Balancer**

Quality Grade	QG GPD
Tenderness	T GPD
Feed Efficiency	FE GPD

C A FUTURE DIRECTION 5321  
MORGANS DIRECTION 111 9901  
MCC BARBIE 9901 5205 797

JRI EXTRA EXPOSURE 285L71  
JRI MS SUGAR SWEET 285P992  
JRI MS SHOW N TELL 285L89 ET

**JRI Profit Agent 46N**

AMGV 852366

Born: 3/6/2003 Semen:\$ 20

CE	BW	WW	YW	M	TM	GL	CED	SC	REA	MB
117	-5.5	32	79	15	31	-1.8	107	1.1	-0.17	-0.11
.53	.72	.62	.47	.18		.65	.16	.49	.32	.23

EPDs for January 2008 **Homo Polled Diluter Free**

This homozygous polled, diluter free Balancer bull has really developed into one powerful individual. Profit Agent ranks among the breed leaders for low birth and his sons and daughters feature unbelievable depth of rib and fleshing ease.

**Balancer**

Quality Grade	QG GPD
0 0	
Tenderness	T GPD
2 0 1	-1.098
Feed Efficiency	FE GPD

SLC FREEDOM 178F ET  
JRI PLD FREE AGENT 125J3  
JRI MS PLD GRAND PRIX 125G3

CPH GLACIER LOGAN 210  
LACY LACY MISS LOGAN 46G  
LACY LACY ANNA HW 16E

**KCF Bennett K503 ET**

AMGV 761487

Born: 10/20/2000 Semen:\$ 20

CE	BW	WW	YW	M	TM	GL	CED	SC	REA	MB
114	-4.3	28	72	22	36	-1.2	106	0.1	-0.01	0.08
.71	.88	.81	.71	.31		.82	.20	.71	.60	.55

EPDs for January 2008 **Homo Polled Homo Black**

A great 1/2 blood Balancer out of legendary Angus carcass sire, Precision 1680. The maternal strength is stacked on the bottom side of this pedigree. Look for K503 to sire some great calves with excellent carcass merit.

**Balancer**

Quality Grade	QG GPD
0 0	
Tenderness	T GPD
1 0 2	-1.149
Feed Efficiency	FE GPD

TEHAMA BANDO 155  
G A R PRECISION 1680  
9J9 G A R 856

KCF BENNETT HALLMARK E208  
KCF MISS HALLMARK G264  
KCF MISS TARGET E239

**KCF Bennett N473**

AMGV 890037

Born: 11/3/2003 Semen:\$ 20

CE	BW	WW	YW	M	TM	GL	CED	SC	REA	MB
108	-0.2	39	85	24	44	-0.9	106	0.2	0.16	0.07
.35	.76	.65	.49	.11		.68	.08	.48	.31	.22

EPDs for January 2008 **Multiple Polled Homo Black**

Bennett N473 is one of the most exciting young bulls ever raised at Knoll Crest Farms. His individual stats for modest birth/growth are incredible and he posted a 5.17 #ADG (130 gain test ratio) If you use curve bending genetics N473 will work. He transmits depth, volume and clean sheath in an attractive package.

**Balancer**

Quality Grade	QG GPD
0 0	
Tenderness	T GPD
2 1 1	-1.447
Feed Efficiency	FE GPD

SITZ ALLIANCE 6595  
K C F BENNETT TOTAL  
EXT OF CONANGA 6790

KCF BENNETT E185  
KCF MISS HIGAIN J302  
KCF MISS BLACKJACK G243

**MCFG MCF Bruce Almighty 35P**

AMGV 899675

Born: 1/8/2004 Semen:\$ 20

CE	BW	WW	YW	M	TM	GL	CED	SC	REA	MB
103	-0.2	44	89	21	43	-1.6	103	0.5	0.39	-0.04
.34	.58	.48	.33	.16		.27	.14	.18	.32	.25

EPDs for January 2008 **Homo Polled Homo Black**

2004 Popular NAILE Grand Champion, Billings, MT. Ten bull calves on 2007 Midland test are all above the group average! The only true outcross HP/HB Balancer bull on the market with proven sire and dam credentials. 77 lb is the average birthweight on 1st calf heifers.

**Balancer**

Quality Grade	QG GPD
Tenderness	T GPD
Feed Efficiency	FE GPD

R D R 1531 AMBUSH 1807  
VRT LAZY TV BEETHOVEN K278  
VRT LAZY TV H406

GKT BUD 11G  
MCFG 41K ET  
CTRG CEDAR TOP'S TIFFANY

**McMinnville's Anchor (CMFS 628)**

AMGV 971704

Born: 1/30/2006 Semen:\$ 18

CE	BW	WW	YW	M	TM	GL	CED	SC	REA	MB
105	0.1	44	85	18	40	-1.8	103	0.5	0.22	-0.06
.01	.34	.29	.21	.12		.01	.01	1	.20	.18

EPDs for January 2008 **Polled Black****Balancer**

Quality Grade	QG GPD
Tenderness	T GPD
Feed Efficiency	FE GPD

O C C ANCHOR 771A  
PARTISOVER ANCHOR 948  
PARTISOVER BURGESS 521

CTR ECHO 575E  
JBOB 2408J ET  
JBOB MISS 92C

**MLH F2 Trademark P3**

AMGV 891351

Born: 1/18/2004 Semen:\$ 20

CE	BW	WW	YW	M	TM	GL	CED	SC	REA	MB
107	-1	48	97	17	41	-3.4	104	0.4	0.26	0.01
.42	.64	.53	.32	.14		.56	.12	.33	.30	.22

EPDs for January 2008 **Homo Polled Homo Black**

Trademark P3 topped the Goldrush Genetics 2004 Sale. Awesome birth (71 pounds) to growth spread (891# 205 day weight) - off a magnificent first calf Goldrush Visa daughter. Breed-leading EPD strength for calving ease, growth, maternal and carcass merit.

**Balancer**

Quality Grade	QG GPD
1 1	
Tenderness	T GPD
1 0 1	-0.749
Feed Efficiency	FE GPD

FHG FLYING H EXTRA 150D  
JBOB CAROLINA BALANCER 2477  
J BOB 1467

MLH GOLDRUSH VISA J40  
MLH MISS GOLDRUSH M76  
MISS GOLDRUSH G103

**MLH Goldrush Designer Genes**

AMGV 982492

Born: 2/1/2006 Semen:\$ 22

CE	BW	WW	YW	M	TM	GL	CED	SC	REA	MB
	1.9	47	99	18	42	-0.3				
	.33	.24	.10	.07		1				

EPDs for January 2008 **Multiple Polled Homo Black**

A Maternal Brother to Straight Forward and your clear choice for semen on a Balancer bull. There is added carcass merit here to add to good epd's, homo black and a good pedigree.

**Balancer**

Quality Grade	QG GPD
0 1 0 1	6.73
Tenderness	T GPD
2 2 2	-2.196
Feed Efficiency	FE GPD

G T EXPO  
ISU IMAGING Q 9111  
SUMMITCREST PRIDE 351F

MLH GOLDRUSH VISA J40  
MLH MISS GOLDRUSH M99  
MLH MISS GOLDRUSH H9

**MLH Goldrush Standard**



<b>CE</b>	<b>BW</b>	<b>WW</b>	<b>YW</b>	<b>M</b>	<b>TM</b>	<b>GL</b>	<b>CED</b>	<b>SC</b>	<b>REA</b>	<b>MB</b>
-3.2	39	86	17	37	-1		0.14	0.07		
.35	.28	.15	.09							

EPDs for January 2008 **Homo Polled** **Homo Black**

Five star DNA... homozygous for 2 of the 3 tenderness genes. Incredible individual birth to growth spread... 73# birth weight/834# 205 day weight off first calf heifer. Cowman balanced EPD strength featuring top 4% low birth, top 20% weaning weight, top 10% yearling weight, top 30% total maternal and top 5% feedlot merit. Beef plus genetics featuring proven carcass merit on both sides of the pedigree.

AMGV982519

Born: 1/17/2006 **Semen:\$22**

**Balancer**

<b>GeneStar</b>	<b>Quality Grade</b>	<b>QG GPD</b>
	0 0 0 2	10.58
	<b>Tenderness</b>	<b>T GPD</b>
	2 1 2	-1.847
	<b>Feed Efficiency</b>	<b>FE GPD</b>

G A R PRECISION 1680  
G A R US PREMIUM BEEF  
G A R EXT 2928

RTC ATLAS 712G  
MLH MISS GOLDRUSH P11  
MLH MISS GOLDRUSH M75

**MLH Wrangler R21**



<b>CE</b>	<b>BW</b>	<b>WW</b>	<b>YW</b>	<b>M</b>	<b>TM</b>	<b>GL</b>	<b>CED</b>	<b>SC</b>	<b>REA</b>	<b>MB</b>
106	-0.7	36	86	19	37	0.2	103	0	0	0.1
.30	.53	.36	.23	.12		.38	.08	.18		

EPDs for January 2008 **Homo Polled** **Homo Black**

Top selling bull in the '05 Goldrush Genetics Sale who excels in phenotype and genotype. Wrangler's carcass plus pedigree features the Angus breed's all-time great carcass sire, GAR Precision 1680, on the top side and the marbling breed leader, Goldrush Visa J40 on the maternal side. Wrangler should really increase your carcass dividends and note his super blend of calving ease, growth and maternal strength.

AMGV935630

Born: 1/30/2005 **Semen:\$20**

**Balancer**

<b>GeneStar</b>	<b>Quality Grade</b>	<b>QG GPD</b>
	0 0	
	<b>Tenderness</b>	<b>T GPD</b>
	2 0 1	-1.098
	<b>Feed Efficiency</b>	<b>FE GPD</b>

G A R PRECISION 1680  
KCF BENNETT K503 ET  
KCF MISS HALLMARK G264

MLH GOLDRUSH VISA J40  
MLH MISS GOLDRUSH M80  
MISS GOLDRUSH STOCKMAN J

**TAU Mr Krugerrand 70M 130P**



<b>CE</b>	<b>BW</b>	<b>WW</b>	<b>YW</b>	<b>M</b>	<b>TM</b>	<b>GL</b>	<b>CED</b>	<b>SC</b>	<b>REA</b>	<b>MB</b>
108	-0.6	54	104	18	45	-0.7	105	0.4	0	0.04
.27	.65	.54	.22	.12		.09	.09	.07	.26	.18

EPDs for January 2008 **Homo Polled** **Homo Black**

Homozygous black, homozygous polled meat machine with flawless phenotype. Krugerrand is really adding mass, depth and soundness of structure to his progeny. Note Krugerrand's excellent widespread low birth to superb growth ratios in his progeny report. Powerful cow family with Krugerrands dam sporting a calving ease 95 BW ratio, 108 WW ratio, and a 110 YW ratio.

AMGV904079

Born: 2/20/2004 **Semen:\$20**

**Balancer**

<b>GeneStar</b>	<b>Quality Grade</b>	<b>QG GPD</b>
	<b>Tenderness</b>	<b>T GPD</b>
	<b>Feed Efficiency</b>	<b>FE GPD</b>

KRUGERRAND OF DONAMERE  
TAU KRUGERRAND 70M  
T G A PROMPTER 6807 557E

TLR COCOA 35C  
TAU MS COCO 052KA 437D  
TAU 437D

**XXB Midnight Cowboy 219N**



<b>CE</b>	<b>BW</b>	<b>WW</b>	<b>YW</b>	<b>M</b>	<b>TM</b>	<b>GL</b>	<b>CED</b>	<b>SC</b>	<b>REA</b>	<b>MB</b>
93	3.3	32	65	20	36	-1.1	0.3	-0.1	0	
.29	.65	.50	.31	.09		.42		.16	.38	.32

EPDs for January 2008 **Homo Polled** **Hetero Black**

2005 National Champion Balancer Bull. Homozygous polled by DNA test. Carcass plus B/R Midland son out of XXB Drew 565K's maternal sister. Tremendous volume, sound structured individual with super balance.

AMGV884080

Born: 12/25/2003 **Semen:\$20**

**Balancer**

<b>GeneStar</b>	<b>Quality Grade</b>	<b>QG GPD</b>
	<b>Tenderness</b>	<b>T GPD</b>
	<b>Feed Efficiency</b>	<b>FE GPD</b>

TWIN VALLEY PRECISION E161  
BR MIDLAND  
BR ROYAL LASS 7036-19

RAG MR EXTRA WONDERFUL E  
XXB MISS EX WONDERFUL219M  
EGL G565

**XXB Notorious 816S ET**



<b>CE</b>	<b>BW</b>	<b>WW</b>	<b>YW</b>	<b>M</b>	<b>TM</b>	<b>GL</b>	<b>CED</b>	<b>SC</b>	<b>REA</b>	<b>MB</b>
1.1	31	73	26	42	-0.3		0.5	0.24	0.18	
.01	.01	.01	.01	.01		.01			.19	.17

EPDs for January 2008 **Homo Polled** **Hetero Black**

Substance - unmatched. Marbling - 4.35 IMF/125 ratio. Leanness - .26 Rib Fat.

AMGV975244

Born: 1/1/2006 **Semen:\$25**

**Balancer**

<b>GeneStar</b>	<b>Quality Grade</b>	<b>QG GPD</b>
	0 0	
	<b>Tenderness</b>	<b>T GPD</b>
	2 1 1	-1.447
	<b>Feed Efficiency</b>	<b>FE GPD</b>

BON VIEW NEW DESIGN 1407  
G A R INTEGRITY  
G A R PRECISION 1019

EVE MR BEAU JANGLES 308B  
EGL G565  
EGL D594

**ATM Freedoms Champ 103K**



AMGV 704865

Born: 2/23/2000 Semen: \$15

CE	BW	WW	YW	M	TM	GL	CED	SC	REA	MB
101	1.8	40	78	15	35	-3.1	103	0.7	0.09	-0.07
.23	.37	.44	.21	.20		.22	.18	.18	.22	.20

EPDs for January 2008

Polled

Diluter Free

If you like beautiful females, Freedoms Champ semen needs to be on your purchase order. Great phenotype and diluter free red genetics with that extra touch of class.

Red	
Quality Grade	QG GPD
Tenderness	T GPD
Feed Efficiency	FE GPD

VAA LEACHMAN NEW DAY 205B  
SLC FREEDOM 178F ET  
BB MISS 61Y  
  
DBC BLACK DIAMOND 96C  
NTEX TEJAS DIAMOND GAL 103  
NTEX NORTEX MS DELILA 7461

**ATM Tejas Roych's Rocket360H**



AMGV 653934

Born: 10/13/1998 Semen: \$15

CE	BW	WW	YW	M	TM	GL	CED	SC	REA	MB
106	0.4	30	59	18	33	-0.8	106	1	0.12	0
.27	.42	.29	.21	.20		.24	.18	.18	.32	.26

EPDs for January 2008

Polled

Diluter Free

Powerhouse, diluter free red genetics. Tremendous individual birth to growth spread. Power genetics that will dominate in the showing and in the pasture.

Red	
Quality Grade	QG GPD
Tenderness	T GPD
Feed Efficiency	FE GPD

FLOTO  
ATM TEJAS ROLLS ROYCH 868  
FDA MISS ARATA 868K  
  
DBC BLACK DIAMOND 96C  
NTEX TEJAS DIAMOND GAL 103  
NTEX NORTEX MS DELILA 7461

**BTI Red Alert 2077K**



AMGV 706072

Born: 2/27/2000 Semen: \$25

CE	BW	WW	YW	M	TM	GL	CED	SC	REA	MB
106	-0.1	47	82	-5	19	-5.9	107	-0.1	0.07	-0.2
.68	.89	.84	.69	.54		.84	.50	.65	.74	.72

EPDs for January 2008

Homo Polled

Red

Red Alert is one of Freedom's most acclaimed sons. His dam is a tremendous brood cow, as she's extremely deep and bold sprung. Red Alert's calves look every bit as good as he does.

Red	
Quality Grade	QG GPD
Tenderness	T GPD
Feed Efficiency	FE GPD

VAA LEACHMAN NEW DAY 205B  
SLC FREEDOM 178F ET  
BB MISS 61Y  
  
POW BTI ZORRO 2143Z  
BTI LADY GRANITE 2001E ET  
KAB LADY GRANITE 432S

**DCSF Post Rock Top Brass ET**



AMGV 652929

Born: 10/8/1998 Semen: \$20

CE	BW	WW	YW	M	TM	GL	CED	SC	REA	MB
111	0.2	39	72	25	45	-0.2	107	1.4	-0.05	-0.08
.61	.86	.79	.61	.37		.79	.35	.58	.61	.57

EPDs for January 2008

Homo Polled

Diluter Free

Homo polled and diluter free genetics in a very attractive sire. Maternal excellence - gorgeous udders and super easy fleshing.

Red	
Quality Grade	QG GPD
Tenderness	T GPD
Feed Efficiency	FE GPD

KCF BENNETT HORIZON  
KCF BENNETT PACESETTER A16  
KCF MISS SELECT Y60  
  
JGW 3R RED SUMMIT 76Y ET  
JGW 3R PLD WILMA 215A  
JGW 3R WILMA 323Y ET

**DRJ Full Exposure**



AMGV 850181

Born: 2/7/2003 Semen: \$25

CE	BW	WW	YW	M	TM	GL	CED	SC	REA	MB
105	0.9	57	97	13	42	-3	103	0.7	0.32	-0.19
.38	.70	.59	.35	.19		.39	.19	.40	.29	.22

EPDs for January 2008

Homo Polled

Red

Homozygous polled, diluter free '04 & '05 division champion in Denver. Full Exposure daughter swept the '06 Louisville Heifer Futurity. Maternal grandam Phoebe sold for a breed record \$60,000 in the 2004 Eagle Pass Ranch Mature Cowherd Dispersal. A flawless phenotype on both sides of the pedigree.

Red	
Quality Grade	QG GPD
Tenderness	T GPD
Feed Efficiency	FE GPD

FHG FLYING H EXTRA 150D  
JRI EXTRA EXPOSURE 285L71 ET  
JRI MS POLLED SWEETIE 285C6  
  
SLC FREEDOM 178F ET  
EGL FELICIA ET  
EGL PHOEBE G374

**EGL Fosters LO17 ET**



CE	BW	WW	YW	M	TM	GL	CED	SC	REA	MB
98	3.7	61	101	21	52	-3.4	105	0.1	0.19	-0.17
.57	.90	.83	.71	.49		.87	.44	.71	.75	.73

EPDs for January 2008 **Homo Polled Red**

Fosters topped the 2002 National Gelbvieh Sale at \$50,000 and his calves look great. His incredible dam is one of the all-time greats and Foster's ET full sisters won National Champion Female honors both in 2002 and 2003. Proven genetics with high growth, proven progeny champions and a good kind.

AMGV 765517

Born: 3/2/2001 **Semen:\$ 25**

Red	
Quality Grade	QG GPD
0 0	
Tenderness	T GPD
2 0 2	-1.498
Feed Efficiency	FE GPD

VAA LEACHMAN NEW DAY 205B  
SLC FREEDOM 178F ET  
BB MISS 61Y

EGL BULLSEYE C154 ET  
EGL PHOEBE G374  
AKR 349A

**EGL Gadget F1258**



CE	BW	WW	YW	M	TM	GL	CED	SC	REA	MB
99	3.9	43	82	16	38	-1.4	98	1.1	0.4	-0.22
.58	.86	.79	.70	.58		.84	.44	.63	.82	.80

EPDs for January 2008 **Polled Red**

High growth Polled Gizmo son that has produced his share of National Champions. Excellent balance of super growth coupled with breed leading carcass merit and feed efficiency. Proven genetics with high growth, proven progeny champions and a good kind.

AMGV 562042

Born: 9/12/1996 **Semen:\$ 25**

Red	
Quality Grade	QG GPD
Tenderness	T GPD
Feed Efficiency	FE GPD

ATM TEJAS ROLLS ROYCH 868  
JEB POLLED GIZMO 17Z  
JEB MS. SENSATION 31X

JGW EDR LACEY 19Y ET  
EGL C151 ET  
RGRI MS PRIDE 10Y30 ET

**FHG Polled Pilgram 180A**



CE	BW	WW	YW	M	TM	GL	CED	SC	REA	MB
107	1.5	35	62	16	34	0	106	-0.1	-0.25	-0.14
.64	.85	.77	.61	.57		.75	.46	.61	.72	.70

EPDs for January 2008 **Homo Polled Red**

Polled Pilgram is a homozygous polled son of ABS's Flying Magnum. He is diluter free and his EPS's show good calving ease without sacrificing growth. Pilgram is very thick, deep ribbed sire who should be an outcross sire for many herds. Use this older proven diluter free calving ease sire.

AMGV 300788

Born: 3/24/1991 **Semen:\$ 15**

Red	
Quality Grade	QG GPD
Tenderness	T GPD
Feed Efficiency	FE GPD

GAA MAGNUM P.I.  
FHG FLYING MAGNUM 47X  
HAY HAY MISS P48

MRB 023S ET  
DFW MS SHADOW U78  
DGM MS. GOLD STANDARD 26R

**GJH Patriot's Minute Man**



CE	BW	WW	YW	M	TM	GL	CED	SC	REA	MB
108	-0.1	34	67	17	34	-1.2	106	0.3	-0.15	-0.11
.63	.87	.81	.61	.55		.81	.46	.62	.76	.73

EPDs for January 2008 **Polled Gold**

An older sire with proven genetics, calving ease, a balance of EPD's and a pedigree for females.

AMGV 438781

Born: 4/5/1994 **Semen:\$ 20**

Red	
Quality Grade	QG GPD
Tenderness	T GPD
Feed Efficiency	FE GPD

ATM TEJAS ROLLS ROYCH 868  
HHF W21 POLLED PATRIOT  
HHF RED GIRL T23 ET

CKS POLLED PROSPECTOR  
MCG MISS POLLED U50  
MCG 21R YELLOW GIRL

**HFGC GIP Extra Hot P60**



CE	BW	WW	YW	M	TM	GL	CED	SC	REA	MB
101	3.2	48	80	15	39	-0.9	104	1.3	0.19	-0.08
.26	.42	.31	.18	.15		.20	.14	.17	.29	.22

EPDs for January 2008 **Homo Polled Diluter Free**

Homozygous polled, diluter free, total outcross Freedom genetics. Excellent genetic package featuring the beefmaker Extra Exposure on the top side of the pedigree and the famed Barbara cow family on the bottom side. A young sire that's really stamping his progeny with structural correctness and flawless phenotype. Extra Hot's performance plus dam sports a 106 weaning weight ratio.

AMGV 897101

Born: 5/20/2004 **Semen:\$ 20**

Red	
Quality Grade	QG GPD
0 0	
Tenderness	T GPD
1 0 0	-0.349
Feed Efficiency	FE GPD


FHG FLYING H EXTRA 150D  
JRI EXTRA EXPOSURE 285L71 ET  
JRI MS POLLED SWEETIE 285C6

KIT TABASCO J26 ET  
MGA BARBARA 278M  
MGA GI BARBARA 936J

**HFGC HF Roscoe 34P59 ET**

CE	BW	WW	YW	M	TM	GL	CED	SC	REA	MB
107	-0.8	36	72	16	34	-3.8	104	0.4	0.22	-0.19
.24	.40	.32	.23	.21		.22	.19	.19	.32	.25

EPDs for January 2008      **Homo Polled**      **Red**



Roscoe's popularity is definitely on the rise with the powerful progeny he's producing. The beautiful Roscoe daughter photographed above was the high seller red heifer calf on the '07 Kansas/Nebraska "Pick of the Herds" Female sale. Roscoe's "JR" grandam IHF Miss Nugget 34U was one of the breeds all-time great Dam of Distinction producers with unbelievable longevity... 15 natural born calves.

AMGV 897100  
Born: 2/23/2004    Semen: \$20

Red	
Quality Grade	QG GPD
0	0
Tenderness	T GPD
2	0
Feed Efficiency	FE GPD


VAA LEACHMAN NEW DAY 205B  
SLC FREEDOM 178F ET  
BB MISS 61Y

GAA GARST BULL Z138  
HFGC MS PLD HART'S RUBY  
IHF MISS NUGGET 34U

**HFGC HF Ruben 34L21**

CE	BW	WW	YW	M	TM	GL	CED	SC	REA	MB
110	-2.1	35	70	19	37	-3.5	105	0.1	0.2	-0.22
.45	.71	.57	.35	.27		.52	.25	.32	.37	.30

EPDs for January 2008      **Polled**      **Red**



Powerful 2003 Reserve National Champion Bull that should really produce beef, butt, guts and eye appeal. Ruben swept the 2002 Kansas State Fair; 2002 American Royal and climaxed his show career winning National Champion honors in Denver. Ruben's dam is proving to be one of the breeds elite donor females and Ruben's Dam of Distinction grandam, Nugget 34U, is still actively producing embryos at 17 years of age. Power packed genetics and the first progeny report spells calving ease plus superb growth.

AMGV 771142  
Born: 2/16/2001    Semen: \$20

Red	
Quality Grade	QG GPD
Tenderness	T GPD
Feed Efficiency	FE GPD


VAA LEACHMAN NEW DAY 205B  
SLC FREEDOM 178F ET  
BB MISS 61Y

GAA GARST BULL Z138  
HFGC MS PLD HART'S RUBY  
IHF MISS NUGGET 34U

**HHF Polled Summit 648U**

CE	BW	WW	YW	M	TM	GL	CED	SC	REA	MB
104	3.9	38	68	21	40	1.3	105	0.4	-0.13	-0.07
.84	.96	.95	.90	.90		.95	.86	.89	.92	.91

EPDs for January 2008      **Homo Polled**      **Red**



This homozygous polled sire's power is sweeping the country. His sons and daughters have topped as many-or more-sales as any red sire in the breed. Three sons in the '93 National Gelbvieh Sale averaged \$10,000, with a \$15,000 high. Polled Summit also sired the Champion Pen of Three and Champion Pen of Five Bulls at the '93 National Show. Summit repeated that feat by siring the Champion pen of Three at the '94 Nationals and that pen show is geared towards the commercial man. Polled Summit daughters carry his stamp of greatness, complete with a moderate frame, depth of rib and beautiful teat/udder combinations.

AMGV 173081  
Born: 9/28/1986    Semen: \$25

Red	
Quality Grade	QG GPD
0	0
Tenderness	T GPD
2	0
Feed Efficiency	FE GPD

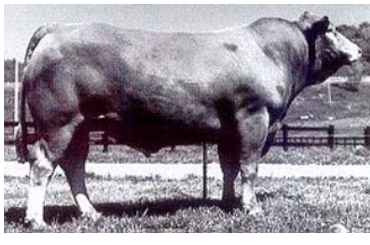
DGA COWBOY  
BMB STATESMAN P214  
BMB MISS 16K

FLOTO  
CPG MISS FLOTO PRIDE 187R  
ELA MISS L182

**HHF Summits Pride A36ET**

CE	BW	WW	YW	M	TM	GL	CED	SC	REA	MB
110	1.3	36	62	23	41	0.1	109	0.8	0.07	-0.11
.46	.78	.66	.47	.41		.61	.31	.51	.52	.48

EPDs for January 2008      **Homo Polled**      **Red**



Thick, eye appeal, and great muscling. Out cross for many Gelbvieh breeders. Solid EPDs! Red and homozygous polled. A red sire well tested without a Freedom pedigree. They are thick, well muscled and have plenty of eye appeal.

AMGV 327936  
Born: 9/20/1991    Semen: \$15

Red	
Quality Grade	QG GPD
Tenderness	T GPD
Feed Efficiency	FE GPD


BMB STATESMAN P214  
HHF POLLED SUMMIT 648U  
CPG MISS FLOTO PRIDE 187R

EGF POLLER'S PRIDE  
HHF W9 MISS GLORY 238M  
LNR MISS FLOTO 238M

**JCGR Bar GT Louie 2J**

CE	BW	WW	YW	M	TM	GL	CED	SC	REA	MB
102	0.9	48	85	16	40	-3	101	0.7	0.33	-0.02
.74	.90	.84	.74	.52		.86	.51	.70	.72	.69

EPDs for January 2008      **Homo Polled**      **Red**



Sold for \$11,000 for 50% interest at the "Spirit of the West" Jumping Cow Fall '99 Sale. 2nd in class to the eventual 2000 National Champion and Futurity Champion bull, Boo Ba. Sired by increasing popular 'Bud' bull - National and Futurity Champion ! His dam, the Money Cow, is absolutely fault free. Money Cow - dam of \$6,00 Dawn heifer... good cows produce good offspring! Top producers in Denver appreciate his overall rib, thick top and rump, his deep twist, large quarter, and enormous square butt.

AMGV 656047  
Born: 1/14/1999    Semen: \$25

Red	
Quality Grade	QG GPD
0	0
Tenderness	T GPD
2	1
Feed Efficiency	FE GPD
1	2

GKT BOO BOO 155E  
GKT BUD 11G  
GKT KATIE

PGRS SHINING SPIRIT  
WRGA 049C  
WRGA 041Z

**JDPD Astro 407S**

AMGV 977933

Born: 3/2/2006 Semen: \$25

CE	BW	WW	YW	M	TM	GL	CED	SC	REA	MB
103	2.1	39	71	19	39	-2.6	103	0.4	0.03	-0.05
.18	.32	.21	.11	.05		.14	.04	1	.11	.08

EPDs for January 2008 **Multiple Polled** -

Astro is what the beef business is all about... meat, middle and total pounds. His individual birth to growth spread is phenomenal... 88 pound birth with to 808 pound 205 day weight. Astro's first calf dam traces to the famed Sugar cow family that helped mold this great breed. The total package... flawless phenotype, beef, butt and guts.

**Red**

Quality Grade	QG GPD
Tenderness	T GPD
Feed Efficiency	FE GPD

HAD SLEEP TIGHT ET  
JDPD ROLEX 151M  
VTG VISTA MS FREEDOM 0151K

HAD LANCELOT 795L  
HAD PRINCESS OF ALOT 407P  
HAD 140 L

**JDPD Rolex 151M**

AMGV 805051

Born: 6/20/2002 Semen: \$20

CE	BW	WW	YW	M	TM	GL	CED	SC	REA	MB
108	0.7	35	63	19	37	-3.1	105	0.6	-0.02	-0.02
.38	.73	.57	.39	.10		.54	.09	.29	.26	.17

EPDs for January 2008 **Homo Polled Red**

2005 Reserve National Champion. 2004 Louisville Reserve Grand Bull. This deep-sided long hiped, muscular Shining Spirit grandson should really compliment Freedom daughters. Grand bull and the Houston Stock Show, Colorado and Oklahoma State Fair.

**Red**

Quality Grade	QG GPD
0 0	
Tenderness	T GPD
0 0 2	-0.8
Feed Efficiency	FE GPD

PGRS SHINING SPIRIT  
HAD SLEEP TIGHT ET  
WRGA PRINCESS OF POWER

SLC FREEDOM 178F ET  
VTG VISTA MS FREEDOM 0151K  
VTG VISTA HORIZON 7201G

**JRI Fully Exposed 270N83**

AMGV 883933

Born: 8/21/2003 Semen: \$20

CE	BW	WW	YW	M	TM	GL	CED	SC	REA	MB
101	3.4	42	75	18	39	-1.8	103	1.1	0.18	-0.04
.35	.58	.47	.26	.17		.57	.16	.31	1	1

EPDs for January 2008 **Homo Polled Diluter Free**

Diluter-free red genetics...totally unrelated to Freedom and all red sire lines.

Crowd favorite Senior Champion Bull in the 2006 National Gelbvieh Show.

Impressive stats: 82# modest birth, 742# WW/105 ratio, 1258# YW/106 ratio, 184 cm. yearling pelvic, 39.1 cm yearling scrotal, 4.83# ADG, 0.08 yearling backfat and 14.1" ribeye.

This Judd Ranch 270 cow family is one of the shortest gestation/superb growth cow families in the breed.

**Red**

Quality Grade	QG GPD
0 0	
Tenderness	T GPD
1 0 0	-0.349
Feed Efficiency	FE GPD

FHG FLYING H EXTRA 150D  
JRI EXTRA EXPOSURE 285L71 ET  
JRI MS POLLED SWEETIE 285C6

JBOB CAROLINA CPR  
JRI MS LIFESAVER 270K73  
JRI MS PLD JONI 270D63 ET

**JRI Heavy Equipment 125M3**

AMGV 805882

Born: 2/1/2002 Semen: \$25

CE	BW	WW	YW	M	TM	GL	CED	SC	REA	MB
109	0.6	40	85	17	37	-2.7	107	0.6	0.02	-0.23
.51	.80	.70	.45	.24		.74	.22	.47	.34	.26

EPDs for January 2008 **Homo Polled Red**

Full brother to breed's no 1 selling calving ease AI sire JRI Pld Free Agent 125J3. Heavy Equipment is homozygous polled by DNA testing and his full brother Free Agent is proven homozygous polled and diluter free.

**Red**

Quality Grade	QG GPD
0 1 1 0	6.64
Tenderness	T GPD
2 0 0	-0.698
Feed Efficiency	FE GPD
2 2 2 0	-3.5196

VAA LEACHMAN NEW DAY 205B  
SLC FREEDOM 178F ET  
BB MISS 61Y

JRI PLD GRAND PRIX ET  
JRI MS PLD GRAND PRIX 125G3  
JRI MS PLD SUMMIT 125D3

**JRI New Trend 217D5**

AMGV 434820

Born: 2/3/1994 Semen: \$20

CE	BW	WW	YW	M	TM	GL	CED	SC	REA	MB
99	4.2	37	67	9	28	1.1	104	0	-0.29	-0.17
.59	.88	.82	.70	.66		.84	.57	.78	.74	.71

EPDs for January 2008 **Homo Polled Red**

This homozygous polled sire stamps as much phenotype and dimension into his progeny as any bull in the breed. Daughters are deep ribbed, easy fleshing females that know how to bring home the beef.

**Red**

Quality Grade	QG GPD
Tenderness	T GPD
Feed Efficiency	FE GPD

ATM TEJAS ROLLS ROYCH 868  
DBC MR POLL ROLLS ROYCE 94Z  
DBC MISS PROSPECTOR 65X

HHF POLLED SUMMIT 648U  
JRI PLD CLASSY 217B4  
JRI 217Z3

**JRI Peak Performer 213N5**



AMGV 852295

Born: 2/8/2003 Semen: \$20

CE	BW	WW	YW	M	TM	GL	CED	SC	REA	MB
102	2.1	40	72	15	35	-1	105	0.3	-0.22	-0.16
.38	.70	.57	.42	.24		.66	.21	.49	.33	.24

EPDs for January 2008 **Homo Polled Red**

Spring 2005 New Sire Addition...first calf crop at Judd Ranch looks fantastic.

One power-packed Free Agent son out of one super Judd Ranch cow family.  
 Dam, JRI Ms Pd New Design 213G4 stats: 99 BW ratio (85 lb. average); 112 WW ratio (766 lb. average/no creep); 112 YW ratio (1,348 lb. average on four sons).

Red	
Quality Grade	QG GPD
Tenderness	T GPD
Feed Efficiency	FE GPD

SLC FREEDOM 178F ET  
 JRI PLD FREE AGENT 125J3  
 JRI MS PLD GRAND PRIX 125G3  
 JRI NEW TREND 217D5  
 JRI MS PD NEW DESIGN 213G4  
 JRI MS EQUALIZER 213Y3

**JRI PLD Free Agent 125J3**



AMGV 665810

Born: 1/28/1999 Semen: \$20

CE	BW	WW	YW	M	TM	GL	CED	SC	REA	MB
112	-3.4	29	63	12	27	-5.1	107	0.7	-0.36	-0.24
.80	.94	.90	.83	.71		.92	.65	.85	.84	.82

EPDs for January 2008 **Homo Polled Diluter Free**

This homozygous polled, diluter free son of Freedom is proving to be one of the best calving ease sires in the breed. Note his superior calving ease, low birth and gestation length EPD strength in the breed's top 5% or better.

Red	
Quality Grade	QG GPD
0	0
Tenderness	T GPD
2	0
	1
Feed Efficiency	FE GPD
	-1.098

VAA LEACHMAN NEW DAY 205B  
 SLC FREEDOM 178F ET  
 BB MISS 61Y  
 JRI PLD GRAND PRIX ET  
 JRI MS PLD GRAND PRIX 125G3  
 JRI MS PLD SUMMIT 125D3

**JRI Prime Cut 406S30**



AMGV 989049

Born: 2/18/2006 Semen: \$20

CE	BW	WW	YW	M	TM	GL	CED	SC	REA	MB
111	-0.8	36	69	16	34	-2.3	107	1.2	0.08	-0.19
.26	.36	.26	.21	.17		.36	.16			

EPDs for January 2008 **Multiple Polled -**

If you're needing to add more depth of rib, natural thickness and muscle mass Prime Cut needs to be on your purchase order. His super Dam of Merit dam sports a 105 weaning weight ratio and a 720# average 205 day weight. Prime Cut's full sister JRI 406N30 weaned a 745 pound bull calf her first year.

Red	
Quality Grade	QG GPD
Tenderness	T GPD
Feed Efficiency	FE GPD

FHG FLYING H EXTRA 150D  
 JRI EXTRA EXPOSURE 285L71 ET  
 JRI MS POLLED SWEETIE 285C6  
 JRI PLD FREE AGENT 125J3  
 JRI MS LEGACY 406L20  
 JRI MS PLD CELEB 406G10 ET

**JRI Top Secret 253M75 ET**



AMGV 806019

Born: 1/22/2002 Semen: \$20

CE	BW	WW	YW	M	TM	GL	CED	SC	REA	MB
107	-1.8	33	73	13	30	-5.9	105	1.3	-0.13	-0.2
.53	.81	.72	.50	.24		.79	.23	.62	.35	.28

EPDs for January 2008 **Homo Polled Red**

This homozygous polled, diluter free, low birth, wide spread growth powerhouse was a member of Judd Ranch's 2003 Reserve National Champion Pen of 3 Bulls. His beautiful donor dam JRI Ms Pld Frontier 253J60 won National Champion Female honors in 2001 and raised a 900 pound plus bull calf her first year. Top Secret's first fall born sons averaged \$5,114 in the Judd Ranch '06 Bull Sale and they posted an amazing 6.29 lbs a day on ADG.

Red	
Quality Grade	QG GPD
0	0
Tenderness	T GPD
2	0
	0
Feed Efficiency	FE GPD
	-0.698

SLC FREEDOM 178F ET  
 JRI PLD FREE AGENT 125J3  
 JRI MS PLD GRAND PRIX 125G3  
 SLC FREEDOM 178F ET  
 JRI MS PLD FRONTIER 253J60  
 JRI MS PLD SHAKER 253E51 ET

**KIT Tabasco J26 ET**



AMGV 651078

Born: 1/7/1999 Semen: \$20

CE	BW	WW	YW	M	TM	GL	CED	SC	REA	MB
107	0.9	45	78	19	42	-0.5	108	2.2	0.01	0.01
.67	.90	.84	.69	.50		.85	.45	.66	.70	.66

EPDs for January 2008 **Homo Polled Diluter Free**

Outcross homozygous polled purebred red genetics. Totally non-related to Freedom. Produced '06 National Champion Female.

Red	
Quality Grade	QG GPD
0	0
Tenderness	T GPD
1	0
	1
Feed Efficiency	FE GPD
	-0.749

BEA POLLED MIDNIGHT  
 TLR COCOA 35C  
 TLR MISS KAISER 449Y  
 BETZ PREMIER'S BLAQ MAGIC  
 BETZ MAGIC MUFFIN F64  
 RMJG MS MACIE 302C

**KLBF King Of The Hill 16H 'Hank'**

CE	BW	WW	YW	M	TM	GL	CED	SC	REA	MB
100	3.6	56	95	15	43	-2.4	113	0	0.01	0.01
.43	.84	.78	.68	.52		.65	.43	.44	.75	.72

EPDs for January 2008      **Homo Polled**      **Diluter Free**

Still dominates all our performance categories

Produces exceptional replacement females

A red bull to use as a "Freedom Alternative"

Hank is deep bodied, deep quartered, high volume, easy traveling bull with performance numbers

Hank calves are very attractive, upheaded, gentle, and very marketable.

His daughters have met with great acceptance.

Diluter free

**AMGV651744**Born: 11/18/1998    **Semen:\$ 20**

Red				
GeneSTAR	Quality Grade	QG	GPD	
	1	0	1	10.29
	Tenderness	T GPD		
2	0	1	-1.098	
Feed Efficiency	FE GPD			
2	2	2	1	-3.7396

ELK CK NIGHT TRAIN POLL 28Z  
ELK FREIGHTTRAIN 836D  
CDG 836XBMB COLLEGE FUND  
KLBF GOLD FUND  
NKP PGR MS GOLD 130S**MLH Mr Goldrush K49**

CE	BW	WW	YW	M	TM	GL	CED	SC	REA	MB
106	0.5	40	83	15	35	-3.4	104	0.2	0.1	-0.16
.36	.57	.38	.27	.22		.41	.20	.20		

EPDs for January 2008      **Homo Polled**      **Homo Black**

Red				
GeneSTAR	Quality Grade	QG	GPD	
	Tenderness	T GPD		
	Feed Efficiency	FE GPD		

VAA LEACHMAN NEW DAY 205B  
SLC FREEDOM 178F ET  
BB MISS 61YJEB BCC POLLED HAWK 28A  
MLH MS GOLDRUSH H43  
MLH MISS GOLDRUSH F37**AMGV704732**Born: 1/28/2000    **Semen:\$ 15****RHRT Independence L19**

CE	BW	WW	YW	M	TM	GL	CED	SC	REA	MB
110	-0.1	43	81	22	44	-1.7	106	0.4	0.16	-0.05
.50	.79	.67	.48	.24		.73	.18	.40	.24	.15

EPDs for January 2008      **Hetero Polled**      **Red**

Spring 2005 New Sire Addition - total outcross for Freedom daughters.

Syndicated two years ago as one of the top selling bulls in the breed.

Independence is producing low birth weights, quick weight gain and sound/easy fleshing progeny. Excellent combo of flawless phenotype and excellent EPD strength.

Red			
GeneSTAR	Quality Grade	QG	GPD
	0	0	
	Tenderness	T GPD	
1	0	2	-1.149
Feed Efficiency	FE GPD		

KCF BENNETT IDEAL G182  
KCF BENNETT J25  
KCF MISS VALUE E86TOP RED JET E1 ET  
TOP MIS RED JET E270H7  
TOP MISS EZE E270**AMGV766448**Born: 3/5/2001    **Semen:\$ 30****RHRT Liberty**

CE	BW	WW	YW	M	TM	GL	CED	SC	REA	MB
109	1.6	48	88	20	44	-0.1	108	0.8	0.12	-0.04
.30	.49	.35	.24	.17		.31	.14	.16		

EPDs for January 2008      **Multiple Polled**      **Red**

Total outcross Freedom genetics. Powerful maternal brother to the breed's popular AI sire RHRT Independence L19. The incredible dam of Liberty and Independence sports a 108 weaning weight ratio with a 104 yearling weight ratio. Used very successfully on virgin heifers.

Red			
GeneSTAR	Quality Grade	QG	GPD
	0	0	
	Tenderness	T GPD	
2	0	1	-1.098
Feed Efficiency	FE GPD		

KCF BENNETT VISION A302  
KCF BENNETT G196  
KCF MISS VALUE E119TOP RED JET E1 ET  
TOP MIS RED JET E270H7  
TOP MISS EZE E270**AMGV870178**Born: 3/7/2003    **Semen:\$ 20****RID R Collateral 2R**

CE	BW	WW	YW	M	TM	GL	CED	SC	REA	MB
102	1.3	29	61	18	33	-2	101	0.2	0.12	-0.05
.39	.59	.48	.13	.11		.50	.09	.09		

EPDs for January 2008      **Homo Polled**      **Diluter Free**

The breed leader for Tenderness through GeneSTAR testing. Collateral brings the complete package, including a rarity of 5 out of 6 Tenderness genes. Nursed awesome first calf heifer that flat knows how to spread low birth to robust growth. If you are looking for that sire to add the all-important Tenderness genes without sacrificing phenotype, muscle and structure - look no further. Homozygous polled by DNA testing.

Red			
GeneSTAR	Quality Grade	QG	GPD
	0	1	
	Tenderness	T GPD	
2	1	2	-1.847
Feed Efficiency	FE GPD		

SLC FREEDOM 178F ET  
JCGR BAR GT FLASHBACK 410M  
BDCG CLAUDIA 1144JJCGR BAR GT LOUIE 2J  
JCGR BAR GT LONI 27N ET  
WRGA MS 16B**AMGV938431**Born: 2/5/2005    **Semen:\$ 25**

**RUP Ruppel Yukon 301P**



CE	BW	WW	YW	M	TM	GL	CED	SC	REA	MB
103	1.8	48	88	23	47	-1	108	0.8	0.27	0.04
.33	.55	.44	.24	.18		.45	.16	.28	.31	.23

EPDs for January 2008 **Homo Polled Diluter Free**

Total outcross to all red sire lines. Homozygous polled by DNA test. Diluter-free, top selling bull in Colorado Seedstock Plus Bull Sale at \$7,350. Diluter free red genetics with lots of volume and capacity in this growth sire.

AMGV 889624

Born: 1/11/2004 Semen:\$ 25

Red	
Quality Grade	QG GPD
0 0	
Tenderness	T GPD
2 0 0	-0.698
Feed Efficiency	FE GPD

KCF BENNETT ARSENAL E123  
KCF BENNETT IDEAL G182  
KCF MISS VISION E43  
VRT RUP LAZY TV HOTFUDGEJ  
RUP RASPBERRY 137M  
DMF HEARTBREAKER 1747H

**RWG Pure-Power P036**



CE	BW	WW	YW	M	TM	GL	CED	SC	REA	MB
99	3	47	84	13	37	-2	101	1.1	0.13	-0.04
.21	.38	.28	.20	.15		.25	.09	.15	1	1

EPDs for January 2008 **Polled Red**

2004 Canadian Reserve National Champion Bull Calf. 2005 Grand Champion Yearling Bull at the Western Canadian Gelbvieh Show and Reserve Champion Junior Bull at the Canadian National Show. Diluter free Canadian outcross genetics out of one of the best females in the Gelbvieh breed...824 pound average 205 day weight on her four calves.

AMGV 919689

Born: 1/16/2004 Semen:\$ 30

Red	
Quality Grade	QG GPD
Tenderness	T GPD
Feed Efficiency	FE GPD

EGL GADGET F1258  
EGL GARTH J040 ET  
BCM LADY IN BLACK ET  
XZR C342  
SLC MISS HADIE 70H  
KDA SADIE

**SLC Freedom 178F ET**



CE	BW	WW	YW	M	TM	GL	CED	SC	REA	MB
106	-0.4	41	84	11	32	-6	105	0.3	0.13	-0.29
.91	.97	.95	.91	.88		.96	.84	.90	.93	.92

EPDs for January 2008 **Homo Polled Diluter Free**

Freedom is a calving ease bull that is homozygous polled, diluter free and sires cattle that grow. He continues to sire sale toppers, show winners, and you will be proud to be the owner of a bull, steer, or female that is sired by Freedom. Look at his EPDs - a leader in calving ease, birth weight, growth, gestation and daughter's calving ease. This dark red bull can be used with confidence!

AMGV 601105

Born: 2/26/1996 Semen:\$ 25

Red	
Quality Grade	QG GPD
0 1 0 1	6.73
Tenderness	T GPD
2 0 1	-1.098
Feed Efficiency	FE GPD

GLT SENSATION'S DAY 21Y  
VAA LEACHMAN NEW DAY 205B  
VAA 023Z  
BB MR FORKAS 1S (JSE M2)  
BB MISS 61Y  
BB BELL ORCHID

**TJB Jagermeister 229M - ET**



CE	BW	WW	YW	M	TM	GL	CED	SC	REA	MB
98	3.6	55	92	3	31	-3.2	100	0.1	0.17	-0.2
.50	.83	.75	.53	.29		.74	.28	.50	.45	.39

EPDs for January 2008 **Homo Polled Red**

2005 New Sire Addition that swept the 2003 Breeder's Choice Bull Futurity and topped the 2003 National Sale at \$50,000. Jagermeister is one tremendous individual with loads of style and power. His Polled Gizmo/JR dam, Jasmine, is one of the top donor females ever owned by the breed leading TJB Gelbvieh program in Georgia.

AMGV 802499

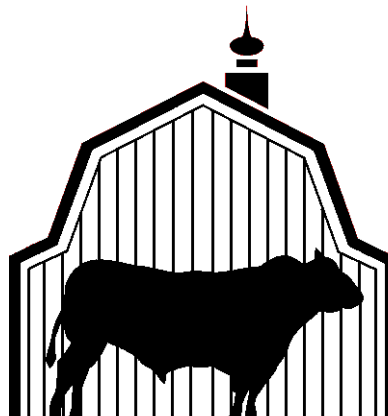
Born: 1/18/2002 Semen:\$ 20

Red	
Quality Grade	QG GPD
0 0	
Tenderness	T GPD
2 0 0	-0.698
Feed Efficiency	FE GPD

SLC FREEDOM 178F ET  
BTI RED ALERT 2077K  
BTI LADY GRANITE 2001E ET  
JEB POLLED GIZMO 17Z  
TJB 59D5 JASMINE 177G ET  
TJB MISS JR'S JENNY 59D ET

## Ordering and Shipping

- \* We deliver by Bull Barn truck, FedEx, UPS or US Mail
- \* Information needed: Name, address, phone, email address (if applicable), and the date the shipment is needed.
- \* You may place your order by phone, FAX, or email.
- \* Free shipping on orders of 100 units or more.
- \* Overnight (or 2-day, east or west coast) service available at extra charge



**Eldon and Kathy Starr**

210 Starr Drive

Stapleton, NE 69163

**800-535-6173**

FAX: 308-587-2248

Email: [bullbarn@accessdirectwb.net](mailto:bullbarn@accessdirectwb.net)

Web: [www.bullbarn.com](http://www.bullbarn.com)

### **Breed Association:**

American Gelbvieh Association

10900 Dover Street

Westminster, CO 80021

303-465-2333

### **FEED EFFICIENCY INDEX**

A brief explanation of Bovigen's Feed Efficiency index. This is a DNA test that identifies an animal's ability to efficiently convert feed. The markers were identified which allows producers to identify genetic lines towards more efficient feed conversions to maintain less cost in production. Studies have shown that feed efficiency has six times more effect on feedyard profitability than average daily gain. In a cow calf operation feed cost (grass and purchased feed) will normally be more than one half the cost of production. The GeneSTAR Feed Efficiency test is made up of four markers. For an example: a feed efficiency GPD of -3.0 will eat 3 pounds less feed per day than one with a 0. On a 150 day feeding period with cost of \$165.00 per ton the -3.0 GPD animal will cost \$37.00 less to feed without effecting performance or carcass quality.