

Bull Barn Genetics

Gelbvieh Semen Catalog

2009



Bull Barn Genetics

Gelbvieh Semen 2009

In the past few years, the beef industry has changed more than any other 20 year period. We too, are making changes in the merchandising of semen. We have on our website (www.bullbarn.com) the pictures of sires for you to view. You may print a copy of our catalog from of the pictured bulls on our website. Enclosed is a complete listing of Gelbvieh genetics available in today's market. The order of the bulls in this catalog is black, balancers followed by red.

If we can be of any service, let our over 40 years of semen knowledge in Gelbvieh and other breeds help lead your program down a path of success. Progeny are the true transmission of genetics, and we encourage more emphasis on looking at progeny as they become available. We have provided the EPDs and Accuracy to help in your sire selection. We have listed the higher quality Black Angus and Red Angus sires that work well for the Balancer programs.



Eldon and Kathy Starr

210 Starr Drive

Stapleton, NE 69163

Phone: 1-800-535-6173

FAX: 1-308-587-2248

Email:

bullbarn@accessdirectwb.net

Web: www.bullbarn.com

Disclaimer of Warranty

Bull Barn Genetics and its agents or employees cannot grant the conception rate, quality or productivity to be obtained in connection with the use of its products or recommended techniques. Therefore, it makes no warranty of any kind whatsoever expressed or implied, which extends beyond description of the products herein and all warranties of merchantability and fitness for a particular purpose and hereby disclaimed. Furthermore, neither Bull Barn Genetics nor any of its or their agents or employees shall be responsible for any inquiry, damage, or loss caused to persons, animals, or property through the negligent use or handling of its or their products, or for any damage or loss due to any defects in the containers used in connection therewith.

ALS Maverick 70T

AMGV 1052246
Born: 9/3/2007 Semen: \$25

CE BW WW YW M TM GL CED SC REA MB
100 2.2 41 74 21 42 -2.5 107 1 -0.03-0.05
.19 .31 .24 .18 .11 .31 .09 .20 | |

EPDs for January 2009 **Multple Polled Black**

Top selling bull in the 2008 Bluegrass Gelbvieh Invitational Sale. Maverick nursed a super, moderate framed, deep ribbed, highly productive 6- year-old dam. The first carcass plus CTR Highlight 066K son on the market with a very limited semen supply on 066K. Highlight 066K daughters really milk at with the combo of Maverick's performance plus dam, expect the Maverick daughters to be maternal plus.

Black Purebred			
Quality Grade	QG GPD		
Genestar			
Tenderness	T GPD		
Feed Efficiency	FE GPD		

MCJ RJ HIGHLIGHT 732H
CTR HIGHLIGHT 066K
CTR 442D

ALS FREEDOMS REFLECTION
ALS MS EBONY REFLECTION
ADS MS S&S PLD GIZMO

BABR Playboy

AMGV 811614
Born: 3/14/2002 Semen: \$30

CE BW WW YW M TM GL CED SC REA MB
105 0.6 38 66 19 38 -2.3 105 0.6 0.01-0.05
.49 .78 .65 .41 .31 .70 .28 .52 .42 .36

EPDs for January 2009 **Dbl Pol/Scurred Homo Black**

Balance in EPD's and genetics to make great females.

Black Purebred			
Quality Grade	QG GPD		
Genestar			
Tenderness	T GPD		
Feed Efficiency	FE GPD		

JNS MR IMAGE 6E ET
LWHF FEARLESS
JNS MISS CAROLINA POWER 25

SPUR BERETTA 703G
GDX 23K
GDX 01E

BCFG Butlers Ole Hickory 359R

AMGV 938083
Born: 1/8/2005 Semen: \$25

CE BW WW YW M TM GL CED SC REA MB
101 3.1 46 78 13 36 -1.5 105 0.5 -0.09 -0.1
.25 .43 .27 .17 .15 .27 .13 .15 | |

EPDs for January 2009 **Homo Polled Black**

Butler Creek Farms Ole Hickory 359R swept the Junior Bull Calf Championship and was talk of the 2005 Louisville Show. His first calf maternal plus dam possesses excellence in the teat/udder department. Performance plus individual with an incredible 959 pound 205 day weight.

Black Purebred			
Quality Grade	QG GPD		
Genestar	0	0	
Tenderness	T GPD		
	2	0	0
Feed Efficiency	FE GPD		
			-0.698

FHG FLYING H EXTRA 150D
BTI EXTRA 2106K ET
BTI LADY GRANITE 2001E ET
SLC RATED-R KIOSK 115K
TJB ASK NO QUESTIONS 359N E
SLC ANITA 19F ET

BDCG Citizen F39L ET

AMGV 750442
Born: 1/6/2001 Semen: \$20

CE BW WW YW M TM GL CED SC REA MB
110 -2.1 35 72 15 33 -5.6 110 -0.2 0.04-0.19
.48 .80 .70 .48 .35 .58 .31 .30 .56 .51

EPDs for January 2009 **Polled Black**

Citizen was the second high-selling bull in the 2002 National Gelbvieh Sale and is first calf crop looks very impressive. Citizen's famous dam, DCSF Post Rock Arata 39F2 co-owned by Post Rock Cattle Co., and Beying's Dawson Creek has produced numerous sale toppers on the National level. His first calf crop is exhibiting his super rump structure/eye appeal.

Black Purebred			
Quality Grade	QG GPD		
Genestar			
Tenderness	T GPD		
Feed Efficiency	FE GPD		

VAA LEACHMAN NEW DAY 205B
SLC FREEDOM 178F ET
BB MISS 61Y

DCSF POST ROCK HEARTLAND
DCSF POST ROCK ARATA 39F2
DCSF POST ROCK ARATA 32C2

BNC P455 "Raisin the Bar"

AMGV 913043
Born: 3/26/2004 Semen: \$20

CE BW WW YW M TM GL CED SC REA MB
95 4.4 79 131 21 61 -1.1 104 1.3 0.15-0.04
.35 .63 .51 .23 .17 .32 .14 .29 .20 .19

EPDs for January 2009 **Polled Black**

Raisin the Bar was purchased for his outcross genetics and his amazingly powerful growth. He logged an amazing 1016 pound adjusted weaning weight and a 1546 pound yearling weight. He had a 41 cm scrotal and a 16 adjusted ribeye area. Carcass and reproductive traits all in one package.

Black Purebred			
Quality Grade	QG GPD		
Genestar			
Tenderness	T GPD		
Feed Efficiency	FE GPD		

JCGR BAR GT EINSTEIN
HAD THE JUDGE ET
CDBG MISS MEG 63F

WAC ELK NIGHT RYDER 522E E
BNC J914
BNC G743

BTI Extra 2106K ET



AMGV 714886
Born: 3/5/2000 Semen: \$25

CE	BW	WW	YW	M	TM	GL	CED	SC	REA	MB
106	-0.8	40	70	0	20	-1.7	108	0.4	-0.18	-0.18
.74	.92	.87	.76	.53		.87	.46	.74	.73	.70

EPDs for January 2009 **Homo Polled** **Black**

2106K is one of Beartooth Ranches, MT hottest bulls right now out of the legendary donor, Lady Granite 2001E. The Extra 2106K calves look ultra complete and sound with plenty of performance. A complete package with phenotype, great dam.

Black Purebred

Quality Grade	QG	GPD
0	0	
Tenderness	T GPD	
2	0	-1.098
Feed Efficiency	FE GPD	

KCF BENNETT PREMIER Z104
FHG FLYING H EXTRA 150D
FHG MS FHG NITE LADY 50A

POW BTI ZORRO 2143Z
BTI LADY GRANITE 2001E ET
KAB LADY GRANITE 432S

CTR Echo 575E



AMGV 488923
Born: 4/2/1995 Semen: \$20

CE	BW	WW	YW	M	TM	GL	CED	SC	REA	MB
97	2.1	40	67	25	45	-2.1	106	0.9	0.25	-0.38
.80	.95	.92	.85	.83		.92	.75	.83	.91	.90

EPDs for January 2009 **Homo Polled** **Homo Black**

Echo is one of the most popular black sires in the breed. He consistently sires thick, wide based, stout, feminine females with plenty of milk. His progeny have more Grand and Reserve Champions than any other sire. If muscle, correct structure, and overall quality are your needs in Gelbvieh, look no further.

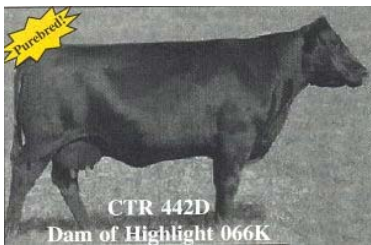
Black Purebred

Quality Grade	QG	GPD
0	0	0
Tenderness	T GPD	
1	0	-0.349
Feed Efficiency	FE GPD	

BEA POLLED MIDNIGHT
MCJ BLACK HUSKER
OLY 30X

AAA TOM HORN
CTR CEDAR TOP'S MISS POWER
CTR STAR FLOPRIM 659U

CTR Highlight 066K



AMGV 721537
Born: 3/30/2000 Semen: \$35

CE	BW	WW	YW	M	TM	GL	CED	SC	REA	MB
98	2.5	44	80	21	43	-2.1	108	1	-0.08	-0.01
.46	.83	.74	.54	.28		.70	.22	.39	.35	.26

EPDs for January 2009 **Homo Polled** **Homo Black**

Spring 2005 New Sire Addition...produced top selling bull in Cedar Top Ranch spring 2005 bull sale. 066K's sire in a structured carcass test yielded the highest carcass weights- all "choice" except one "select," making him the top bull in the evaluation. Dam, CTRG 442D, is one of the most dominant females at Cedar Top Ranch and in the Gelbvieh breed. Super combo of excellent EPD strength and flawless phenotype. Semen is limited.

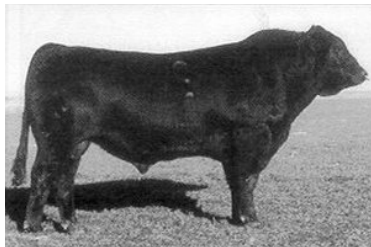
Black Purebred

Quality Grade	QG	GPD
Tenderness	T GPD	
Feed Efficiency	FE GPD	

CTR SARGE 563E
MCJ RJ HIGHLIGHT 732H
MCJ RJ 529E

CTR CEDAR TOP'S BERKLEY
CTRG 442D
POW MISS SANDHILLS 65A

CTRG Limited Edition 411D1



AMGV 439840
Born: 3/17/1994 Semen: \$15

CE	BW	WW	YW	M	TM	GL	CED	SC	REA	MB
108	-3.1	34	59	31	48	-2.3	106	0.2	-0.11	-0.06
.76	.89	.84	.70	.67		.85	.55	.68	.79	.77

EPDs for January 2009 **Polled** **Black**

Limited Edition has been a standby for calving ease. He currently is a trait leader for calving ease, birth weight, milk, gestation length, and calving ease of daughters. His daughters are easy fleshing with muscle and volume. Limited Edition's dam, Tiffany, is famous at Cedar Top Ranch and has continued to be an elite cow in the breed.

Black Purebred

Quality Grade	QG	GPD
Tenderness	T GPD	
Feed Efficiency	FE GPD	

KCF VIRGINIAN
KCF BENNETT PREMIER Z104
GAA GARST COW R9599

MCJ BLACK HUSKER
CTRG CEDAR TOP'S TIFFANY
CTRG CEDAR TOPS TIFFANY

CTRG Vision 52E



AMGV 544174
Born: 9/9/1995 Semen: \$25

CE	BW	WW	YW	M	TM	GL	CED	SC	REA	MB
104	1	42	77	13	34	-1.6	103	0.8	0.13	-0.17
.50	.83	.73	.47	.53		.75	.41	.43	.63	.59

EPDs for January 2009 **Homo Polled** **Homo Black**

CTRG Vision 52E is a recently released syndication bull that has been not available to the public. Vision is the ultimate female producer. They are feminine fronted and very structurally correct with perfect udders. Commercial cattlemen have demanded sons for years at bull sales where available. Vision sons have been sale toppers for many years. Use this great breeding bull to add marketability and quality to your calf crop.

Black Purebred

Quality Grade	QG	GPD
Tenderness	T GPD	
Feed Efficiency	FE GPD	

BEA POLLED MIDNIGHT
MCJ BLACK HUSKER
OLY 30X

ATM TEJAS ROLLS ROYCH 868
CTRG CEDAR TOPS 010Y
CTRG BLACK POLL STARR 212W

DAR National 302N

AMGV 846221

Born: 2/4/2003 Semen: \$20

CE	BW	WW	YW	M	TM	GL	CED	SC	REA	MB
101	0.5	52	105	20	46	-1.9	106	0.6	0.3	0.12
.34	.58	.47	.30	.19		.33	.16	.21	.35	.28

EPDs for January 2009 **Homo Polled Homo Black**

Homozygous black and homozygous polled with three stars of tenderness. National sired the second high selling bull at the 2007 Iowa Beef Expo. His progeny look great!

Black Purebred

Quality Grade	QG	GPD
0	0	
Tenderness	T GPD	
2	0	1
		-1.098
Feed Efficiency	FE GPD	

MLLC M/L ADVANTAGE
FHG VVFG FLYING H EXCLUSIVE
FHG FLYING H CADISISTER 95E

GKT BUD 11G
FHG FLYING H MS BUD 240L ET
CKA WOODLAND BELLE 217B

DAR Rawhide 201M ET

AMGV 795575

Born: 1/25/2002 Semen: \$25

CE	BW	WW	YW	M	TM	GL	CED	SC	REA	MB
98	4.6	58	100	7	36	-2.3	106	0	0.27	-0.08
.40	.75	.65	.44	.27		.55	.22	.33	.40	.33

EPDs for January 2009 **Homo Polled Homo Black**

Rawhide was Cedar Top Ranches, NE pick at the 2003 Iowa Beef Expo. He looks to be the next step in genetics from the great Bronco. Rawhide is long thick and deep, and of course, great profiled.

Black Purebred

Quality Grade	QG	GPD
Tenderness	T GPD	
Feed Efficiency	FE GPD	

CSG ELK BLACK PLD KENO 26E
ELK CK BRONCO 411G
ELK 411D

JEB POLLED GIZMO 17Z
CKA WOODLAND BLACKBIRD 62
CKA WOODLAND BLACKBIRD 43

DCH Hille M118 Majesty

AMGV 819729

Born: 3/7/2002 Semen: \$20

CE	BW	WW	YW	M	TM	GL	CED	SC	REA	MB
115	-5.1	44	85	23	45	-5.4	113	0.7	0.05	0.05
.54	.78	.68	.39	.26		.68	.26	.57	.45	.39

EPDs for January 2009 **Double Polled Black**

Look at birth, growth and profile.

Black Purebred

Quality Grade	QG	GPD
Tenderness	T GPD	
Feed Efficiency	FE GPD	

JBOB CAROLINA POWER
DCH HILLE K23 KODIAK
DCH F04

TLR COCOA 35C
DCH HILLE J01 JERI
DCH G10

DCSF Post Rock Granite 200P2

AMGV 930426

Born: 9/15/2004 Semen: \$20

CE	BW	WW	YW	M	TM	GL	CED	SC	REA	MB
107	-1	55	97	13	41	-3.9	105	0	0.08	-0.08
.43	.71	.59	.27	.14		.37	.11	.14	.28	.21

EPDs for January 2009 **Homo Polled Homo Black**

200P2 was the most exciting bull to sell in the 2006 sale season. He posted 110 WW ratio, and is in the top 10% of the breed for WW, top 5% for YW, and top 30% for Calving Ease and low Birth Weight. Top genetics for growth eye appeal with a moderate birth EPD.

Black Purebred

Quality Grade	QG	GPD
0	0	
Tenderness	T GPD	
1	0	0
		-0.349
Feed Efficiency	FE GPD	

BTI EXTRA 2106K ET
BTI GRANITE 2135M
BTI ELECTRA B 2001H

MRCO NEW DIRECTION 905
DCSF POST ROCK TWILA 223M2
DCSF POST ROCK TWILA 3F2

EGL Northern Wind P068 ET

AMGV 907439

Born: 2/15/2004 Semen: \$25

CE	BW	WW	YW	M	TM	GL	CED	SC	REA	MB
111	0.8	52	83	14	40	0.4	106	0.5	0.35	-0.01
.39	.77	.50	.33	.17		.69	.13	.33	.35	.27

EPDs for January 2009 **Homo Polled Homo Black****Black Purebred**

Quality Grade	QG	GPD
Tenderness	T GPD	
Feed Efficiency	FE GPD	

FHG FLYING H EXTRA 150D
EGL NORTHERN EXPOSURE J171
EGL C111 ET

GKT BUD 11G
EGL OLIVIA J811 ET
EGL OLIVE F025 ET

EGR Ellison 608F "Mitch"

AMGV 541139
Born: 3/10/1996 Semen: \$18

CE BW WW YW M TM GL CED SC REA MB
111 -1.9 23 47 17 29 -2 108 1 0.08 -0.01
.56 .79 .70 .45 .37 .40 .26 .54 .45 .39

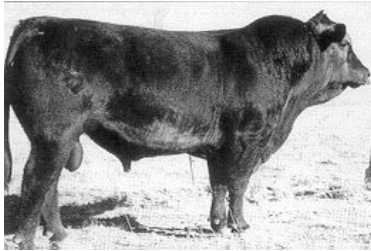
EPDs for January 2009 **Homo Polled Homo Black**

"Mitch" will give the breeder calving ease along with new genetics for many breeding programs. The calves are vigorous at birth but keep growing with nice tops, expression of muscling and plenty of capacity. Look for Mitch to add maternal traits and a great set of daughters to the most discriminating breeding programs.

Black Purebred

GeneStar	Quality Grade	QG GPD
	Tenderness	T GPD
	Feed Efficiency	FE GPD

ATM TEJAS ROLLS ROYCH 868
PBSG BLACK TIE 123A
MCG MISS MCG 59X
EGR BLACK BOB
EGR D7
EGR B76

ELK Ace Ventura 234F

AMGV 536298
Born: 3/13/1996 Semen: \$18

CE BW WW YW M TM GL CED SC REA MB
114 -3.3 21 51 11 22 -2.3 106 -0.1 0.06 0.08
.82 .92 .87 .76 .72 .87 .54 .75 .84 .83

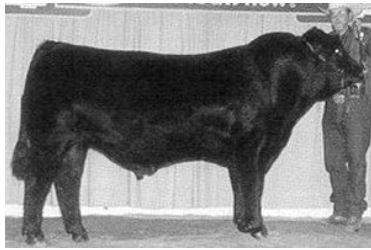
EPDs for January 2009 **Homo Polled Homo Black**

Ace Ventura is a sire to use on heifers and expect almost no assistance and the calves will be black and polled. The females are heavy milking, easy fleshing, and good uddered. Ace Ventura will work well on large frame females.

Black Purebred

GeneStar	Quality Grade	QG GPD
	Tenderness	T GPD
	Feed Efficiency	FE GPD

KCF BENNETT PREMIER Z104
MLLC M/L ADVANTAGE
CTR CEDAR TOP'S PERFECTA
JEB ACE OF SPADES 10X
ELK SPADES LADY DPBK 234A
POW MISS BLK IMP 11X

ELK CK Bronco 411G

AMGV 586994
Born: 4/10/1997 Semen: \$30

CE BW WW YW M TM GL CED SC REA MB
103 2.6 59 111 0 30 -2 106 0.7 0.24 -0.07
.77 .94 .91 .83 .77 .90 .67 .81 .89 .88

EPDs for January 2009 **Homo Polled Homo Black**

Bronco will be an outcross for many programs and adds performance and eye appeal to his progeny. His balance of traits along with his physical eye appeal will add many dollars to his progeny. Look for his progeny to be the most talked about Gelbvieh, whether it be at shows or on weigh day.

Black Purebred

GeneStar	Quality Grade	QG GPD
	Tenderness	T GPD
	Feed Efficiency	FE GPD

FHG FLYING H CADILLAC 184C
CSG ELK BLACK PLD KENO 26E
LBW MS GIL PADDY 110W 11Z
ELK CK NIGHT TRAIN POLL 28Z
ELK 411D
RON 250X

ELK CK Crazy Horse 138P

AMGV 902554
Born: 2/28/2004 Semen: \$20

CE BW WW YW M TM GL CED SC REA MB
101 3 55 102 22 50 -1.6 104 0.8 -0.01 0.07
.41 .80 .68 .42 .18 .74 .14 .47 .30 .22

EPDs for January 2009 **Homo Polled Homo Black**

Crazy Horse is an attractive patterned, level topped bull who possesses loads of muscle shape. He was Division Champion at the 2006 NWSS. Crazy Horse's maternal grand-dam is a Dam of Merit, and her dam has been a Dam of Distinction for years.

Black Purebred

GeneStar	Quality Grade	QG GPD
	Tenderness	T GPD
	Feed Efficiency	FE GPD

GKT BOO BOO 155E
GRU ELK DEE JAKE 744J
GRU MS COCOA 744G
EGR ELK CREEK LONER 712G
ELK CK KERRY 138L
ELK CK KITTEN 826H

FHG Flying H Cadillac 184C

AMGV 384878
Born: 3/6/1993 Semen: \$15

CE BW WW YW M TM GL CED SC REA MB
105 2.4 47 87 20 44 0.5 108 1.6 0.04 -0.1
.72 .91 .87 .74 .75 .88 .67 .72 .84 .82

EPDs for January 2009 **Polled Black**

There are a few units of semen left on this proven sire.

Black Purebred

GeneStar	Quality Grade	QG GPD
	Tenderness	T GPD
	Feed Efficiency	FE GPD

KCF VIRGINIAN
KCF BENNETT PREMIER Z104
GAA GARST COW R9599
VTG BEL BOY 367U
FHG 22Y
FHG MS FLYING H 43U

FHG Flying H Extra 150D



AMGV 427849
Born: 2/25/1994 Semen: \$20

CE	BW	WW	YW	M	TM	GL	CED	SC	REA	MB
111	-1.7	32	52	12	28	-2.5	106	0.3	-0.17	-0.05
.91	.96	.94	.89	.88		.94	.82	.88	.93	.92

EPDs for January 2009 **Homo Polled** **Homo Black**

Extra is a highly proven calving ease bull with the added feature of being homozygous black and homozygous polled. Along with being a heavily use sire, he produces marketability in his progeny. He has been used on large frame cows and higher birth weight females to moderate the progeny.

Black Purebred

Quality Grade	QG	GPD
0	0	2
10.58		
Tenderness	T GPD	
2	0	0
-0.698		
Feed Efficiency	FE GPD	

KCF VIRGINIAN
KCF BENNETT PREMIER Z104
GAA GARST COW R9599

GNG NIGHT HAWK 08X
FHG MS FHG NITE LADY 50A
FHG MR FHG BEL BOY 114Y

GGGE 3G Rio Bravo 564R



AMGV 940384
Born: 3/11/2005 Semen: \$30

CE	BW	WW	YW	M	TM	GL	CED	SC	REA	MB
100	1.2	42	82	13	34	-2.6	106	0.4		
.28	.45	.36	.21	.19		.43	.17	.20		

EPDs for January 2009 **Polled** **Black**

Exciting new black polled sire that swept the '06 American Royal and Louisville shows. Exceptional disposition. Cowman kind of bull - loaded with beef, butt and guts. Powerful 3G cow family with Rio Bravo's dam sporting 106 weaning weight ratio.

Black 88%

Quality Grade	QG	GPD
0	1	
10.58		
Tenderness	T GPD	
2	0	0
-0.698		
Feed Efficiency	FE GPD	

VAA LEACHMAN NEW DAY 205B
SLC FREEDOM 178F ET
BB MISS 61Y

GGGR 3G COWBOY 155L
GGGE 3G COWGIRL NOTIONS 3
GGGE 3G COWGIRL LYDIA 147L

GGGE 3G Space Cowboy



AMGV 983071
Born: 2/7/2006 Semen: \$25

CE	BW	WW	YW	M	TM	GL	CED	SC	REA	MB
103	0.5	36	74	14	32	-3.6	107	0.4		
.21	.28	.27	.18	.18		.24	.17	.17		

EPDs for January 2009 **Homo Polled** **Black**

Full brother to 2007 National Champion Bull Rio Bravo. Space Cowboy's first calves look exceptional. First calf crop produced the 2008 Louisville Reser Champion Female and 4th overall heifer calf (over all breeds) at the 2008 Hoosier Beef Congress Show with 854 heifer calves in competition. Power 3G Ranch cow family.

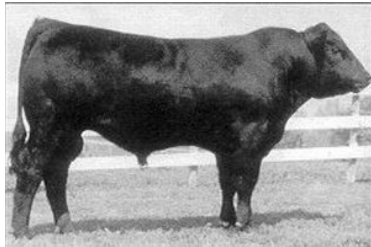
Black 88%

Quality Grade	QG	GPD
Tenderness	T GPD	
Feed Efficiency	FE GPD	

VAA LEACHMAN NEW DAY 205B
SLC FREEDOM 178F ET
BB MISS 61Y

GGGR 3G COWBOY 155L
GGGE 3G COWGIRL NOTIONS 3
GGGE 3G COWGIRL LYDIA 147L

GKT Bud 11G



AMGV 567881
Born: 1/5/1997 Semen: \$20

CE	BW	WW	YW	M	TM	GL	CED	SC	REA	MB
108	-1.4	43	78	13	35	-2.4	105	0.2	0.43	0.01
.82	.93	.90	.82	.78		.90	.70	.82	.89	.87

EPDs for January 2009 **Homo Polled** **Black**

Bud was the 1998 Grand Champion Bull at the National Western Stock Show and the 1998 Breeders Choice Futurity Champion bull. Bud puts calving ease, growth, and eye appeal in his progeny. His first calf crop has created excitement across the United States.

Black Purebred

Quality Grade	QG	GPD
Tenderness	T GPD	
Feed Efficiency	FE GPD	

FHG FLYING H CADILLAC 184C
GKT BOO BOO 155E
CCD X55

DCJ MR PEPPER SHAKER
GKT KATIE
PHG PRAIRIE LIZA A22

GKT Dusty 16J



AMGV 655343
Born: 1/6/1999 Semen: \$25

CE	BW	WW	YW	M	TM	GL	CED	SC	REA	MB
109	-1.1	34	73	12	29	-4.5	108	0.1	0.2	0.05
.67	.86	.80	.60	.50		.82	.38	.63	.71	.68

EPDs for January 2009 **Homo Polled** **Homo Black**

The \$17,000 bull that should receive a great deal of attention from producer that are breeding their first calf heifers. Style with substance is an apt description of Dusty. First calves are coming easy and to date all appear to be polled. The bull deserves your attention - - he will be an "impact player". Recommended for first calf heifers.

Black Purebred

Quality Grade	QG	GPD
Tenderness	T GPD	
Feed Efficiency	FE GPD	

GKT BOO BOO 155E
GKT BUD 11G
GKT KATIE

DDF OTIS ET
GKT 45F
GAR GAUGLER LADY 440D

GPE Widespread 3L

AMGV 774454
Born: 1/24/2001 Semen: \$10

CE	BW	WW	YW	M	TM	GL	CED	SC	REA	MB
99	4.1	31	63	13	29	-0.1	105	0.2	-0.07	-0.07
.43	.72	.61	.41	.31		.61	.22	.43	.33	.26

EPDs for January 2009 **Polled** **Homo Black**

Tremendous low birth to super growth spread with incredible rib, volume and capacity in a phenotypically flawlessly made package. Beautiful Dam of Me dam with a perfect teat/udder quality. Dam ratios: 93 BW, 103 WW and 105 YW (Widespread at 1,383). Dam's second calf only weighed 68 pounds at birth while spreading growth at 748 pounds.

Black Purebred			
Quality Grade	QG GPD		
0	0		
Tenderness	T GPD		
2	0	1	-1.098
Feed Efficiency	FE GPD		

JBOB CAROLINA 911
JBOB CAROLINA PARKWAY
REMC SHOW GIRL ET 517E

FHG FLYING H EXTRA 150D
GPE SWEETIE'S BABY DOLL 1J
JRI PLD GRAND PRIX 108G61

HYEK Black Impact 3960N

AMGV 844875
Born: 2/7/2003 Semen: \$25

CE	BW	WW	YW	M	TM	GL	CED	SC	REA	MB
103	0.1	42	70	15	36	-5.7	103	-0.1	0.01	-0.02
.40	.74	.63	.32	.15		.54	.11	.38	1	1

EPDs for January 2009 **Homo Polled** **Homo Black**

Progeny are looking impressive, moderate frame and muscle expression. Black Impact comes from a proven dam.

Black Purebred			
Quality Grade	QG GPD		
1	0		
Tenderness	T GPD		
2	0	0	-0.698
Feed Efficiency	FE GPD		

ELK CK SCORPION 2343H ET
HYEK BLACK IMPULSE 1296L
OAKK VALLEY LADY 296J

FHG FLYING H EXTRA 150D
HYEK BLACK RUBY 9604J
HYEK DOTTIE F6048

JBOB 2279J ET (Carolina RC)

AMGV 677948
Born: 3/30/1999 Semen: \$20

CE	BW	WW	YW	M	TM	GL	CED	SC	REA	MB
97	3	58	93	17	46	-1.1	107	1.5	0.3	-0.17
.51	.86	.79	.62	.52		.75	.46	.61	.74	.71

EPDs for January 2009 **Homo Polled** **Homo Black**

Full brother to J-Bob 241J "Julia", the Champion Female at 2001 North American and 2001 National Western
Daughters are long necked, clean fronted, feminine females while sons are high performing with an attractive look.
Brings in greatness of Echo and Sherman Tank. Adds pounds, muscle, volume rib in an attractive package.

Black Purebred			
Quality Grade	QG GPD		
0	0		
Tenderness	T GPD		
1	0	0	-0.349
Feed Efficiency	FE GPD		

MCJ BLACK HUSKER
CTR ECHO 575E
CTR CEDAR TOP'S MISS POWE

DDM MR SHERMAN TANK
JBOB MISS 92C
LDL LL MISS AUGUST

JBOB 3303K ET "Junior"

AMGV 708967
Born: 3/24/2000 Semen: \$25

CE	BW	WW	YW	M	TM	GL	CED	SC	REA	MB
104	0.6	38	74	27	46	-2.5	107	0.7	0.26	-0.17
.58	.85	.77	.60	.33		.78	.30	.57	.47	.40

EPDs for January 2009 **Homo Polled** **Homo Black**

Top selling bull in the JBOB Farms '05 Complete Dispersal Sale. Junior's maternal pedigree features two of the all-time great homozygous black, homozygous polled females in the breed - Miss 92C and Miss August '84Y'. Miss 92C and Miss August '84Y' progeny commanded all the top dollars in the JBOB Dispersal.
Proven pedigree, moderate frame, muscle, depth and superior phenotype.

Black Purebred			
Quality Grade	QG GPD		
0	0		
Tenderness	T GPD		
2	0	0	-0.698
Feed Efficiency	FE GPD		

MCJ BLACK HUSKER
CTR ECHO 575E
CTR CEDAR TOP'S MISS POWE

DDM MR SHERMAN TANK
JBOB MISS 92C
LDL LL MISS AUGUST

JBOB Carolina CPR

AMGV 611761
Born: 9/13/1997 Semen: \$15

CE	BW	WW	YW	M	TM	GL	CED	SC	REA	MB
109	0.4	35	60	34	52	-0.7	104	0.9	0.12	0.24
.67	.91	.87	.74	.71		.85	.61	.72	.85	.84

EPDs for January 2009 **Polled** **Homo Black**

Breed leader for milk and total maternal EPD strength. Unmatched maternal strength coupled with exceptional carcass merit.

Black Purebred			
Quality Grade	QG GPD		
0	1		
Tenderness	T GPD		
2	0	0	-0.698
Feed Efficiency	FE GPD		

ALS MR ELBONY ROLLS
JBOB 254D
JBOB 151A

JBOB CAROLINA POWER
JBOB 719E
JBOB MISS SUMMITT 41A

JBOB Carolina Fortune 2564JET

CE	BW	WW	YW	M	TM	GL	CED	SC	REA	MB
107	1.6	53	108	32	59	-0.3	106	0.6	0.27	0.17
.75	.93	.89	.77	.55		.89	.45	.72	.77	.74

EPDs for January 2009 **Homo Polled** **Homo Black**

Proven genetics offering extra growth, attractive progeny with EPD's putting your genetics at a higher scale.



AMGV 687061

Born: 11/10/1999 Semen: \$25

Black Purebred	
Quality Grade	QG GPD
0	1
Tenderness	T GPD
2	0
Feed Efficiency	FE GPD

JBOB 254D
JBOB CAROLINA CPR
JBOB 719E

DDM MR SHERMAN TANK
JBOB MISS 92C
LDL LL MISS AUGUST

JBOB Carolina Hero 4659M ET

CE	BW	WW	YW	M	TM	GL	CED	SC	REA	MB
108	0	39	76	17	37	-1.9	109	0.9	0.15	-0.07
.51	.80	.69	.48	.27		.71	.23	.46	.41	.34

EPDs for January 2009 **Homo Polled** **Homo Black**

Carolina Hero will be the first Encore son in the Cattlemen's Connection sire line up and note his strong maternal pedigree features on of the breed's all time greats, LDL LL Miss August '84Y'. '84Y' along with her daughters and grandsons commanded all the top dollars in the JBOB Farms Complete Dispersal Sale. Carolina Hero offers you that super blend of calving ease, growth, maternal strength and feedlot merit. GeneSTAR tested three stars for tenderness and one star for marbling.



AMGV 840694

Born: 11/25/2002 Semen: \$20

Black Purebred	
Quality Grade	QG GPD
1	0
Tenderness	T GPD
2	0
Feed Efficiency	FE GPD

MLLC M/L ADVANTAGE
MLLC M/L ENCORE
MLLC M/L MISS MIDNIGHT 333C

CTR ECHO 575E
JBOB 2308J ET
LDL LL MISS AUGUST

JBOB Carolina Parkway

CE	BW	WW	YW	M	TM	GL	CED	SC	REA	MB
106	1.7	22	54	22	33	1	109	0.4	-0.01	-0.08
.64	.86	.79	.60	.55		.80	.37	.57	.74	.71

EPDs for January 2009 **Homo Polled** **Homo Black**



AMGV 616917

Born: 2/18/1998 Semen: \$15

Black Purebred	
Quality Grade	QG GPD
Tenderness	T GPD
Feed Efficiency	FE GPD

RKG POWERSTROKE
JBOB CAROLINA 911
KRT METTLER'S DIANA

POW JETSTREAM 36B
REMC SHOW GIRL ET 517E
TLR 10B

JBOB Carolina Power

CE	BW	WW	YW	M	TM	GL	CED	SC	REA	MB
99	2.9	49	84	20	45	-1	102	0.8	-0.07	0.22
.77	.93	.90	.80	.80		.90	.71	.79	.87	.86

EPDs for January 2009 **Polled** **Homo Black**

Carolina Power is a calving ease specialist. Progeny have great performan and eye appeal. Daughters milk very well wit lots of phenotype. Produces sons with eye appeal that generate dollars. Supply is limited due to Power's death.



AMGV 408724

Born: 9/9/1993 Semen: \$20

Black Purebred	
Quality Grade	QG GPD
0	0
0	1
5.29	
Tenderness	T GPD
2	0
0	
-0.698	
Feed Efficiency	FE GPD

KCF VIRGINIAN
KCF BENNETT PREMIER Z104
GAA GARST COW R9599

CBA CORNHUSKER RED
HPL MISS HUSKER 029Z
HPL MISS FLOTATION 719W

JCGR BAR GT Einstein

CE	BW	WW	YW	M	TM	GL	CED	SC	REA	MB
95	4.3	59	109	14	44	1.9	106	1	0.06	-0.01
.62	.89	.84	.66	.68		.81	.60	.66	.79	.77

EPDs for January 2009 **Homo Polled** **Black**

Einstein is certainly a growth bull that produces progeny with eye appeal. Progeny will have a smooth muscle pattern with depth of rib, volume, and th correctness to improve quality. Use Einstein to add growth!



AMGV 520797

Born: 2/12/1996 Semen: \$20

Black Purebred	
Quality Grade	QG GPD
Tenderness	T GPD
Feed Efficiency	FE GPD

BEA POLLED MIDNIGHT
TLR COCOA 35C
TLR MISS KAISER 449Y

BBW PRIME RATE
HPL MISS PRIME RATE 54U
MRB 114S

JCGR Bar GT Mach One 54L



CE	BW	WW	YW	M	TM	GL	CED	SC	REA	MB
101	2.8	31	59	17	33	-1.1	105	0.5	0.02	-0.11
.63	.87	.80	.63	.47		.78	.40	.54	.65	.61

EPDs for January 2009 **Polled/Scur** **Black**

The Gelbvieh breed's powerful 2003 National Champion Bull. Mach One topped Jumping Cow Gelbvieh '03 Sale at \$30,000. Mach One's fabulous dam, BDCG Claudia 1144J sold for \$20,000 in the Jumping Cow '03 Sale - Claudia and her progeny grossed over \$90,000.

AMGV 749202

Born: 1/18/2001 **Semen:\$20**

Black Purebred

Quality Grade	QG	GPD
0	1	
Tenderness	T GPD	
1	0	1
Feed Efficiency	FE GPD	
	-0.749	

VAA LEACHMAN NEW DAY 205B
SLC FREEDOM 178F ET
BB MISS 61Y
TLR COCOA 35C
BDCG CLAUDIA 1144J
BDCG E30

JHG Premonition 662S ET



CE	BW	WW	YW	M	TM	GL	CED	SC	REA	MB
108	0.6	36	67	19	37	-0.8	106	0.1	0.11	-0.1
.01	.01	.01	.01	.01		.01	.01	1	.16	.13

EPDs for January 2009 **Homo Polled** **Homo Black**

Premonition topped the Spring '07 Midwest Performance Bull Sale and he's one of the most complete young sires to come into the breed for some time. He's sired by the 2005 Breeder's Choice Futurity Bull Pegasus and his famed dam LJS Salley ET is one of the top producing donor females in the country.

AMGV 1006993

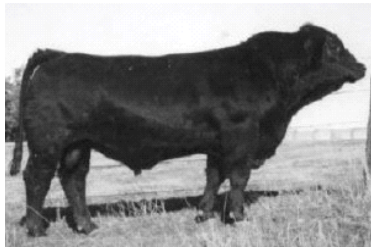
Born: 2/6/2006 **Semen:\$25**

Black Purebred

Quality Grade	QG	GPD
Tenderness	T GPD	
Feed Efficiency	FE GPD	

SLC FREEDOM 178F ET
PMG PEGASUS 01P
XXB MISS DREW 221M
FHG FLYING H EXTRA 150D
LJS SALLEY ET
HBZ 437Y

JOB Danell Diamond Six 41L



CE	BW	WW	YW	M	TM	GL	CED	SC	REA	MB
98	3	36	68	15	33	-1.7	99	0.6	0.05	-0.2
.46	.78	.69	.54	.34		.62	.24	.52	.45	.39

EPDs for January 2009 **Homo Polled** **Homo Black**

Ratioed 105 for REA and 129 for %IMF. He is a bull that shows tons of promise in improving carcass traits in your herd. Big bodied, thick made and wide topped. Diamond Six is an outstanding prospect that should not be overlooked this breeding season

AMGV 743983

Born: 3/16/2001 **Semen:\$20**

Black Purebred

Quality Grade	QG	GPD
1	0	
Tenderness	T GPD	
2	0	1
Feed Efficiency	FE GPD	
	-1.098	

MLLC M/L ADVANTAGE
MLLC M/L ENCORE
MLLC M/L MISS MIDNIGHT 333C
LCBK BCC SHAQ 26D
JOB PLD DANELL DIAMOND 18H
JEB BCC RITA 52D

JOB Danell Montana Infusion



CE	BW	WW	YW	M	TM	GL	CED	SC	REA	MB
108	0	48	100	15	39	-2.7	108	0.2	0.11	0
.40	.65	.52	.27	.20		.54	.18	.29	.35	.27

EPDs for January 2009 **Homo Polled** **Homo Black**

Two highly used sire and dam pedigrees in M/L Advantage and Freedom to make this a confident genetic package. Low birth EPD and good growth in the making.

AMGV 955705

Born: 2/14/2005 **Semen:\$30**

Black 88%

Quality Grade	QG	GPD
1	1	
Tenderness	T GPD	
2	1	1
Feed Efficiency	FE GPD	
	-1.447	

KCF BENNETT PREMIER Z104
MLLC M/L ADVANTAGE
CTR CEDAR TOP'S PERFECTA
SLC FREEDOM 178F ET
JOB DANELL TWICE FREE 8N
JOB DANELL O.J. 918L

JOB Danell Montana Proud ET



CE	BW	WW	YW	M	TM	GL	CED	SC	REA	MB
101	1.2	47	90	14	38	-1.8	100	0.3	0.26	0
.37	.65	.54	.31	.25		.32	.20	.22	.41	.34

EPDs for January 2009 **Homo Polled** **Homo Black**

Proven genetics behind this bulls pedigree. Balanced EPD's, good phenotype and muscle.

AMGV 852974

Born: 2/21/2003 **Semen:\$20**

Black 88%

Quality Grade	QG	GPD
Tenderness	T GPD	
Feed Efficiency	FE GPD	

MLLC M/L ADVANTAGE
MLLC M/L ENCORE
MLLC M/L MISS MIDNIGHT 333C
GKJ GRETA'S PROSPECT 616Z
CKA WOODLAND B ELBA 411D
CKA WOODLAND B ELBA 231B

JRI Black N Stacked 270M78



CE	BW	WW	YW	M	TM	GL	CED	SC	REA	MB
101	1.9	43	64	0	22	-3.7	107	-0.1	0.11	0.06
.53	.80	.72	.50	.41		.77	.39	.58	.53	.49

EPDs for January 2009 **Homo Polled** **Black**

Judd Ranch lost this beef packing machine. Limited Semen Supply! His birth to growth spread is phenomenal with an 84# birth, 205 day weight and 1345 on yearling weight. His fourth calf dam at Judd Ranch ranks as one of the best black polled Dam of Merit females on the ranch with perfect teat/udder quality and a big-time 106 weaning ratio on her calves.

AMGV 805943

Born: 2/4/2002 Semen: \$40

Black Purebred

Genesis STAR	Quality Grade		QG	GPD
	0	1		
	Tenderness		T GPD	
2	0	1	-1.098	
Feed Efficiency		FE GPD		

VAA LEACHMAN NEW DAY 205B
SLC FREEDOM 178F ET
BB MISS 61Y

FHG FLYING H EXTRA 150D
JRI MS PLD EXTRA STEP 270J67
JRI MISS PLD SAVVY 270G57

JRI Extra Exposure 285L71 ET



CE	BW	WW	YW	M	TM	GL	CED	SC	REA	MB
108	0.8	41	70	13	34	-1.3	105	1.3	0.25	-0.18
.73	.91	.86	.76	.56		.89	.54	.81	.73	.70

EPDs for January 2009 **Homo Polled** **Black**

If great cow families with perfect teat/udder systems are a necessity in your program this 2002 National Champion Bull is unmatched. Extra Exposure's dam, Polled Sweetie, was the '95 National Champion Female with an enormous amount of rib, volume and fleshing ability along with a beautiful mammary system. Exposure's maternal grandam, 285A5, has been acclaimed as one of the best females in the beef industry and she's also the dam of Grand Prix, the '96 National Champion Bull that ranks in the breeds top 10% for growth.

AMGV 757130

Born: 2/18/2001 Semen: \$20

Black Purebred

Genesis STAR	Quality Grade		QG	GPD
	0	0		
	Tenderness		T GPD	
2	0	0	-0.698	
Feed Efficiency		FE GPD		

KCF BENNETT PREMIER Z104
FHG FLYING H EXTRA 150D
FHG MS FHG NITE LADY 50A

HHF POLLED SUMMIT 648U
JRI MS POLLED SWEETIE 285C6
JRI MS PLD PREFERENCE 285A5

JRI Secret Weapon 164T5



CE	BW	WW	YW	M	TM	GL	CED	SC	REA	MB
106	-1.3	34	68	17	34	-3.8	101	1	-0.09	-0.14
.24	.36	.30	.25	.14		.35	.11	.30		

EPDs for January 2009 **Multiple Polled** **Black**

Outcross black genetics featuring wide spread birth to growth in one complete package from one powerful cow family. Secret Weapon's super seven year old dam sports a calving ease 81 pound average birth weight or her seven calves while spreading growth at 708 pounds on 205 day weight. Grandam JRI Ms Equalizer 164Y3 was honored numerous times as Dam of Merit and Dam on Distinction female. Excellent marbling score - plus 4... with 5 being the maximum score. Well endowed with a 42.1 centimeter yearling scrotal circumference.

AMGV 1032767

Born: 2/6/2007 Semen: \$20

Black Purebred

Genesis STAR	Quality Grade		QG	GPD
	Tenderness		T GPD	
Feed Efficiency		FE GPD		

JRI PLD FREE AGENT 125J3
JRI TOP SECRET 253M75 ET
JRI MS PLD FRONTIER 253J60

FHG FLYING H EXTRA 150D
JRI MS PLD ANGEL 164K4
JRI MS EQUALIZER 164Y3

JRI Top Grid 254T725



CE	BW	WW	YW	M	TM	GL	CED	SC	REA	MB
106	0.4	42	82	15	36	-3.4	106	0.9	-0.01	-0.17
.24	.34	.29	.24	.12		.35	.11	.31		

EPDs for January 2009 **Homo Polled** **Black**

Top selling bull in Judd Ranch's 2008 bull sale. 2008 Breeder's choice Futurity Runner-up Bull. Lead bull in Judd Ranch's '08 National Champion pen of 5 bulls. #1 Ribeye bull in the '08 Judd Ranch bull sale - 16.9 sq. in. yearling ribeye. Marbling score - plus 4... with 5 being the maximum score.

AMGV 1032813

Born: 1/30/2007 Semen: \$20

Black Purebred

Genesis STAR	Quality Grade		QG	GPD
	Tenderness		T GPD	
Feed Efficiency		FE GPD		

JRI PLD FREE AGENT 125J3
JRI TOP SECRET 253M75 ET
JRI MS PLD FRONTIER 253J60

JRI EXTRA EXPOSURE 285L71 E
JRI MSEXTRAIMPRESSD254P625
JRI MS PD BLACKHILLS 254E52

KCF Bennett Acclaim L336



CE	BW	WW	YW	M	TM	GL	CED	SC	REA	MB
107	0	49	82	15	40	0	110	0.7	0.12	-0.07
.53	.80	.72	.58	.29		.73	.24	.56	.53	.48

EPDs for January 2009 **Polled** **Homo Black**

Black Purebred

Genesis STAR	Quality Grade		QG	GPD
	Tenderness		T GPD	
Feed Efficiency		FE GPD		

KCF BENNETT HALLMARK E208
KCF BENNETT LANDMARK J377
KCF MISS VIRGINIAN A261

DFW BLACKJACK B538
KCF MISS BLACKJACK G243
KCF MISS HORIZON C126

AMGV 780564

Born: 10/4/2001 Semen: \$20

KCF Bennett Ideal G182

AMGV 565166

Born: 4/8/1997 Semen:\$20

CE	BW	WW	YW	M	TM	GL	CED	SC	REA	MB
105	2.3	55	90	27	55	-1	111	1.2	0.15	0.01
.67	.91	.86	.78	.69		.83	.61	.73	.85	.83

EPDs for January 2009

Polled

Black

Ideal is being proclaimed by many breeders across the country as one of the greatest female producing sires that there is. His daughters are extremely deep bodied and capacious, yet exhibit lots of fleshing ability and good udd quality.

Black Purebred

Quality Grade	QG	GPD
0	0	
Tenderness	T	GPD
1	0	0
		-0.349
Feed Efficiency	FE	GPD

KCF BENNETT TARGET A10
KCF BENNETT ARSENAL E123
KCF MISS PREMIER B88

KCF BENNETT VISION A302
KCF MISS VISION E43
KCF MISS HELAU Y167

KCF Bennett Kingpin K403

AMGV 746628

Born: 10/14/2000 Semen:\$20

CE	BW	WW	YW	M	TM	GL	CED	SC	REA	MB
108	2.2	59	102	21	51	-1.8	108	0.6	0.17	0.01
.58	.88	.81	.69	.40		.81	.34	.68	.69	.65

EPDs for January 2009

Homo Polled

Homo Black

There is lots of thickness and performance in the Kingpin calves. His pedigree is full of solid performers. The Kingpin calves have been sale features at many leading purebred sales this past year. Homo polled and homo black.

Black Purebred

Quality Grade	QG	GPD
0	0	
Tenderness	T	GPD
1	0	0
		-0.349
Feed Efficiency	FE	GPD

KCF BENNETT ARSENAL E123
KCF BENNETT IDEAL G182
KCF MISS VISION E43

KCF BENNETT BONUS F95
KCF MISS BONUS H321
KCF MISS VIRGINIAN A261

KCF Bennett Landmark J377

AMGV 700584

Born: 11/15/1999 Semen:\$20

CE	BW	WW	YW	M	TM	GL	CED	SC	REA	MB
104	1.9	57	98	16	45	1.2	107	1.1	0.35	-0.1
.68	.91	.86	.79	.59		.85	.49	.78	.85	.83

EPDs for January 2009

Polled

Black

Bennet Landmark was a very popular sire in 2008 and his progeny report ar EPD strength are very impressive. Landmark's ultrasound data released by Knoll Crest Farms in the fall of 2003 ranked him as the #1 overall sire group for ribeye and marbling (IMF) the past two years.

Black Purebred

Quality Grade	QG	GPD
1	0	
Tenderness	T	GPD
1	0	1
		-0.749
Feed Efficiency	FE	GPD

DFW BLACKJACK B538
KCF BENNETT HALLMARK E208
KCF MISS PREMIER C294

KCF VIRGINIAN
KCF MISS VIRGINIAN A261
KCF MISS FEATURE X148

KIT Urlacher M28 ET

AMGV 794369

Born: 3/25/2002 Semen:\$25

CE	BW	WW	YW	M	TM	GL	CED	SC	REA	MB
102	1.8	46	82	6	29	-0.8	107	-0.1	-0.07	-0.1
.44	.79	.71	.49	.28		.72	.22	.46	.45	.39

EPDs for January 2009

Homo Polled

Black

Urlacher combines the best of both the Lady Granite and Magic Muffin cow families. He has a great disposition and is siring lots of body depth and performance on a sound structure. Urlacher is big footed with bone.

Black Purebred

Quality Grade	QG	GPD
0	0	
Tenderness	T	GPD
2	0	1
		-1.098
Feed Efficiency	FE	GPD

SLC FREEDOM 178F ET
BTI RED ALERT 2077K
BTI LADY GRANITE 2001E ET

TLR COCOA 35C
KIT 64H2 ET
BETZ MAGIC MUFFIN F64

KMF Fast Anchor 35H

AMGV 622431

Born: 3/12/1998 Semen:\$20

CE	BW	WW	YW	M	TM	GL	CED	SC	REA	MB
101	1.9	47	88	18	42	-3.1	108	0.2	-0.17	-0.05
.54	.86	.80	.60	.54		.78	.39	.56	.69	.65

EPDs for January 2009

Homo Polled

Homo Black

Fast Anchor is fast to catch the attention of many breeders. He has a smooth and eye appealing pattern along with a good set of EPDs. Reports low birth weights and calves that show a lot of early growth. A good pedigree, combined with homozygous black and polled, make this bull look attractive for the upcoming breeding season.

Black Purebred

Quality Grade	QG	GPD
Tenderness	T	GPD
Feed Efficiency	FE	GPD

KCF BENNETT ANCHOR B227
WAC PLAINES' ANCHOR 1-503EE
WAC DAISY MAE 015C

POW MR MIDNITE 130C
KMF MISS MIDNITE 45E
KMF 245C

LWHF American Pride

AMGV 939878
Born: 2/23/2005 Semen: \$20

CE BW WW YW M TM GL CED SC REA MB
103 1.8 49 86 13 38 -1.3 102 0.3 0.27 0.02
.25 .48 .35 .14 .12 .14 .10 .10 .27 .19

EPDs for January 2009 **Homo Polled Homo Black**

2009 New Sire listing. Outcross to many of the popular black sires.
Tremendous carcass EPD strength. Special introductory semen price.

Black Purebred

Quality Grade		QG	GPD
0	0		
Tenderness		T GPD	
2	0	0	-0.698
Feed Efficiency		FE GPD	

MLLC M/L ENCORE
JOB DANELL MONTANA PROUD E
CKA WOODLAND B ELBA 411D

JBOB BLACK IMAGE
LWHF TRISHA HB ET
JNS MISS NITE TRAIN 7C ET

LWHF Santana ET

AMGV 805268
Born: 3/9/2002 Semen: \$20

CE BW WW YW M TM GL CED SC REA MB
104 2.5 54 86 11 38 1.2 103 0.5 0.01 0.01
.34 .66 .56 .41 .27 .24 .20 .22 .49 .43

EPDs for January 2009 **Double Polled Homo Black**

Homo black/Homo polled
Performance sire that will add muscle and substance
Calves perform both in feed lot and show ring

Black Purebred

Quality Grade		QG	GPD
Tenderness		T GPD	
Feed Efficiency		FE GPD	

JCGR BAR GT EINSTEIN
HAD KNOCKOUT
HAD ANNELIESE A018ET

ELK CK NIGHT TRAIN POLL 28Z
JNS MISS NITE TRAIN 7C ET
JNS MS TELESIS 1161K A38 ET

MLH Goldrush Visa J40

AMGV 656554
Born: 2/4/1999 Semen: \$22

CE BW WW YW M TM GL CED SC REA MB
107 0.2 47 95 13 37 1.3 106 -0.3 0.07 0.12
.68 .91 .86 .76 .48 .88 .42 .76 .62 .58

EPDs for January 2009 **Homo Polled Homo Black**

Visa combines calving ease and growth potential, not to mention maternal strength. Out of an outstanding Polled Midnight daughter that is big volume and heavy milking. Use VISA to keep calves black, polled, and add tremendous performance, muscle dimension, and eye appeal. 5.61 for "GM (Grid Merit EPD: expressed in dollars, carcass merit value passed to progeny) is in the top 4% of the breed. 25.06 for FM (Feedlot Merit EPD, expressed in dollars, feedlot value passed on to progeny) is in the top 1% of the breed.

Black Purebred

Quality Grade		QG	GPD
2	0	0	20.58
Tenderness		T GPD	
1	0	1	-0.749
Feed Efficiency		FE GPD	

KCF BENNETT PREMIER Z104
MLLC M/L ADVANTAGE
CTR CEDAR TOP'S PERFECTA

BEA POLLED MIDNIGHT
MLH MISS GOLDRUSH F42
OVF 114A

MLH Strait Forward R89

AMGV 935636
Born: 3/5/2005 Semen: \$25

CE BW WW YW M TM GL CED SC REA MB
100 2.2 53 105 14 41 0.1 104 0 0.14 0.08
.41 .76 .64 .35 .17 .68 .14 .43 .27 .19

EPDs for January 2009 **Homo Polled Homo Black**

Strait Forward is a new and exciting bull who owns excellent EPDs across the board, plus he's linebred to Goldrush Visa to provide more consistency in a breeding program. Strait Forward will add body depth, performance and style.

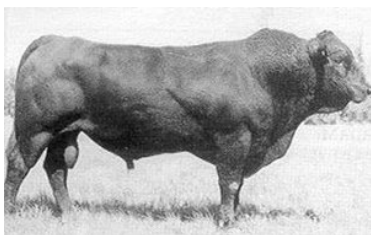
Do you need added carcass merit? A 7 star DNA tested with phenotype.

Black Purebred

Quality Grade		QG	GPD
2	1	0	22.02
Tenderness		T GPD	
2	1	1	-1.447
Feed Efficiency		FE GPD	

MLLC M/L ADVANTAGE
MLH GOLDRUSH VISA J40
MLH MISS GOLDRUSH F42

MLH GOLDRUSH VISA J40
MLH MISS GOLDRUSH M99
MLH MISS GOLDRUSH H9

MLLC M/L Advantage

AMGV 375086
Born: 3/19/1993 Semen: \$20

CE BW WW YW M TM GL CED SC REA MB
109 -0.3 41 85 23 44 -1.8 109 0 0.13 0.2
.78 .92 .89 .80 .79 .88 .70 .77 .84 .83

EPDs for January 2009 **Homo Polled Homo Black**

The trait leader specialist - calving ease, birth weight, weaning weight, yearling weight, milk, and gestation length. What more can a sire do? Homozygous black, homozygous polled, good and he will add dollars to your calves.

Black Purebred

Quality Grade		QG	GPD
Tenderness		T GPD	
Feed Efficiency		FE GPD	

KCF VIRGINIAN
KCF BENNETT PREMIER Z104
GAA GARST COW R9599

AAA TOM HORN
CTR CEDAR TOP'S PERFECTA
CTR 863X

MLLC M/L Encore

CE BW WW YW M TM GL CED SC REA MB
 112 -1.5 32 72 16 32 -3.4 108 0.6 0.13 0.06
 .79 .91 .88 .78 .73 .88 .63 .68 .81 .79

EPDs for January 2009 **Homo Polled Homo Black**

Notable offspring:

JBOB Carolina Hero 4659M ET - AI Sire
 JOB Danell Diamond Six 41L - AI Sire
 JOB Danell Montana Proud ET - AI Sire

AMGV 477160

Born: 1/26/1995 Semen: \$25

Black Purebred

Quality Grade		QG GPD	
1	0		
Tenderness		T GPD	
1	0	1	-0.749
Feed Efficiency		FE GPD	

KCF BENNETT PREMIER Z104
 MLLC M/L ADVANTAGE
 CTR CEDAR TOP'S PERFECTA

BEA POLLED MIDNIGHT
 MLLC M/L MISS MIDNIGHT 333C
 BCL GINGER

MRCO New Direction 905

CE BW WW YW M TM GL CED SC REA MB
 110 -0.9 44 76 29 51 -2.6 106 1.1 0.17 -0.17
 .76 .91 .86 .73 .64 .84 .56 .72 .81 .79

EPDs for January 2009 **Polled Black**

New Direction sold for \$15,000 at the 2000 NWSS. He was talked about many times after the 2000 NWSS. He has the outcross genetics for many breeding programs. New Direction has the potential to add calving ease and a great phenotype to your program with outstanding growth.

AMGV 660727

Born: 3/11/1999 Semen: \$20

Black Purebred

Quality Grade		QG GPD	
0	1		
Tenderness		T GPD	
2	0	0	-0.698
Feed Efficiency		FE GPD	

GLT SENSATION'S DAY 21Y
 VAA LEACHMAN NEW DAY 205B
 VAA 023Z

FHG FLYING H CADILLAC 184C
 MRCO CADILLAC LADY 541E
 FHG FHG MS JOHN HENRY 125B

MSH Flying H MSH Full Season

CE BW WW YW M TM GL CED SC REA MB
 100 3.3 46 83 15 38 -1.1 100 0.5 0.3 -0.14
 .54 .85 .78 .64 .42 .75 .36 .59 .70 .66

EPDs for January 2009 **Double Polled Black**

AMGV 801713

Born: 2/6/2002 Semen: \$30

Black Purebred

Quality Grade		QG GPD	
0	0		
Tenderness		T GPD	
2	0	0	-0.698
Feed Efficiency		FE GPD	

JEB POLLED GIZMO 17Z
 SPUR BERETTA 703G
 SPUR VANESSA 19E ET

FHG FLYING H EXTRA 150D
 MSH 3H
 MSH F23

OZZ EXT Governor 3N

CE BW WW YW M TM GL CED SC REA MB
 111 -1 47 92 22 46 -1.4 109 0.8 0.21 0.13
 .66 .87 .80 .62 .27 .81 .25 .49 .45 .38

EPDs for January 2009 **Homo Polled Homo Black**

Add up all the traits you look for in a bull and Governor covers all the bases. Muscular, phenotypically flawless package with excellent testicular development. Breed-leading EP_D strength for CE, BW, YW, TM, GL, GM and FM - all in the breeds top 25% or better.

AMGV 850450

Born: 1/14/2003 Semen: \$20

Black Purebred

Quality Grade		QG GPD	
0	0		
Tenderness		T GPD	
1	0	2	-1.149
Feed Efficiency		FE GPD	

MLLC M/L ADVANTAGE
 FHG VVFG FLYING H EXCLUSIVE
 FHG FLYING H CADISISTER 95E

DHW MR A34033E
 OZZ CHA MICHELL 74L
 OZZ MIDNIGHT SINGER 65H

OZZ Ideal Direction 8N

CE BW WW YW M TM GL CED SC REA MB
 106 3.6 61 103 25 56 2 106 0.6 0.16 -0.1
 .44 .78 .66 .40 .24 .66 .19 .37 .31 .23

EPDs for January 2009 **Homo Polled Homo Black**

This homo black and polled sire adds weight at weaning and yearling. Look at his volume and rib with the lower birth weights being reported.

AMGV 849194

Born: 1/18/2003 Semen: \$20

Black Purebred

Quality Grade		QG GPD	
0	0		
Tenderness		T GPD	
2	0	0	-0.698
Feed Efficiency		FE GPD	

VAA LEACHMAN NEW DAY 205B
 MRCO NEW DIRECTION 905
 MRCO CADILLAC LADY 541E

KCF BENNETT IDEAL G182
 OZZ IDEAL SWEET 56L
 OZZ JET MILADY 150G

PCCI Nitro 3161N



AMGV 848974
Born: 4/9/2003 Semen: \$20

CE	BW	WW	YW	M	TM	GL	CED	SC	REA	MB
105	2.4	57	91	8	37	-1.5	106	0.2	0.14	-0.1
.31	.63	.52	.33	.16		.24	.13	.40	.26	.18

EPDs for January 2009 **Polled** **Black**

Spring 2005 New Sire Addition...2005 Reserve Division Champion IV Bull ir Denver.

Member of Pearson Cattle Co. Champion Pen of 3 Bulls Denver 2004.

Nursed powerful Black Knight/Paddy daughter with a 106 weaning ratio.

Two-time Denver Champion with that Extra burst of beef, butt and guts.

Black Purebred

Quality Grade	QG GPD
Tenderness	T GPD
Feed Efficiency	FE GPD

SLC FREEDOM 178F ET
TAU T G TY 313L
TAU MS SLEEPY 920J

MCJ RJ BLACK KNIGHT
PCCI MS KNIGHT 6102F
PCCI MS PADDY 976Y

PMG Pegasus 01P



AMGV 888814
Born: 1/9/2004 Semen: \$25

CE	BW	WW	YW	M	TM	GL	CED	SC	REA	MB
106	2	38	71	19	38	-0.9	108	-0.1	0.17	-0.12
.51	.79	.69	.47	.23		.70	.20	.50	.33	.24

EPDs for January 2009 **Homo Polled** **Black**

2005 Breeder's Choice Futurity Champion Bull - first semen available to the general public after Jan. 10, 2007. Topped 2005 National Gelbvieh Sale at \$33,000 and his first calf crop looks very impressive. Performance plus 96c pound 205 day weight off a superb first calf heifer and has a huge yearling scrotal circumference at 43 centimeters.

Black Purebred

Quality Grade	QG GPD
0	0
Tenderness	T GPD
2	0
	1
	-1.098
Feed Efficiency	FE GPD

VAA LEACHMAN NEW DAY 205B
SLC FREEDOM 178F ET
BB MISS 61Y

XXB DREW 565K
XXB MISS DREW 221M
XXB MISS DATELINE 805G

RAG Black Hawk 90N ET



AMGV 878371
Born: 10/13/2003 Semen: \$20

CE	BW	WW	YW	M	TM	GL	CED	SC	REA	MB
103	2.6	48	89	12	36	-1.8	105	0.4	0.26	-0.11
.36	.65	.34	.25	.22		.27	.20	.19	.33	.27

EPDs for January 2009 **Homo Polled** **Homo Black**

Black Hawk has been successfully shown across the country and has won many division championships. Very thick just like his former National Champion Dam. He posted a 857 WW & 1437 YW with 40+ cm scrotal. Homo polled and homo black.

Black Purebred

Quality Grade	QG GPD
Tenderness	T GPD
Feed Efficiency	FE GPD

CSG ELK BLACK PLD KENO 26E
ELK CK BRONCO 411G
ELK 411D

RKG MR WONDERFUL ET
RAG MISS WONDERFUL
ARO MS CARBON COPY B180P

RAG Mr Extra Wonderful ET



AMGV 650413
Born: 9/18/1998 Semen: \$20

CE	BW	WW	YW	M	TM	GL	CED	SC	REA	MB
102	3.1	36	59	20	38	0.7	102	0.3	0.13	-0.24
.68	.91	.87	.73	.68		.89	.55	.68	.79	.77

EPDs for January 2009 **Homo Polled** **Homo Black**

Extra Wonderful had a great show record - Champion Bull at the 2000 American Royal, Division Champion at the 1999 NAILE and Reserve division winner at the 2000 NWSS. A son was Senior Champion at the 2001 NWSS. The Dam of Extra Wonderful was the Grand Champion Female at the 1997 NWSS. Extra Wonderful will transmit muscle and correctness.

Black Purebred

Quality Grade	QG GPD
0	0
Tenderness	T GPD
2	0
	0
	-0.698
Feed Efficiency	FE GPD

KCF BENNETT PREMIER Z104
FHG FLYING H EXTRA 150D
FHG MS FHG NITE LADY 50A

RKG MR WONDERFUL ET
RAG MISS WONDERFUL
ARO MS CARBON COPY B180P

RCMP Y2K Sebastian



AMGV 1004693
Born: 2/22/2006 Semen: \$20

CE	BW	WW	YW	M	TM	GL	CED	SC	REA	MB
100	2.4	44	86	21	43	-1.8	105	0.4	0.08	0.02
.17	.28	.21	.13	.08		.15	.07	.11		

EPDs for January 2009 **Polled** **Black**

RCMP Y2K SEBASTIAN is one of the most unique sires in the Gelbvieh breed. Sebastian bridges the gulf between rock solid carcass genetics, true performance, and show stopping phenotype. He sports a near perfect, 5.7 frame score, is a total outcross to Echo, Extra 2106, Bronco, and Carolina Fortune and is backed a dam who is the right size and with a perfect udder. His quiet, calm disposition is a huge plus. If your program needs fresh, new genetics, with a solid "carcass punch", you can't ignore Y2K SEBASTIAN.

Black Purebred

Quality Grade	QG GPD
Tenderness	T GPD
Feed Efficiency	FE GPD

FHG VVFG FLYING H EXCLUSIV
FHG FLYING H EXCLUSIVE 041P
FHG FLYING H MS EXTRA 64M

JCGR BAR GT MACH ONE 54L
RCMP MISS REBECCA
JCGR BAR GT LADY LUCK 404L

RTC Atlas 712G



AMGV 580562
Born: 2/20/1997 Semen: \$20

CE	BW	WW	YW	M	TM	GL	CED	SC	REA	MB
110	-1.8	47	83	17	41	-0.6	112	0	0.05	-0.02
.87	.95	.93	.86	.82		.94	.74	.85	.90	.89

EPDs for January 2009 **Homo Polled** **Homo Black**

Atlas is a high trait leader for calving ease and weaning weight. He adds great phenotype with muscle and volume. Atlas' dam is a great maternal cc with a super udder. Atlas will add dollars with his black attractive progeny.

Black Purebred

GenesSTAR	Quality Grade		QG GPD
	0	0	2 10.58
	Tenderness		T GPD
	1	0	1 -0.749
Feed Efficiency		FE GPD	

BEA POLLED MIDNIGHT
TLR COCOA 35C
TLR MISS KAISER 449Y
KCF BENNETT PREMIER Z104
RTC 414D
RTC NUGGETTE 124A

RTRD Rough and Ready



AMGV 934316
Born: 2/6/2005 Semen: \$20

CE	BW	WW	YW	M	TM	GL	CED	SC	REA	MB
104	-1.1	50	86	3	28	-2.1	107	0.5	0.03	-0.14
.36	.61	.49	.36	.17		.45	.15	.35	.31	.23

EPDs for January 2009 **Homo Polled** **Homo Black**

Rough and Ready was a crowd favorite at the 2006 National Show. He showed in the same Winter Bull Calf Division as the National Champion Bull and was honored as the Reserve Winter Bull Calf Champion. Young sire with unlimited genetic potential from one super proven cow family. Look at the excellent pedigree, very correct in type, lower birth plus homo black and polled.

Black Purebred

GenesSTAR	Quality Grade		QG GPD
	0	0	
	Tenderness		T GPD
	2	0	0 -0.698
Feed Efficiency		FE GPD	

FHG FLYING H EXTRA 150D
BTI EXTRA 2106K ET
BTI LADY GRANITE 2001E ET
ELK CK BRONCO 411G
DBRG FOXI ROXI 8N
DBRG MS FREEDOM 101L

RTRM Headline



AMGV 890202
Born: 2/4/2004 Semen: \$25

CE	BW	WW	YW	M	TM	GL	CED	SC	REA	MB
111	0.1	36	68	10	28	-2.2	107	0.8	0.03	-0.17
.47	.74	.57	.30	.16		.47	.15	.21	.32	.24

EPDs for January 2009 **Homo Polled** **Homo Black**

2006 Houston Stock Show Grand Bull. Unmatched pedigree: Extra Exposure, 2002 National Champion Bull and Miss Kali B, 2004 Reserve National Champion Female. Headline offers you tremendous muscle, dept of rib and flawless eye appeal.

Black Purebred

GenesSTAR	Quality Grade		QG GPD
	0	0	
	Tenderness		T GPD
	2	0	0 -0.698
Feed Efficiency		FE GPD	

FHG FLYING H EXTRA 150D
JRI EXTRA EXPOSURE 285L71 ET
JRI MS POLLED SWEETIE 285C6
BTI EXTRA 2106K ET
BTI MISS KALI B 2126M
BTI MISS KALI 2005K

RTRT Solution



AMGV 979817
Born: 1/25/2006 Semen: \$20

CE	BW	WW	YW	M	TM	GL	CED	SC	REA	MB
102	0.4	44	77	9	31	-3.1	107	0.4	0	-0.14
.36	.62	.38	.19	.15		.45	.13	.16		

EPDs for January 2009 **Homo Polled** **Homo Black**

2007 Breeder's Choice Futurity Campion Bull in Denver. Incredible low birth (79 BW) to growth (864 WW) spread off a super first calf heifer. Solution's first calf crop produced the 2008 Nile Champion Female and this beauty topped the Montana Gelbvieh Association's State Sale. Semen on Breeder Choice Futurity Champion Bulls is held off the open market for 2 years so th marks the first release of this powerful champion.

Black Purebred

GenesSTAR	Quality Grade		QG GPD
	0	0	
	Tenderness		T GPD
	2	0	0 -0.698
Feed Efficiency		FE GPD	

FHG FLYING H EXTRA 150D
BTI EXTRA 2106K ET
BTI LADY GRANITE 2001E ET
XXB TITUS 880K
DARC P401
SLGB MISS POWER LINE

SPUR Beretta 703G



AMGV 594663
Born: 9/20/1997 Semen: \$20

CE	BW	WW	YW	M	TM	GL	CED	SC	REA	MB
101	2.3	41	69	21	42	-4.6	105	0.6	0.25	-0.34
.74	.92	.88	.78	.73		.88	.63	.77	.85	.83

EPDs for January 2009 **Homo Polled** **Black**

Beretta is an impressive individual having been selected the 1999 Breeders Choice Futurity Champion Bull at the Reserve Western Stock Show. His progeny are just as impressive with great structure and disposition to go wit tremendous eye appeal. Beretta has made outstanding females for many years.

Black Purebred

GenesSTAR	Quality Grade		QG GPD
	0	0	
	Tenderness		T GPD
	1	0	1 -0.749
Feed Efficiency		FE GPD	

ATM TEJAS ROLLS ROYCH 868
JEB POLLED GIZMO 17Z
JEB MS. SENSATION 31X
BTI BACKDRAFT 2079B ET
SPUR VANESSA 19E ET
ARO MS SANDHILLER Z011P

SPUR Kings Ransome 901J ET

CE	BW	WW	YW	M	TM	GL	CED	SC	REA	MB
101	1.2	48	91	19	43	-3.5	103	0.4	0.35	-0.06
.64	.88	.80	.54	.55		.76	.49	.38	.63	.59

EPDs for January 2009 **Homo Polled** **Homo Black**

The pedigree says: good females are on the way. The lower birth to great growth is adding to this homo black and polled sires ability to produce outstanding progeny.



AMGV 651478

Born: 1/21/1999 Semen: \$25

Black Purebred			
Quality Grade	QG GPD		
0	1		
Tenderness	T GPD		
1	0	1	-0.749
Feed Efficiency	FE GPD		

GKT BOO BOO 155E
GKT BUD 11G
GKT KATIE

BTI BACKDRAFT 2079B ET
SPUR VANESSA 19E ET
ARO MS SANDHILLER Z011P

TLR Cocoa 35C

CE	BW	WW	YW	M	TM	GL	CED	SC	REA	MB
99	1	55	103	24	52	-0.9	108	0.9	0.1	0.07
.82	.95	.93	.87	.86		.93	.79	.85	.92	.92

EPDs for January 2009 **Polled** **Black**

Cocoa has continued to be one of the more popular sires. The 1995 NWSS National Champion Bull has proven to have calving ease, great growth and add eye appeal to any program. This highly proven bull sires muscle, style, and correctness.



AMGV 405990

Born: 3/1/1993 Semen: \$15

Black Purebred			
Quality Grade	QG GPD		
0	0	0	2
10.58			
Tenderness	T GPD		
0	0	1	-0.4
Feed Efficiency	FE GPD		

LNR TRAITMAKER
BEA POLLED MIDNIGHT
BEA 411S

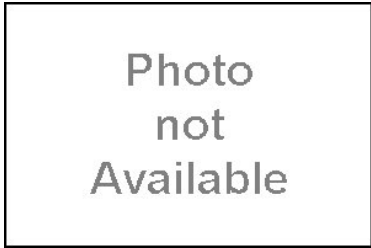
LNR KAISER
TLR MISS KAISER 449Y
TLR MS WITCHCRAFT 37W ET

WFA Flying H Atlas 101N

CE	BW	WW	YW	M	TM	GL	CED	SC	REA	MB
103	2.7	64	107	15	47	-0.4	109	0.5	0.09	-0.07
.42	.73	.60	.43	.22		.52	.21	.47	.45	.40

EPDs for January 2009 **Homo Polled** **Homo Black**

Homozygous black, homozygous polled purebred. Awesome birth to growth spread - 85 birth, 864 weaning weight with a 1,421 yearling weight. Calving ease reports have been excellent. 2 Stars Tenderness. Line-bred calving ease genetics with unbelievable growth.



AMGV 866825

Born: 1/16/2003 Semen: \$25

Black Purebred			
Quality Grade	QG GPD		
0	0		
Tenderness	T GPD		
2	0	0	-0.698
Feed Efficiency	FE GPD		

TLR COCOA 35C
RTC ATLAS 712G
RTC 414D

KCF BENNETT BONUS F95
WFA MISS BONUS 82L
WFA FARIS MISS ROSEBUD 75J

XXB Drew 565K

CE	BW	WW	YW	M	TM	GL	CED	SC	REA	MB
106	-0.3	35	69	24	42	-1.3	110	1.4	0.1	0.08
.78	.93	.89	.79	.70		.90	.60	.76	.85	.84

EPDs for January 2009 **Homo Polled** **Homo Black**

This homozygous black, homozygous polled 2001 Breeder's Choice Futurity Champion Bull is proving to be one of the best calving ease sires in the breed. Drew's dam is truly one of the black polled power females in the breed with a 118 weaning weight ratio, 117 yearling weight ratio and excellent teat/udder quality. The acceptance for Drew progeny across the breed has been sensational and his sons perform fantastic on gain test.



AMGV 699882

Born: 1/7/2000 Semen: \$20

Black Purebred			
Quality Grade	QG GPD		
0	0	0	1
5.29			
Tenderness	T GPD		
2	0	0	-0.698
Feed Efficiency	FE GPD		

FHG FLYING H CADILLAC 184C
GKT BOO BOO 155E
CCD X55

EVE MR BEAU JANGLES 308B
EGL G565
EGL D594

XXB Titus 880K

CE	BW	WW	YW	M	TM	GL	CED	SC	REA	MB
113	-2.5	35	66	22	40	-2.7	110	0.3	0.13	-0.19
.63	.86	.78	.56	.38		.78	.30	.51	.57	.52

EPDs for January 2009 **Polled** **Black**

Titus is the sire of the 2004 Breeder's Choice Futurity Champion as well as the Futurity Runner-Up. He's stamping his progeny with a great profile on an extra sound structure. Note the good calving ease numbers on Titus. Look for more outstanding progeny to appear out of this outstanding sire of champions.



AMGV 745160

Born: 12/28/2000 Semen: \$20

Black Purebred			
Quality Grade	QG GPD		
0	1		
Tenderness	T GPD		
2	0	0	-0.698
Feed Efficiency	FE GPD		

VAA LEACHMAN NEW DAY 205B
MRCO NEW DIRECTION 905
MRCO CADILLAC LADY 541E

CTR ECHO 575E
DFW MISS ECHO J880
DFW TEASER

BTBR Mr Black Cross 3002N ET



CE	BW	WW	YW	M	TM	GL	CED	SC	REA	MB
101	-0.5	44	96	16	38	-2.7	104	0.4	-0.12	0.1
.47	.84	.77	.62	.31		.65	.21	.47	.57	.52

EPDs for January 2009 **Hetero Polled** **Homo Black**

Large spread birth to growth. A balancer with good from both worlds. 1/2 interest sold for \$21,000 through the Seedstock Plus Program.

AMGV 848137

Born: 2/8/2003 **Semen: \$18**

Balancer 50%

GeneStar	Quality Grade		QG GPD	
	0	0		
	Tenderness		T GPD	
	2	0	0	-0.698
Feed Efficiency		FE GPD		

B/R NEW DESIGN 036
 BON VIEW NEW DESIGN 1407
 BON VIEW PRIDE 664
 ELK CK BRONCO 411G
 BTBR MS DOLLY 1211L
 BTBR MS BLACK CROSS 4116D

Buck 's Carolina Rock'n 251L



CE	BW	WW	YW	M	TM	GL	CED	SC	REA	MB
105	-3.4	35	72	15	33	-3.7	107	0.6	0.53	0.08
.44	.76	.64	.39	.22		.61	.15	.36	.53	.50

EPDs for January 2009 **Homo Polled** **Homo Black**

Look at the low birth EPD and a pedigree for great females.

AMGV 794476

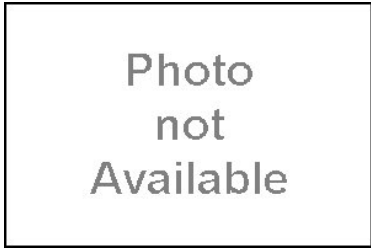
Born: 11/25/2001 **Semen: \$18**

Balancer 50%

GeneStar	Quality Grade		QG GPD	
	Tenderness		T GPD	
Feed Efficiency		FE GPD		

PARAMONT AMBUSH 2172
 ROCKN D AMBUSH 1531
 MS BLACKCAP BAND OF R D 130
 CTR ECHO 575E
 JBOB 2417J ET
 JBOB MISS 92C

CTR About Time 5548R



CE	BW	WW	YW	M	TM	GL	CED	SC	REA	MB
106	1.1	45	92	27	50	-1.2	105	0.4	0.04	0.08
	.35	.29	.24	.16						

EPDs for January 2009 **Polled** **Black**

Maternal brother to CTR Sandman 6523S but with more maternal. Great cow family with flawless dam. 198L has produced three sale toppers for Cedar Top Ranch. 5548 will add length, fix dispositions and structural problems.

AMGV 971415

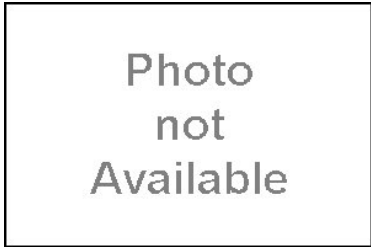
Born: 4/24/2005 **Semen: \$20**

Balancer 50%

GeneStar	Quality Grade		QG GPD	
	Tenderness		T GPD	
Feed Efficiency		FE GPD		

SITZ TRAVELER 8180
 SITZ ALLIANCE 6595
 SITZ BARBARAMERE JET 2698
 JBOB CAROLINA CPR
 CTR 198L
 CTR CEDAR TOP'S 344C

CTR Benchmark 5509R



CE	BW	WW	YW	M	TM	GL	CED	SC	REA	MB
104	0.6	40	79	21	41	-1.4		0.2	0.18	0.01
.16	.42	.31	.16	.07		.24		.04		

EPDs for January 2009 **Polled** **Homo Black**

Benchmark is a calving ease bull. His first progeny are exciting as they are right in kind. Produced top bulls at Cedar Top Ranch and Thorstonsens in 2008. Moderate thick and wide based describe the progeny with calving ease to boot.

AMGV 971247

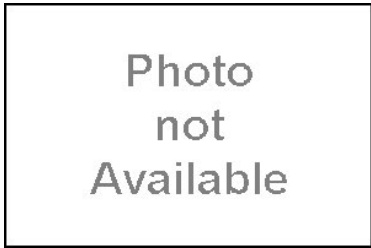
Born: 3/27/2005 **Semen: \$15**

Balancer 50%

GeneStar	Quality Grade		QG GPD	
	Tenderness		T GPD	
	2			
Feed Efficiency		FE GPD		

C A FUTURE DIRECTION 5321
 STEVENSON BENCHMARK N190
 STEVENSON ELGA L706
 CTR ECHO 093K
 LAMM NINE OF DIAMONDS 331N
 XXB MISS BEAU DILLON 031K

CTR Clipper 4818P



CE	BW	WW	YW	M	TM	GL	CED	SC	REA	MB
0.3	40	86	22	42		-1.6		0.6	0.07	0.1
.35	.28	.19	.10			.01				

EPDs for January 2009 **Double Polled** **Homo Black**

Growth, fleshing ability and a stack of positive carcass in his pedigree. Balanced trait bull. Use this lower % bull to increase fleshing ability in your cow herd. Will add much improved carcass. 38%

AMGV 920982

Born: 4/30/2004 **Semen: \$15**

Balancer 38%

GeneStar	Quality Grade		QG GPD	
	Tenderness		T GPD	
Feed Efficiency		FE GPD		

ALBERDA TRAVELER 416
 J D ALBERDA CLIPPER 019
 J D MISSY CHLOE 8422
 DBC BLACK DIAMOND 96C
 CTR 9009J
 CTR 6102F

CTR Front Page 5507R

CE	BW	WW	YW	M	TM	GL	CED	SC	REA	MB
-1.8	37	75	17	36	-1.3	103	0.2	0.15	0.01	
.35	.28	.20	.08		.01	.01				

EPDs for January 2009 **Polled** **Homo Black**

Proven calving ease bull. Very safe for virgin heifers. Progeny are very attractive and will excel in the show ring. Use this bull to clean up cattle and add style like no other balancer.

Photo
not
Available

AMGV 971234

Born: 3/9/2005 **Semen:\$20****Balancer 50%**

	Quality Grade		QG	GPD
	Tenderness		T GPD	
	Feed Efficiency		FE GPD	

CONNELLY FOREFRONT
CONNELLY FRONT PAGE 0228
EBONY LIT OF CONANGA 840

MCJ RJ HIGHLIGHT 732H
CTR 320N
CTR 900J

CTR Front Page 765T

CE	BW	WW	YW	M	TM	GL	CED	SC	REA	MB
-1.9	39	78	18	38	-1.1	103	0.3	0.14	0	
I+										

EPDs for January 2009 **Polled** **Black**

Popular balanced trait bull at the 2009 Cedar Top Ranch bull sale. Tremendous producing dam. 765T will add muscle, shape and correctness to progeny.

Photo
not
Available

AMGV 1086273

Born: 5/4/2007 **Semen:\$20****Balancer 50%**

	Quality Grade		QG	GPD
	Tenderness		T GPD	
	Feed Efficiency		FE GPD	

CONNELLY FOREFRONT
CONNELLY FRONT PAGE 0228
EBONY LIT OF CONANGA 840

DCG POWERSTROKE G92
DFW TWILIGHT
DJS 27H

CTR Good Night 715T

CE	BW	WW	YW	M	TM	GL	CED	SC	REA	MB
102	-1.6	39	79	20	40	-1.5		0.3	0.06	0.01
	I+	I+	I+							

EPDs for January 2009 **Homo Polled** **Homo Black**

Topped the 2009 Cedar Top Ranch bull sale at \$9,800.00. A proven, time tested cow family. Generations stacked for elite females with do ability, volume, femininity and super udders. A bull that covers all bases.

Photo
not
Available

AMGV 1086538

Born: 3/29/2007 **Semen:\$20****Balancer 50%**

	Quality Grade		QG	GPD
	Tenderness		T GPD	
	Feed Efficiency		FE GPD	

EGR ELLISON 608F
CTR GOOD NIGHT 4743P
CTR SUSAN 2907

SITZ ALLIANCE 6595
CTR POLL STAR 5160E
CTR 028K

CTR Good Night 728T

CE	BW	WW	YW	M	TM	GL	CED	SC	REA	MB
103	-1.6	33	72	13	30	-1.7		0.6	0.07	0.02
	I+	I+	I+							

EPDs for January 2009 **Homo Polled** **Homo Black**

If you need moderation this is the bull. He is a truck. Admired by many commercial cattlemen seeking wide based genetics in a calving ease package. Elite cow family.

Photo
not
Available

AMGV 1086575

Born: 4/5/2007 **Semen:\$20****Balancer 50%**

	Quality Grade		QG	GPD
	Tenderness		T GPD	
	Feed Efficiency		FE GPD	

EGR ELLISON 608F
CTR GOOD NIGHT 4743P
CTR SUSAN 2907

CTR TRAVELER 0907K
CTR HEROINE 5173R
CTR HEROINE 2130M

CTR Kingpin 4751P

CE	BW	WW	YW	M	TM	GL	CED	SC	REA	MB
109	-0.1	40	81	18	38	-1.6	105	0.3		
.20	.33	.27	.22	.13		.15	.10	.14		

EPDs for January 2009 **Homo Polled** **Homo Black**

Daughters are calving with tremendous udders and milk flow. They are wide based, moderate females that are the efficient kind.

Photo
not
Available

AMGV 921164

Born: 4/8/2004 **Semen:\$15****Balancer 50%**

	Quality Grade		QG	GPD
	Tenderness		T GPD	
	Feed Efficiency		FE GPD	

KCF BENNETT IDEAL G182
KCF BENNETT KINGPIN K403
KCF MISS BONUS H321

C T R RIGHT TIME 4246
C T R BLACK CONTENT 0957
C T R BLACK CONTENT 3246

CTR Marbling 2401M

CE	BW	WW	YW	M	TM	GL	CED	SC	REA	MB
109	-2.5	45	105	19	42	-0.7	103	0.4	0.1	0.12
.41	.71	.61	.32	.20		.41	.17	.15		

EPDs for January 2009 **Polled** **Homo Black**

Low birth coupled with scale crushing weaning and yearling weights. He sires long, loose, free moving big rough country covering bulls and females that are moderate at first calf with incredible udders. 2401 stems from a Dam of distinction cow family that never misses. Use this bull if balanced traits from birth to yearling are what you need. No other proven Balancer bull can put this EPD tabulation together. A no miss calving ease bull used for years on virgin heifers.

Balancer 50%

Genesis STAR	Quality Grade	QG	GPD
	Tenderness		T GPD
	Feed Efficiency		FE GPD

D H D TRAVELER 6807
S S TRAVELER 6807 T510
S S MISS HI SPADE A114

JBOB CAROLINA CPR
CTR 012K
CTR CEDAR TOP'S 3019C

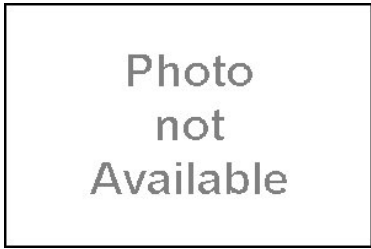


Photo
not
Available

AMGV 825867

Born: 3/1/2002 Semen: \$15

CTR Sandman 6523S

CE	BW	WW	YW	M	TM	GL	CED	SC	REA	MB
1.1	43	82	20	42	-0.5					
.31	.24	.18	.09							

EPDs for January 2009 **Double Polled** **Black**

Without a doubt, the most impressive Balancer bull you see. Everyone who see Sandman immediately calls about semen. Time tested proven cow family. Dam CTR198L has produced three sale toppers for Cedar Top Ranch.

Balancer 50%

Genesis STAR	Quality Grade	QG	GPD
	Tenderness		T GPD
	Feed Efficiency		FE GPD

VERMILION DATELINE 7078
SITZ TRADITION RLS 8702
R L S EISA EVERGREEN 5018

JBOB CAROLINA CPR
CTR 198L
CTR CEDAR TOP'S 344C

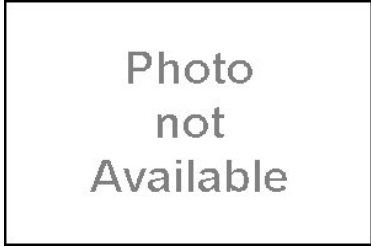


Photo
not
Available

AMGV 1030628

Born: 4/18/2006 Semen: \$50

CTR Tomahawk 3715N

CE	BW	WW	YW	M	TM	GL	CED	SC	REA	MB
103	0.5	44	89	22	44	-1.1	97	0.6	0.3	0.16
.34	.71	.59	.46	.18		.21	.14	.44		

EPDs for January 2009 **Homo Polled** **Red**

3715 was the top bull in the 03 calf crop. A planned mating of one of the most proven cow lines in the Gelbvieh breed with almost perfect carcass and feedlot data. The sire is also the same on the Red Angus side of the equation with more data yet. Buy the sons with confidence if you sell cattle on a grid or you feed out your cattle in a feedlot. Considered a top sire for ERT's (Economic Relevant Traits).

Balancer 50%

Genesis STAR	Quality Grade	QG	GPD
	Tenderness		T GPD
	Feed Efficiency		FE GPD

VC BUF CRK CHF 824-1658
BUF BFCK CHEROKEE CNYN 4912
MRM MRM 1431 8611 9109

DBC BLACK DIAMOND 96C
CTRG 527E
VHG T124



AMGV 887864

Born: 3/27/2003 Semen: \$20

CTR Traveler 0907K

CE	BW	WW	YW	M	TM	GL	CED	SC	REA	MB
94	2.4	48	88	5	29	-1.5	101	1.4	0.06	0.07
.53	.87	.81	.65	.41		.67	.37	.46	.52	.46

EPDs for January 2009 **Homo Polled** **Homo Black**

Transmits, muscling, capacity, fleshing ability at the highest level. Nicknamed "Muscle" for his powerful phenotype. Simply, the most powerful Gelbvieh and/or Balancer bull. Words are not sufficient to describe the cattle. "Muscle" will be around for years to come and a household name among commercial producers wanting Balancers. 0907K cattle excel like no other on IMF scans.

Balancer 50%

Genesis STAR	Quality Grade	QG	GPD
	Tenderness		T GPD
	Feed Efficiency		FE GPD

D H D TRAVELER 6807
G D A R TRAVELER 011
G D A R PRIMROSE LADY 8209

MCJ BLACK HUSKER
KNS CTR 414D
JNE MISS JAY'S BLACK JACKIE



AMGV 721347

Born: 3/10/2000 Semen: \$20

CTR Traveler 3718N

CE	BW	WW	YW	M	TM	GL	CED	SC	REA	MB
98	1.1	40	.77	9	29	-1.2	101	1	0.03	.02
.21	.36	.29	.22	.14		.21	.12	.11		

EPDs for January 2009 **Homo Polled** **Black**

A planned mating that looks awesome. Carcass and cow longevity are tremendous.

Balancer 50%

Genesis STAR	Quality Grade	QG	GPD
	Tenderness		T GPD
	Feed Efficiency		FE GPD

G D A R TRAVELER 011
CTR TRAVELER 0907K
KNS CTR 414D

CTRG RED DOG 50E
CTR 8148H

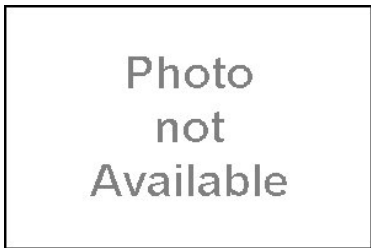


Photo
not
Available

AMGV 887873

Born: 3/28/2003 Semen: \$15

EBY Western Hauler 028S



CE BW WW YW M TM GL CED SC REA MB
 107 -1.1 36 78 14 32 -0.8 103 0.4 0.14 -0.01
 .15 .31 .24 .11 .09 .08 .06 .06 .13 .10

EPDs for January 2009 **Homo Polled Homo Black**

2008 National Champion Balancer Bull at the Denver Stock Show. Pedigree features breed-leading Gelbvieh and Angus genetics. Incredible fleshing ability, depth and muscle shape in a moderate framed flawless made package. His excellent testicular development spells fertility plus sons and daughters.

AMGV 1007861

Born: 4/5/2006 Semen: \$25

Balancer 50%

GeneSTAR	Quality Grade		QG GPD	
	Tenderness		T GPD	
Feed Efficiency		FE GPD		

JRI EXTRA EXPOSURE 285L71 E
 JRI GREAT WESTERN 254N68 ET
 JRI MS P BLACKBERRY 254K55E

RITO 616 OF 4B20 6807
 LYONS DELIA BEAUTY 2028
 LYONS DELIA BEAUTY 0301

EGL Old Iron Nuts S842



CE BW WW YW M TM GL CED SC REA MB
 111 -1.3 38 74 16 35 -0.3 105 0.3 0.15 0.04
 .24 .51 .39 .19 .08 .33 .05 .24 | |

EPDs for January 2009 **Homo Polled Homo Black**

Balancer 50%

GeneSTAR	Quality Grade		QG GPD	
	Tenderness		T GPD	
Feed Efficiency		FE GPD		

EGL NORTHERN EXPOSURE J17
 EGL NORTHERN WIND P068 ET
 EGL OLIVIA J811 ET

NORTHERN IMPROVEMENT 448
 EGL MISS IMPROVEMENT 3266
 EGL 0306

AMGV 1005445

Born: 3/13/2006 Semen: \$20

EGL Tenderloin N407



CE BW WW YW M TM GL CED SC REA MB
 109 -3.3 44 98 18 40 -2.5 106 0.4 0.04 0.18
 .53 .78 .68 .45 .17 .64 .16 .36 .51 .48

EPDs for January 2009 **Homo Polled Homo Black**

Tenderloin's individual low birth to growth spread was phenomenal. One of the top IMF bulls in the Eagle Pass Ranch's '04 Bull Sale with a 119 IMF ratio and check-out his impressive GeneSTAR DNA for Tenderness.

Balancer 50%

GeneSTAR	Quality Grade		QG GPD	
	0	0	2	1
	Tenderness		T GPD	
	2	1	1	-1.447
Feed Efficiency		FE GPD		

BON VIEW NEW DESIGN 1407
 EGL TARGET 1148
 EGL 9420

TLR COCOA 35C
 EGL L280
 EGL H228

AMGV 855307

Born: 2/25/2003 Semen: \$20

GGGE 3G Smoke N' Mirrors



CE BW WW YW M TM GL CED SC REA MB
 105 -1.3 36 82 19 37 -0.9 105 0.1 0.13 0.02
 .14 .43 .28 .16 .09 .22 .06 .02 | |

EPDs for January 2009 **Homo Polled Homo Black**

Smoke N' Mirrors brings a new dimension to the Balancer breed with his unsurpassed depth of rib, volume and capacity in one flawless package. He's wide-based, sound-footed with excellent testicular development. 2006 American Royal Reserve Grand Balancer Bull.

Balancer 25%

GeneSTAR	Quality Grade		QG GPD	
	0	0		
	Tenderness		T GPD	
	2	0	2	-1.498
Feed Efficiency		FE GPD		

SITZ TRAVELER 8180
 S A V 8180 TRAVELER 004
 BOYD FOREVER LADY 8003

O C C ANCHOR 771A
 GGGR 3G COWGIRL 351N
 GGGR 3G COOKIE 421D

AMGV 986778

Born: 2/5/2006 Semen: \$30

GKG Harley



CE BW WW YW M TM GL CED SC REA MB
 105 -1.5 29 64 20 35 -2.8 106 0.4
 .36 .63 .45 .15 .10 .42 .08 .09

EPDs for January 2009 **Polled Black**

Harley is the most exciting young herd bull that's ever graced the pastures of Golden Image cattle. He gained 5 pound per day from weaning to yearling and turned in a 1500 adj. YW on a 6.3 frame. His scan data revealed a 19 square inch ribeye. Harley offers multiple mating options to produce black Purebred and Balancer calves!

Balancer 75%

GeneSTAR	Quality Grade		QG GPD	
	Tenderness		T GPD	
Feed Efficiency		FE GPD		

SLC FREEDOM 178F ET
 GKG MR FREEDOM 206M ET
 GKG MISS B FORCE 708G

NORTHERN IMPROVEMENT 448
 GKG MS NI 312N
 GKG MS BLACK FORCE 147L ET

AMGV 937227

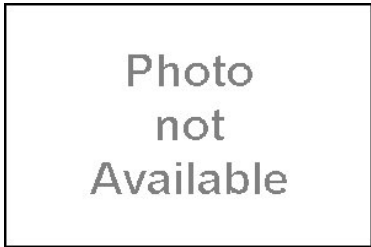
Born: 12/18/2004 Semen: \$30

JBOB Apache Warrior GC ET

CE BW WW YW M TM GL CED SC REA MB
 113 -3.3 28 62 22 36 -1.1 107 0.4 0.43 -0.02
 .33 .66 .53 .34 .14 .38 .11 .13 .22 .20

EPDs for January 2009 **Polled Black**

You can build superior bulls and females here. With proven Angus genetics and the famous Echo makes this a consistent package of attractive progeny



AMGV 806965

Born: 1/16/2002 Semen: \$20

Balancer 50%

GenesTAR	Quality Grade		QG GPD
	Tenderness		T GPD
Feed Efficiency		FE GPD	

PAPA OPTIMA 9818
 PAPA FORTE 1921
 PAPA ENVIOUS BLACKBIRD 8833

CTR ECHO 575E
 JBOB 2417J ET
 JBOB MISS 92C

JBOB Carolina 5003N ET

CE BW WW YW M TM GL CED SC REA MB
 97 1.3 57 104 26 55 -2.4 104 0.8 0.38 -0.06
 .38 .67 .53 .22 .17 .24 .12 .13 .30 .23

EPDs for January 2009 **Homo Polled Homo Black**

Carolina 5003N is a great Balancer bull sired by the great Bushwacker bull who adds depth, fleshing ability and good carcass merit to his progeny. Bushwacker daughters are some of the best females around. The mating with this great JBOB Echo daughter produced a great one. Bushwacker with Echo puts the top genetics together making for great females less frame and a very attractive package.



AMGV 880418

Born: 8/22/2003 Semen: \$20

Balancer 50%

GenesTAR	Quality Grade		QG GPD
	0	0	
	Tenderness		T GPD
	2	0	0
Feed Efficiency		FE GPD	

PARAMONT AMBUSH 2172
 B C C BUSHWACKER 41-93
 R C ANITA T BANDO 918903

CTR ECHO 575E
 JBOB 3298K
 JBOB MISS 92C

JBOB Carolina 5423P ET

CE BW WW YW M TM GL CED SC REA MB
 104 -1.4 32 76 26 42 -1.7 103 0.8 0.36 -0.1
 .42 .74 .63 .37 .18 .65 .15 .37 .32 .24

EPDs for January 2009 **Homo Polled Homo Black**

The complete package young Balancer sire that sold as the 2nd high selling bull in the Jbob Farms 2005 Bull Sale. His incredible dam, Jbob 3298K, topped the Jbob Farms Complete Dispersal at \$14,500. Awesome low birth to growth individual that scanned a 15.4 inch yearling ribeye and ratioed 12: on yearling IMF. Leachman Right Time with Echo writes another win win to produce the keeping kind.



AMGV 925186

Born: 8/18/2004 Semen: \$20

Balancer 50%

GenesTAR	Quality Grade		QG GPD
	1	0	
	Tenderness		T GPD
	2	1	1
Feed Efficiency		FE GPD	

N BAR EMULATION EXT
 LEACHMAN RIGHT TIME
 LEACHMAN ERICA 0025

CTR ECHO 575E
 JBOB 3298K
 JBOB MISS 92C

JBOB Carolina 5707R ET

CE BW WW YW M TM GL CED SC REA MB
 99 0.8 43 91 23 45 -1.6 104 0.5 0.16 -0.1
 .28 .54 .45 .27 .15 .14 .11 .18 | |

EPDs for January 2009 **Homo Polled Homo Black**

Carolina 5707R offers you that ultimate Balancer Genetic package. His sire Connealy Lead On is one of the top proven curvebenders in the Angus breed with over 10,000 progeny on record. 5707R's illustrious dam JBOB 2308J ET was the record high selling female in the J Bob Farms Complete Dispersal Sale. Maternal plus genetics with that added boost of beef, butt and guts.



AMGV 931060

Born: 1/1/2005 Semen: \$20

Balancer 50%

GenesTAR	Quality Grade		QG GPD
	Tenderness		T GPD
Feed Efficiency		FE GPD	

CONNELY LEADTIME
 CONNEALY LEAD ON
 ELIGENCE PLUS OF CONANGA

CTR ECHO 575E
 JBOB 2308J ET
 LDL LL MISS AUGUST

JBOB J-Bob 4665M ET

CE BW WW YW M TM GL CED SC REA MB
 98 1.8 47 89 23 47 -1.4 102 1.1 0.12 -0.17
 .42 .76 .67 .47 .21 .60 .16 .34 .53 .50

EPDs for January 2009 **Homo Polled Homo Black**

4665M is an awesome 1/2 blood Balancer out of Angus maternal phenom, Right Time, who's one of the best udder and flesh improvers in the breed. Expect the best of both worlds when you sample 4665M this year.



AMGV 840675

Born: 11/28/2002 Semen: \$25

Balancer 50%

GenesTAR	Quality Grade		QG GPD
	0	0	
	Tenderness		T GPD
	0	1	1
Feed Efficiency		FE GPD	

N BAR EMULATION EXT
 LEACHMAN RIGHT TIME
 LEACHMAN ERICA 0025

CTR ECHO 575E
 JBOB 2409J ET
 JBOB MISS 92C

JDPD Sportspage 450T



AMGV 1034825
Born: 3/14/2007 Semen: \$25

CE BW WW YW M TM GL CED SC REA MB
107 0 38 78 14 33 -1.1 105 0.4 0.01 -0.06
| .29 .20 .12 .06 | | | | |

EPDs for January 2009 **Multiple Polled** **Multiple Blk**

Powerful '08 Louisville Reserve grand Balancer Bull... currently being tester for the homozygous lack, homozygous polled convenience factors. Sportspage's sire Headline is emerging as one of the top sires in the Gelbvieh breed. Sportspage's paternal sister JDPD Sonador 46S swept '08 Reserve National Champion Female honors and another paternal sister JDPD Rumor Hat It 407U swept the Louisville Grand Female honors. Double-bred calving ease genetics equipped with a surplus of eye appear and pure beef.

Balancer 75%

Quality Grade	QG GPD
Tenderness	T GPD
Feed Efficiency	FE GPD

JRI EXTRA EXPOSURE 285L71 E
RTRM HEADLINE
BTI MISS KALI B 2126M

EGL SLEEP NIGHTS 2179
EGL SARA R450
EGL N066 ET

JRI Complete Package 27S2



AMGV 989062
Born: 1/25/2006 Semen: \$22

CE BW WW YW M TM GL CED SC REA MB
107 -2.6 43 91 23 45 -1.5 106 0.2 0.14 0
.01 .35 .29 .23 .10 .01 .01 | | |

EPDs for January 2009 **Multiple Polled** **Black**

JRI Complete Package is a low birth, super growth bull out of a first calf Fre Agent daughter. He posted a 76 BW, 792 WW, 1,480 YW, 39.2 cm yearling scrotal, 136 gain test ratio and 15.8 square inch yearling ribeye. This young sire shows promise for calving ease, good growth and eye appearance with correctness.

Balancer 50%

Quality Grade	QG GPD
Tenderness	T GPD
Feed Efficiency	FE GPD

C A FUTURE DIRECTION 5321
MORGANS DIRECTION 111 9901
MCC BARBIE 9901 5205 797

JRI PLD FREE AGENT 125J3
JRI MS SPECIAL AGENT 27P5
JRI 27Z4

JRI Curvender 285S22



AMGV 989086
Born: 1/29/2006 Semen: \$20

CE BW WW YW M TM GL CED SC REA MB
107 -1 46 94 22 45 -0.7 105 0.4 0.24 -0.04
.17 .42 .32 .23 .09 .11 .07 .06 | | |

EPDs for January 2009 **Multiple Polled** **Black**

This exciting young Balancer bull excels in all the Judd Ranch "Complete Package" traits. Eighty-four pound calving ease birth weight. Scalebusting 799 pound 205 day weight off a first calf heifer. Scale smashing 1,473 pound yearling weight. His 5.27 pound ADG ranked him third over-all of the entire 2006 spring calf crop. Curvender is well endowed in the scrotal department with his 39 centimeter yearling measurement and he also ranks as one of the top yearling ribeye bulls at 15.1 square inches. His first calf dam has future donor female written all over her and her dam, grandam, great grandam and great, great grandam are all current leading donor

Balancer 50%

Quality Grade	QG GPD
Tenderness	T GPD
Feed Efficiency	FE GPD

C A FUTURE DIRECTION 5321
MORGANS DIRECTION 111 9901
MCC BARBIE 9901 5205 797

JRI EXTRA EXPOSURE 285L71 E
JRI MS SUGAR SWEET 285P992E
JRI MS SHOW N TELL 285L89 ET

JRI Profit Agent 46N



AMGV 852366
Born: 3/6/2003 Semen: \$20

CE BW WW YW M TM GL CED SC REA MB
120 -6 32 77 15 31 -1.5 111 1 -0.16-0.12
.57 .76 .67 .49 .24 .70 .23 .51 .32 .23

EPDs for January 2009 **Homo Polled** **Diluter Free**

This homozygous polled, diluter free Balancer bull has really developed into one powerful individual. Profit Agent ranks among the breed leaders for low birth and his sons and daughters feature unbelievable depth of rib and fleshing ease.

Balancer 50%

Quality Grade	QG GPD
0 0	
Tenderness	T GPD
2 0 1	-1.098
Feed Efficiency	FE GPD

SLC FREEDOM 178F ET
JRI PLD FREE AGENT 125J3
JRI MS PLD GRAND PRIX 125G3

CPH GLACIER LOGAN 210
LACY LACY MISS LOGAN 46G
LACY LACY ANNA HW 16E

KCF Bennett N473



AMGV 890037
Born: 11/3/2003 Semen: \$20

CE BW WW YW M TM GL CED SC REA MB
108 -0.4 35 80 22 40 -0.4 108 0.1 0.19 0.06
.39 .79 .69 .56 .17 .70 .16 .52 .37 .29

EPDs for January 2009 **Multiple Polled** **Homo Black**

Bennett N473 is one of the most exciting young bulls ever raised at Knoll Crest Farms. His individual stats for modest birth/growth are incredible and he posted a 5.17 #ADG (130 gain test ratio) If you use curve bending genetics N473 will work. He transmits depth, volume and clean sheath in an attractive package.

Balancer 50%

Quality Grade	QG GPD
0 0	
Tenderness	T GPD
2 1 1	-1.447
Feed Efficiency	FE GPD

SITZ ALLIANCE 6595
K C F BENNETT TOTAL
EXT OF CONANGA 6790

KCF BENNETT E185
KCF MISS HIGAIN J302
KCF MISS BLACKJACK G243

KRT Lazy TV Second Class R87

CE	BW	WW	YW	M	TM	GL	CED	SC	REA	MB
110	-2.8	53	100	22	49	-3.5	1.9	0.32	0	
.42	.71	.61	.42	.13		.37	.48	.32	.23	

EPDs for January 2009 **Homo Polled** **Red**

Sire to Lazy TV Old School and 2009 Reserve Champion BHSS Gelbvieh Bull. 71 calves indexed 96 BW, 101 WW, 101 YW. Owned by Schafer Farms, Goodhue, MN, and Thorstenson Gelbvieh & Angus, Selby, SD.



AMGV 947498

Born: 2/23/2005 **Semen: \$18**

Balancer 50%

Genesis STAR	Quality Grade		QG GPD	
	Tenderness		T GPD	
Feed Efficiency		FE GPD		

BUF BFCK CHEROKEE CNYN 49
KRT LAZY TV CLASSIC M358
KRT K497

VC BUF CRK DYNAMICS 3820
KRT LAZY TV MS DYNAMICS L35
KRT LAZY TV J347

MCFG MCF Bruce Almighty 35P

CE	BW	WW	YW	M	TM	GL	CED	SC	REA	MB
103	0.3	47	87	19	43	-1.3	105	0.3	0.43	-0.02
.42	.70	.56	.40	.18		.40	.16	.21	.34	.24

EPDs for January 2009 **Homo Polled** **Homo Black**

2004 Popular NAILE Grand Champion, Billings, MT. Ten bull calves on 2007 Midland test are all above the group average! The only true outcross HP/HB Balancer bull on the market with proven sire and dam credentials. 7 lb is the average birth weight on 1st calf heifers.



AMGV 899675

Born: 1/8/2004 **Semen: \$20**

Balancer 75%

Genesis STAR	Quality Grade		QG GPD	
	Tenderness		T GPD	
Feed Efficiency		FE GPD		

R D R 1531 AMBUSH 1807
VRT LAZY TV BEETHOVEN K278
VRT LAZY TV H406

GKT BUD 11G
MCFG 41K ET
CTRG CEDAR TOP'S TIFFANY

McMinnville's Anchor (CMFS 628)

CE	BW	WW	YW	M	TM	GL	CED	SC	REA	MB
103	-1.3	41	81	17	38	-1.9	104	0.4	0.25	-0.11
.16	.40	.30	.21	.14		.11	.12	1	.21	.19

EPDs for January 2009 **Polled** **Black**



AMGV 971704

Born: 1/30/2006 **Semen: \$18**

Balancer 50%

Genesis STAR	Quality Grade		QG GPD	
	Tenderness		T GPD	
Feed Efficiency		FE GPD		

O C C ANCHOR 771A
PARTISOVER ANCHOR 948
PARTISOVER BURGESS 521

CTR ECHO 575E
JBOB 2408J ET
JBOB MISS 92C

MLH Goldrush Designer Genes

CE	BW	WW	YW	M	TM	GL	CED	SC	REA	MB
102	0.1	47	98	17	41	-1.3		0.2	0.04	0.07
.25	.58	.44	.13	.08		.34		.07	1	1

EPDs for January 2009 **Multiple Polled** **Homo Black**

A Maternal Brother to Straight Forward and your clear choice for semen on Balancer bull. There is added carcass merit here to add to good EPD's, homo black and a good pedigree.



AMGV 982492

Born: 2/1/2006 **Semen: \$25**

Balancer 50%

Genesis STAR	Quality Grade		QG GPD	
	0	1	0	1
	Tenderness		T GPD	
	2	2	2	-2.196
Feed Efficiency		FE GPD		

G T EXPO
ISU IMAGING Q 9111
SUMMITCREST PRIDE 351F

MLH GOLDRUSH VISA J40
MLH MISS GOLDRUSH M99
MLH MISS GOLDRUSH H9

MLH Goldrush Standard

CE	BW	WW	YW	M	TM	GL	CED	SC	REA	MB
112	-4.6	27	70	19	33	-2.7		-0.2	0.09	0.07
.31	.54	.43	.17	.11		.41		.07	1	1

EPDs for January 2009 **Homo Polled** **Homo Black**

Five star DNA... homozygous for 2 of the 3 tenderness genes. Incredible individual birth to growth spread... 73# birth weight/834# 205 day weight of first calf heifer. Cowman balanced EPD strength featuring top 4% low birth, top 20% weaning weight, top 10% yearling weight, top 30% total maternal and top 5% feedlot merit. Beef plus genetics featuring proven carcass merit on both sides of the pedigree.



AMGV 982519

Born: 1/17/2006 **Semen: \$20**

Balancer 50%

Genesis STAR	Quality Grade		QG GPD	
	0	0	0	2
	Tenderness		T GPD	
	2	1	2	-1.847
Feed Efficiency		FE GPD		

G A R PRECISION 1680
G A R US PREMIUM BEEF
G A R EXT 2928

RTC ATLAS 712G
MLH MISS GOLDRUSH P11
MLH MISS GOLDRUSH M75

MLH Levi S151 ET



AMGV 1012949
Born: 10/22/2006 Semen: \$20

CE	BW	WW	YW	M	TM	GL	CED	SC	REA	MB
104	0.2	40	82	12	32	-1.8	104	-0.1	-0.01	0.08
.01	.01	.01	.01	.01		.01	.01			

EPDs for January 2009 **Homo Polled Homo Black**

Cow power plus genetics featuring super donor MLH Miss Goldrush F42. Outstanding individual low birth to super growth spread... 76 BW/811 WW. Impressive phenotype with unmatched genotype. The total package with superior carcass DNA.

Balancer 50%

Quality Grade	QG GPD
Tenderness	T GPD
Feed Efficiency	FE GPD

TWIN VALLEY PRECISION E161
BR MIDLAND
BR ROYAL LASS 7036-19

BEA POLLED MIDNIGHT
MLH MISS GOLDRUSH F42
OVF 114A

MLH Wrangler R21



AMGV 935630
Born: 1/30/2005 Semen: \$20

CE	BW	WW	YW	M	TM	GL	CED	SC	REA	MB
104	-0.6	48	101	16	40	0	105	0	0	0.12
.32	.57	.46	.31	.15		.40	.10	.23		

EPDs for January 2009 **Homo Polled Homo Black**

Top selling bull in the '05 Goldrush Genetics Sale who excels in phenotype and genotype. Wrangler's carcass plus pedigree features the Angus breed' all-time great carcass sire, GAR Precision 1680, on the top side and the marbling breed leader, Goldrush Visa J40 on the maternal side. Wrangler should really increase your carcass dividends and note his super blend of calving ease, growth and maternal strength.

Balancer 50%

Quality Grade	QG GPD
0	0
Tenderness	T GPD
2	0
	1
Feed Efficiency	FE GPD
	-1.098

G A R PRECISION 1680
KCF BENNETT K503 ET
KCF MISS HALLMARK G264

MLH GOLDRUSH VISA J40
MLH MISS GOLDRUSH M80
MISS GOLDRUSH STOCKMAN J3

TAU Mr Krugerrand 70M 130P



AMGV 904079
Born: 2/20/2004 Semen: \$20

CE	BW	WW	YW	M	TM	GL	CED	SC	REA	MB
108	-0.6	53	101	16	43	-1.6	106	0.3	-0.09	0.06
.31	.71	.59	.29	.15		.25	.09	.11	.28	.19

EPDs for January 2009 **Homo Polled Homo Black**

Homozygous black, homozygous polled meat machine with flawless phenotype. Krugerrand is really adding mass, depth and soundness of structure to his progeny. Note Krugerrand's excellent widespread low birth superb growth ratios in his progeny report. Powerful cow family with Krugerrands dam sporting a calving ease 95 BW ratio, 108 WW ratio, and a 110 YW ratio.

Balancer 50%

Quality Grade	QG GPD
Tenderness	T GPD
Feed Efficiency	FE GPD

KRUGERRAND OF DONAMERE 4
TAU KRUGERRAND 70M
T G A PROMPTER 6807 557E

TLR COCOA 35C
TAU MS COCO 052KA 437D
TAU 437D

TAU Tuned In 55T



AMGV 1036181
Born: 2/5/2007 Semen: \$20

CE	BW	WW	YW	M	TM	GL	CED	SC	REA	MB
	1.1	53	103	16	43	-1.8				
	.33	.25	.10	.08						

EPDs for January 2009 **Hetero Polled Homo Black**

One of the deepest sides, heaviest muscled bulls in the 2008 National Balancer Pen Bull Show in Denver. Tuned In exhibits a big 'ol top and scanned a 17 yearling ribeye. Homozygous black, multiple polled Balancer genetics loaded with muscle, capacity, soundness and eye appeal.

Balancer 50%

Quality Grade	QG GPD
Tenderness	T GPD
Feed Efficiency	FE GPD

G A R GRID MAKER
TC GRID TOPPER 355
TC PRIDE 8067

SLC FREEDOM 178F ET
TAU MISS FREEDOM 306N
TAU MISS BLACKJACK 1101L

VRT Lazy TV Old School T231



AMGV 1039590
Born: 3/10/2007 Semen: \$30

CE	BW	WW	YW	M	TM	GL	CED	SC	REA	MB
106	-0.6	51	101	23	49	-2.7		1	0.36	0.01
.20	.36	.29	.23	.10		.14		.29	.15	.12

EPDs for January 2009 **Polled Red**

Old School is one of the most complete red Balancer bulls I've seen. Exceptional depth of rib, heavy muscled in a package that moves phenomenally. His dam, with 6 calves, posts a BW ratio of 98, WW ratio of 106 and YW ratio of 103. He is currently being retested with Igenity.

Balancer 50%

Quality Grade	QG GPD
Tenderness	T GPD
Feed Efficiency	FE GPD

KRT LAZY TV CLASSIC M358
KRT LAZY TV SECOND CLASS R8
KRT LAZY TV MS DYNAMICS L35

VC BUF CRK CHF 824-1658
KRT K318
KRT LAZY TV C181

XXB Midnight Cowboy 219N



AMGV 884080

Born: 12/25/2003 Semen: \$20

CE	BW	WW	YW	M	TM	GL	CED	SC	REA	MB
95	2.8	28	63	20	34	-1.7	102	0.3	-0.06	0.04
.31	.67	.55	.37	.13		.47	.12	.17	.39	.33

EPDs for January 2009 **Homo Polled** **Black**

2005 National Champion Balancer Bull. Homozygous polled by DNA test. Carcass plus B/R Midland son out of XXB Drew 565K's maternal sister. Tremendous volume, sound structured individual with super balance.

Balancer 50%

Quality Grade	QG GPD
Tenderness	T GPD
Feed Efficiency	FE GPD

TWIN VALLEY PRECISION E161
BR MIDLAND
BR ROYAL LASS 7036-19
RAG MR EXTRA WONDERFUL E
XXB MISS EX WONDERFUL219M
EGL G565

XXB Notorious 816S ET



AMGV 975244

Born: 1/1/2006 Semen: \$25

CE	BW	WW	YW	M	TM	GL	CED	SC	REA	MB
101	-1.8	16	53	25	33	-1.2	102	0.4	0.24	0.14
.17	.40	.34	.20	.12		.18	.10	.09	.20	.18

EPDs for January 2009 **Homo Polled** **Black**

Substance - unmatched. Marbling - 4.35 IMF/125 ratio. Leanness - .26 Rib Fat.

Balancer 50%

Quality Grade	QG GPD
0	0
Tenderness	T GPD
2	1
	-1.447
Feed Efficiency	FE GPD

BON VIEW NEW DESIGN 1407
G A R INTEGRITY
G A R PRECISION 1019
EVE MR BEAU JANGLES 308B
EGL G565
EGL D594

BTI Red Alert 2077K



AMGV 706072

Born: 2/27/2000 Semen: \$25

CE	BW	WW	YW	M	TM	GL	CED	SC	REA	MB
105	-0.1	46	82	-5	18	-5.9	108	-0.2	0.05	-0.19
.68	.90	.84	.69	.60		.84	.53	.66	.79	.76

EPDs for January 2009 **Homo Polled** **Red**

Red Alert is one of Freedom's most acclaimed sons. His dam is a tremendous brood cow, as she's extremely deep and bold sprung. Red Alert's calves look every bit as good as he does.

Red Purebred

Quality Grade	QG GPD
0	0
Tenderness	T GPD
2	0
	-1.098
Feed Efficiency	FE GPD

VAA LEACHMAN NEW DAY 205B
SLC FREEDOM 178F ET
BB MISS 61Y
POW BTI ZORRO 2143Z
BTI LADY GRANITE 2001E ET
KAB LADY GRANITE 432S

CRAN Buddy Boy T729



AMGV 1039981

Born: 2/20/2007 Semen: \$20

CE	BW	WW	YW	M	TM	GL	CED	SC	REA	MB
99	2.9	47	84	14	38	-2.3	102	0.6	0.23	-0.1
.21	.35	.28	.13	.08		.13	.06	.11	.13	.10

EPDs for January 2009 **Multiple Polled** **Red**

2008 Breeder's Choice Futurity Runner-up Bull. Tremendous low birth to super growth spread off a first calf heifer. Exceptionally thick, wide-made package sporting a 16 square inch yearling ribeye. Excellent combo of unmatched phenotype and carcass merit... Buddy Boy has an impressive Ingenuity report.

Red Purebred

Quality Grade	QG GPD
Tenderness	T GPD
Feed Efficiency	FE GPD

TKN BUSTER 8N
GKT BUDDY 7R
GKT 54G
TJB JAGERMEISTER 229M - ET
CRAN R251
CRAN JARED'S GIRL M201

DCSF Post Rock Top Brass ET



AMGV 652929

Born: 10/8/1998 Semen: \$20

CE	BW	WW	YW	M	TM	GL	CED	SC	REA	MB
109	0.6	38	77	29	48	0.3	106	1.4	-0.02	-0.08
.70	.90	.83	.68	.46		.84	.44	.65	.65	.60

EPDs for January 2009 **Homo Polled** **Diluter Free**

Homo polled and diluter free genetics in a very attractive sire. Maternal excellence - gorgeous udders and super easy fleshing.

Red Purebred

Quality Grade	QG GPD
0	0
0	0
0	1
5.29	
Tenderness	T GPD
1	0
0	0
-0.349	
Feed Efficiency	FE GPD
2	2
1	0
-3.2796	

KCF BENNETT HORIZON
KCF BENNETT PACESETTER A16
KCF MISS SELECT Y60
JGW 3R RED SUMMIT 76Y ET
JGW 3R PLD WILMA 215A
JGW 3R WILMA 323Y ET

DRJ Full Exposure



AMGV 850181
Born: 2/7/2003 Semen: \$25

CE	BW	WW	YW	M	TM	GL	CED	SC	REA	MB
105	1.2	56	97	14	42	-1.9	103	0.5	0.35	-0.19
.41	.74	.62	.44	.21		.54	.20	.51	.30	.22

EPDs for January 2009 **Homo Polled Red**

Homozygous polled, diluter free '04 & '05 division champion in Denver. Full Exposure daughter swept the '06 Louisville Heifer Futurity. Maternal grandam Phoebe sold for a breed record \$60,000 in the 2004 Eagle Pass Ranch Mature Cowherd Dispersal. A flawless phenotype on both sides of the pedigree.

Red Purebred

Quality Grade	QG	GPD
0	0	
Tenderness	T GPD	
2	0	1
		-1.098
Feed Efficiency	FE GPD	

FHG FLYING H EXTRA 150D
JRI EXTRA EXPOSURE 285L71 ET
JRI MS POLLED SWEETIE 285C6

SLC FREEDOM 178F ET
EGL FELICIA ET
EGL PHOEBE G374

EGL Fosters LO17 ET



AMGV 765517
Born: 3/2/2001 Semen: \$25

CE	BW	WW	YW	M	TM	GL	CED	SC	REA	MB
98	3.7	60	97	22	52	-3.4	104	0.1	0.2	-0.19
.58	.90	.84	.73	.59		.87	.47	.72	.81	.79

EPDs for January 2009 **Homo Polled Red**

Fosters topped the 2002 National Gelbvieh Sale at \$50,000 and his calves look great. His incredible dam is one of the all-time greats and Foster's ET full sisters won National Champion Female honors both in 2002 and 2003. Proven genetics with high growth, proven progeny champions and a good kind.

Red Purebred

Quality Grade	QG	GPD
0	0	
Tenderness	T GPD	
2	0	2
		-1.498
Feed Efficiency	FE GPD	

VAA LEACHMAN NEW DAY 205B
SLC FREEDOM 178F ET
BB MISS 61Y

EGL BULLSEYE C154 ET
EGL PHOEBE G374
AKR 349A

FHG Polled Pilgram 180A



AMGV 300788
Born: 3/24/1991 Semen: \$15

CE	BW	WW	YW	M	TM	GL	CED	SC	REA	MB
106	1.4	35	62	16	34	0.1	106	-0.1	-0.25	-0.14
.64	.85	.77	.61	.57		.76	.46	.62	.73	.70

EPDs for January 2009 **Homo Polled Red**

Polled Pilgram is a homozygous polled son of ABS's Flying Magnum. He is diluter free and his EPS's show good calving ease without sacrificing growth. Pilgram is very thick, deep ribbed sire who should be an outcross sire for many herds. Use this older proven diluter free calving ease sire.

Red Purebred

Quality Grade	QG	GPD
Tenderness	T GPD	
Feed Efficiency	FE GPD	

GAA MAGNUM P.I.
FHG FLYING MAGNUM 47X
HAY HAY MISS P48

MRB 023S ET
DFW MS SHADOW U78
DGM MS. GOLD STANDARD 26R

HFGC GIP Extra Hot P60



AMGV 897101
Born: 5/20/2004 Semen: \$20

CE	BW	WW	YW	M	TM	GL	CED	SC	REA	MB
102	2.9	49	80	17	42	-0.8	104	1.3	0.15	-0.12
.30	.50	.33	.19	.16		.28	.15	.18	.30	.23

EPDs for January 2009 **Homo Polled Diluter Free**

Homozygous polled, diluter free, total outcross Freedom genetics. Excellent genetic package featuring the beefmaker Extra Exposure on the top side of the pedigree and the famed Barbara cow family on the bottom side. A young sire that's really stamping his progeny with structural correctness and flawless phenotype. Extra Hot's performance plus dam sports a 106 weaner weight ratio.

Red Purebred

Quality Grade	QG	GPD
0	0	
Tenderness	T GPD	
1	0	0
		-0.349
Feed Efficiency	FE GPD	

FHG FLYING H EXTRA 150D
JRI EXTRA EXPOSURE 285L71 ET
JRI MS POLLED SWEETIE 285C6

KIT TABASCO J26 ET
MGA BARBARA 278M
MGA GI BARBARA 936J

HFGC HF Roscoe 34P59 ET



AMGV 897100
Born: 2/23/2004 Semen: \$20

CE	BW	WW	YW	M	TM	GL	CED	SC	REA	MB
107	-0.9	36	71	16	34	-3.9	106	0.3	0.26	-0.2
.26	.44	.34	.24	.22		.26	.20	.19	.33	.25

EPDs for January 2009 **Homo Polled Red**

Roscoe's popularity is definitely on the rise with the powerful progeny he's producing. The beautiful Roscoe daughter photographed above was the big seller red heifer calf on the '07 Kansas/Nebraska "Pick of the Herds" Female sale. Roscoe's "JR" grandam IHF Miss Nugget 34U was one of the breeds all-time great Dam of Distinction producers with unbelievable longevity... 15 natural born calves.

Red Purebred

Quality Grade	QG	GPD
0	0	
Tenderness	T GPD	
2	0	0
		-0.698
Feed Efficiency	FE GPD	

VAA LEACHMAN NEW DAY 205B
SLC FREEDOM 178F ET
BB MISS 61Y

GAA GARST BULL Z138
HFGC MS PLD HART'S RUBY
IHF MISS NUGGET 34U

HFGC HF Ruben 34L21



AMGV 771142
Born: 2/16/2001 Semen: \$20

CE	BW	WW	YW	M	TM	GL	CED	SC	REA	MB
109	-1.9	35	69	19	37	-3.3	106	0.1	0.22	-0.23
.45	.71	.58	.35	.30		.53	.26	.32	.50	.44

EPDs for January 2009 **Polled** **Red**

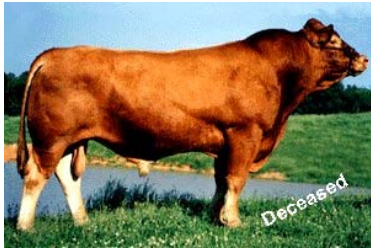
Powerful 2003 Reserve National Champion Bull that should really produce beef, butt, guts and eye appeal. Ruben swept the 2002 Kansas State Fair; 2002 American Royal and climaxed his show career winning National Champion honors in Denver. Ruben's dam is proving to be one of the breeds elite donor females and Ruben's Dam of Distinction grandam, Nugget 34U, is still actively producing embryos at 17 years of age. Power packed genetics and the first progeny report spells calving ease plus superb growth.

Red Purebred

Quality Grade	QG GPD
Tenderness	T GPD
Feed Efficiency	FE GPD

VAA LEACHMAN NEW DAY 205B
SLC FREEDOM 178F ET
BB MISS 61Y
GAA GARST BULL Z138
HFGC MS PLD HART'S RUBY
IHF MISS NUGGET 34U

HHF Polled Summit 648U



AMGV 173081
Born: 9/28/1986 Semen: \$25

CE	BW	WW	YW	M	TM	GL	CED	SC	REA	MB
103	3.9	38	68	21	40	1.4	107	0.3	-0.14	-0.08
.84	.96	.95	.90	.90		.95	.86	.89	.92	.91

EPDs for January 2009 **Homo Polled** **Red**

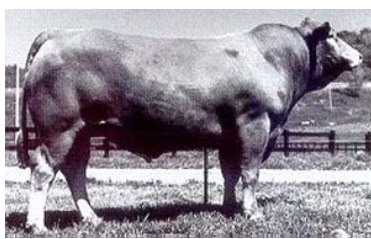
This homozygous polled sire's power is sweeping the country. His sons and daughters have topped as many or more sales as any red sire in the breed. Three sons in the '93 National Gelbvieh Sale averaged \$10,000, with a \$15,000 high. Polled Summit also sired the Champion Pen of Three and Champion Pen of Five Bulls at the '93 National Show. Summit repeated the feat by siring the Champion pen of Three at the '94 Nationals and that pen show is geared towards the commercial man. Polled Summit daughters carry his stamp of greatness, complete with a moderate frame, depth of rib and beautiful teat/udder combinations.

Red Purebred

Quality Grade	QG GPD
0	0
Tenderness	T GPD
2	0
	-0.698
Feed Efficiency	FE GPD

DGA COWBOY
BMB STATESMAN P214
BMB MISS 16K
FLOTO
CPG MISS FLOTO PRIDE 187R
ELA MISS L182

HHF Summits Pride A36ET



AMGV 327936
Born: 9/20/1991 Semen: \$15

CE	BW	WW	YW	M	TM	GL	CED	SC	REA	MB
110	1.3	35	62	22	40	0.1	110	0.8	0.05	-0.13
.46	.78	.66	.47	.42		.61	.31	.51	.54	.49

EPDs for January 2009 **Homo Polled** **Red**

Thick, eye appeal, and great muscling. Out cross for many Gelbvieh breeders. Solid EPDs! Red and homozygous polled. A red sire well tested without a Freedom pedigree. They are thick, well muscled and have plenty eye appeal.

Red Purebred

Quality Grade	QG GPD
Tenderness	T GPD
Feed Efficiency	FE GPD

BMB STATESMAN P214
HHF POLLED SUMMIT 648U
CPG MISS FLOTO PRIDE 187R
EGF POLLER'S PRIDE
HHF W9 MISS GLORY 238M
LNR MISS FLOTO 238M

JCGR Bar GT Louie 2J



AMGV 656047
Born: 1/14/1999 Semen: \$25

CE	BW	WW	YW	M	TM	GL	CED	SC	REA	MB
102	0.9	47	83	14	38	-2.8	103	0.6	0.36	0.04
.76	.91	.85	.76	.58		.87	.56	.73	.78	.76

EPDs for January 2009 **Homo Polled** **Red**

Sold for \$11,000 for 50% interest at the "Spirit of the West" Jumping Cow Fall '99 Sale. 2nd in class to the eventual 2000 National Champion and Futurity Champion bull, Boo Ba. Sired by increasing popular 'Bud' bull - National and Futurity Champion! His dam, the Money Cow, is absolutely fault free. Money Cow - dam of \$6,00 Dawn heifer... good cows produce good offspring! Top producers in Denver appreciate his overall rib, thick top and rump, his deep twist, large quarter, and enormous square butt.

Red Purebred

Quality Grade	QG GPD
0	0
1	1
	10.49
Tenderness	T GPD
2	1
	-1.447
Feed Efficiency	FE GPD
1	2
	0
	-2.9247

GKT BOO BOO 155E
GKT BUD 11G
GKT KATIE
PGRS SHINING SPIRIT
WRGA 049C
WRGA 041Z

JDPD Astro 407S



AMGV 977933
Born: 3/2/2006 Semen: \$25

CE	BW	WW	YW	M	TM	GL	CED	SC	REA	MB
102	2.4	42	72	20	41	-2.5	105	0.5	0.07	-0.08
.18	.33	.22	.12	.07		.14	.06	1	.12	.09

EPDs for January 2009 **Multiple Polled** **Red**

Astro is what the beef business is all about... meat, middle and total pounds. His individual birth to growth spread is phenomenal... 88 pound birth with to 808 pound 205 day weight. Astro's first calf dam traces to the famed Sugar cow family that helped mold this great breed. The total package... flawless phenotype, beef, butt and guts.

Red Purebred

Quality Grade	QG GPD
Tenderness	T GPD
Feed Efficiency	FE GPD

HAD SLEEP TIGHT ET
JDPD ROLEX 151M
VTG VISTA MS FREEDOM 0151K
HAD LANCELOT 795L
HAD PRINCESS OF ALOT 407P
HAD 140 L

JDPD Rolex 151M



AMGV 805051
Born: 6/20/2002 Semen: \$20

CE	BW	WW	YW	M	TM	GL	CED	SC	REA	MB
107	0.8	36	61	16	34	-3.1	108	0.6	0.08	-0.07
.40	.74	.60	.46	.17		.57	.15	.29	.30	.22

EPDs for January 2009 **Homo Polled** **Red**

2005 Reserve National Champion. 2004 Louisville Reserve Grand Bull. Th deep-sided long hiped, muscular Shining Spirit grandson should really compliment Freedom daughters. Grand bull and the Houston Stock Show, Colorado and Oklahoma State Fair.

Red Purebred

Genesis STAR	Quality Grade	QG	GPD
	0	0	
	Tenderness	T GPD	
	0	0	-0.8
	Feed Efficiency	FE GPD	

PGRS SHINING SPIRIT
HAD SLEEP TIGHT ET
WRGA PRINCESS OF POWER

SLC FREEDOM 178F ET
VTG VISTA MS FREEDOM 0151K
VTG VISTA HORIZON 7201G

JDPD Tag Hauer 164S



AMGV 1012688
Born: 10/21/2006 Semen: \$25

CE	BW	WW	YW	M	TM	GL	CED	SC	REA	MB
103	1.9	44	80	19	41	-1.8	106	0.6	0.07	-0.01
.01	.31	.21	.15	.09		.01	.01			

EPDs for January 2009 **Double Polled** **7/8 Red Gelb**

Beef packing machine I loaded with Beef, Butt & Guts. 2008 Houston Stock Show Champion Bull. Lead bull in the 2008 Reserve National Champion Pt of 5 Bulls in Denver. Rock solid genetics that'll help keep the Gelbvieh bree the #1 Continental Breed of Choice.

Red 88%

Genesis STAR	Quality Grade	QG	GPD
	Tenderness	T GPD	
	Feed Efficiency	FE GPD	

HAD SLEEP TIGHT ET
JDPD ROLEX 151M
VTG VISTA MS FREEDOM 0151K

TLR COCOA 35C
POPE 164L
TAU MS TRIUMPH 604F

JEB Polled Gizmo 17Z



AMGV 264903
Born: 2/9/1990 Semen: \$20

CE	BW	WW	YW	M	TM	GL	CED	SC	REA	MB
107	0.3	34	65	27	44	-2.8	110	0.6	0.15	-0.3
.87	.95	.93	.86	.86		.93	.80	.85	.92	.91

EPDs for January 2009 **Homo Polled** **Red**

Leading sire for maternal strength and that all-important daughters stayabili trait. One of the most widely used sires in the breed with over 2,300 progen recorded at the American Gelbvieh Association.

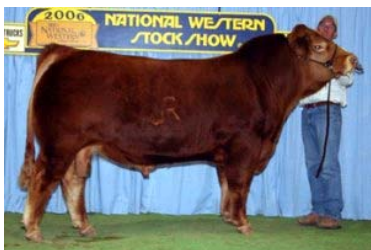
Red Purebred

Genesis STAR	Quality Grade	QG	GPD
	0	1	
	Tenderness	T GPD	
	2	0	-0.698
	Feed Efficiency	FE GPD	

FLOTO
ATM TEJAS ROLLS ROYCH 868
FDA MISS ARATA 868K

LAR MR SENSATION 506S
JEB MS. SENSATION 31X
IHF MISS HAMBURG 4U

JRI Fully Exposed 270N83



AMGV 883933
Born: 8/21/2003 Semen: \$20

CE	BW	WW	YW	M	TM	GL	CED	SC	REA	MB
97	4	42	76	19	40	-1.8	101	1.2	0.16	-0.02
.43	.68	.55	.34	.18		.65	.17	.39		

EPDs for January 2009 **Homo Polled** **Diluter Free**

Diluter-free red genetics...totally unrelated to Freedom and all red sire lines. Crowd favorite Senior Champion Bull in the 2006 National Gelbvieh Show.

Impressive stats: 82# modest birth, 742# WW/105 ratio, 1258# YW/106 ratio, 184 cm. yearling pelvic, 39.1 cm yearling scrotal, 4.83# ADG, 0.08 yearling backfat and 14.1" ribeye.

This Judd Ranch 270 cow family is one of the shortest gestation/superb growth cow families in the breed.

Red Purebred

Genesis STAR	Quality Grade	QG	GPD
	0	0	
	Tenderness	T GPD	
	1	0	-0.349
	Feed Efficiency	FE GPD	

FHG FLYING H EXTRA 150D
JRI EXTRA EXPOSURE 285L71 ET
JRI MS POLLED SWEETIE 285C6

JBOB CAROLINA CPR
JRI MS LIFESAVER 270K73
JRI MS PLD JONI 270D63 ET

JRI Heavy Equipment 125M3



AMGV 805882
Born: 2/1/2002 Semen: \$25

CE	BW	WW	YW	M	TM	GL	CED	SC	REA	MB
109	0.2	40	86	19	39	-3	109	0.6	0.03	-0.23
.58	.84	.75	.55	.29		.80	.25	.53	.35	.26

EPDs for January 2009 **Homo Polled** **Red**

Full brother to breed's no 1 selling calving ease AI sire JRI Pld Free Agent 125J3. Heavy Equipment is homozygous polled by DNA testing and his full brother Free Agent is proven homozygous polled and diluter free.

Red Purebred

Genesis STAR	Quality Grade	QG	GPD
	0	1	0
	Tenderness	T GPD	
	2	0	-0.698
	Feed Efficiency	FE GPD	
	2	2	-3.5196

VAA LEACHMAN NEW DAY 205B
SLC FREEDOM 178F ET
BB MISS 61Y

JRI PLD GRAND PRIX ET
JRI MS PLD GRAND PRIX 125G3
JRI MS PLD SUMMIT 125D3

JRI New Trend 217D5

AMGV 434820
Born: 2/3/1994 Semen: \$10

CE BW WW YW M TM GL CED SC REA MB
99 4.2 36 66 8 26 1.2 104 0 -0.28-0.13
.59 .88 .82 .70 .67 .84 .57 .78 .75 .72

EPDs for January 2009 **Homo Polled Red**

This homozygous polled sire stamps as much phenotype and dimension into his progeny as any bull in the breed. Daughters are deep ribbed, easy fleshing females that know how to bring home the beef.

Red Purebred

Genesis STAR	Quality Grade	QG GPD
	Tenderness	T GPD
	Feed Efficiency	FE GPD

ATM TEJAS ROLLS ROYCH 868
DBC MR POLL ROLLS ROYCE 94Z
DBC MISS PROSPECTOR 65X

HHF POLLED SUMMIT 648U
JRI PLD CLASSY 217B4
JRI 217Z3

JRI Pd Grand Primo 43G5

AMGV 574098
Born: 2/1/1997 Semen: \$10

CE BW WW YW M TM GL CED SC REA MB
104 2.6 47 82 24 48 0.1 100 0.4 0.02-0.05
.54 .87 .79 .68 .54 .83 .47 .66 .72 .69

EPDs for January 2009 **Hetero Polled Red**

A true beef and performance producer. Impeccable Dam of Distinction dam. The total package... growth, maternal and gain ability.

Red Purebred

Genesis STAR	Quality Grade	QG GPD
	Tenderness	T GPD
	Feed Efficiency	FE GPD

ATM TEJAS ROLLS ROYCH 868
JRI PLD GRAND PRIX ET
JRI MS PLD PREFERENCE 285A5

HHF POLLED SUMMIT 648U
JRI MS PLD SUMMIT 43C4
JRI MS CITATION 43W3

JRI Pd Resource 197E51

AMGV 486762
Born: 2/8/1995 Semen: \$30

CE BW WW YW M TM GL CED SC REA MB
104 1.1 51 90 20 46 -0.3 106 0.4 0.2 -0.11
.68 .90 .85 .71 .69 .85 .60 .67 .79 .77

EPDs for January 2009 **Hetero Polled Red**

This ideally balanced sire produces modest birth, superior growth while maintaining excellent maternal values. Total outcross to all the Freedom lines. Powerful Dam of Distinction cow family.

Red Purebred

Genesis STAR	Quality Grade	QG GPD
	Tenderness	T GPD
	Feed Efficiency	FE GPD

FLOTO
ATM TEJAS ROLLS ROYCH 868
FDA MISS ARATA 868K

TAU SHAKER 20Z
JRI MS PLD PERFORMER 197C4
JRI 197Z3

JRI Peak Performer 213N5

AMGV 852295
Born: 2/8/2003 Semen: \$10

CE BW WW YW M TM GL CED SC REA MB
102 2.1 41 71 19 40 -0.9 106 0.3 -0.24-0.13
.39 .70 .58 .43 .28 .66 .26 .50 .33 .25

EPDs for January 2009 **Homo Polled Red**

Spring 2005 New Sire Addition...first calf crop at Judd Ranch looks fantastic

One power-packed Free Agent son out of one super Judd Ranch cow family Dam, JRI Ms Pd New Design 213G4 stats: 99 BW ratio (85 lb. average); 11 WW ratio (766 lb. average/no creep); 112 YW ratio (1,348 lb. average on four sons).

Bundle of beef, butt and guts in a flawless made package.

Red Purebred

Genesis STAR	Quality Grade	QG GPD
	Tenderness	T GPD
	Feed Efficiency	FE GPD

SLC FREEDOM 178F ET
JRI PLD FREE AGENT 125J3
JRI MS PLD GRAND PRIX 125G3

JRI NEW TREND 217D5
JRI MS PD NEW DESIGN 213G4
JRI MS EQUALIZER 213Y3

JRI PLD Free Agent 125J3

AMGV 665810
Born: 1/28/1999 Semen: \$20

CE BW WW YW M TM GL CED SC REA MB
112 -3.5 29 62 13 28 -4.9 107 0.7 -0.38-0.26
.81 .94 .91 .84 .75 .92 .68 .85 .85 .84

EPDs for January 2009 **Homo Polled Diluter Free**

This homozygous polled, diluter free son of Freedom is proving to be one of the best calving ease sires in the breed. Note his superior calving ease, low birth and gestation length EPD strength in the breed's top 5% or better.

Red Purebred

Genesis STAR	Quality Grade	QG GPD
	Tenderness	T GPD
	Feed Efficiency	FE GPD

VAA LEACHMAN NEW DAY 205B
SLC FREEDOM 178F ET
BB MISS 61Y

JRI PLD GRAND PRIX ET
JRI MS PLD GRAND PRIX 125G3
JRI MS PLD SUMMIT 125D3

JRI Pld Grand Prix ET



AMGV 428643
Born: 1/25/1994 Semen: \$20

CE	BW	WW	YW	M	TM	GL	CED	SC	REA	MB
99	3.4	49	87	20	45	-0.8	103	0.8	0.21	-0.13
.68	.92	.89	.79	.78		.90	.70	.81	.86	.84

EPDs for January 2009 **Hetero Polled Red**

Noted as a breed leader for substance, beef and natural fleshing ability. Sons are beef packing machines and his daughters are big time producers. Grand Prix's dam, 285A5, is one of the most dominant females ever in the breed and she's still raising babies and producing embryos at 16 years of age.

Red Purebred

Quality Grade		QG	GPD
0	1		
Tenderness		T GPD	
2	0	0	-0.698
Feed Efficiency		FE GPD	

FLOTO
ATM TEJAS ROLLS ROYCH 868
FDA MISS ARATA 868K

JRI BARTLES 406W
JRI MS PLD PREFERENCE 285A5
JRI MS EQUALIZER 285Y4

JRI Prime Cut 406S30



AMGV 989049
Born: 2/18/2006 Semen: \$20

CE	BW	WW	YW	M	TM	GL	CED	SC	REA	MB
111	-0.7	35	66	17	35	-2.1	107	1.1	0.05	-0.19
.26	.36	.26	.21	.18		.36	.17			

EPDs for January 2009 **Homo Polled Red**

If you're needing to add more depth of rib, natural thickness and muscle mass Prime Cut needs to be on your purchase order. His super Dam of Merit dam sports a 105 weaning weight ratio and a 720# average 205 day weight. Prime Cut's full sister JRI 406N30 weaned a 745 pound bull calf her first year.

Red Purebred

Quality Grade		QG	GPD
Tenderness		T GPD	
Feed Efficiency		FE GPD	

FHG FLYING H EXTRA 150D
JRI EXTRA EXPOSURE 285L71 ET
JRI MS POLLED SWEETIE 285C6

JRI PLD FREE AGENT 125J3
JRI MS LEGACY 406L20
JRI MS PLD CELEB 406G10 ET

KCF Bennett C109



AMGV 378643
Born: 4/1/1993 Semen: \$10

CE	BW	WW	YW	M	TM	GL	CED	SC	REA	MB
103	1.5	35	71	31	49	-0.6	107	0.9	0.07	-0.08
.57	.84	.78	.60	.54		.77	.45	.60	.67	.64

EPDs for January 2009 **Homo Polled Red**

C109 offers you power, balance and eye appeal along with breed leading maternal strength. Homozygous polled genetics from a rock solid cow family.

Red Purebred

Quality Grade		QG	GPD
Tenderness		T GPD	
Feed Efficiency		FE GPD	

KCF MAINSTREAM
KCF BENNETT TARGET A10
KCF MISS P2356 T40

KCF BENNETT HORIZON
KCF MISS HORIZON A115
KCF MISS SELECT Y41

KIT Tabasco J26 ET



AMGV 651078
Born: 1/7/1999 Semen: \$20

CE	BW	WW	YW	M	TM	GL	CED	SC	REA	MB
105	1.1	45	79	25	48	-0.5	109	2.2	0.03	-0.02
.68	.90	.85	.72	.58		.86	.49	.68	.77	.74

EPDs for January 2009 **Homo Polled Diluter Free**

Outcross homozygous polled purebred red genetics. Totally non-related to Freedom. Produced '06 National Champion Female.

Red Purebred

Quality Grade		QG	GPD
0	0		
Tenderness		T GPD	
1	0	1	-0.749
Feed Efficiency		FE GPD	

BEA POLLED MIDNIGHT
TLR COCOA 35C
TLR MISS KAISER 449Y

BETZ PREMIER'S BLAQ MAGIC
BETZ MAGIC MUFFIN F64
RMJG MS MACIE 302C

KLBF King Of The Hill 16H 'Hank



AMGV 651744
Born: 11/18/1998 Semen: \$20

CE	BW	WW	YW	M	TM	GL	CED	SC	REA	MB
100	3.6	56	95	12	40	-2.2	114	-0.1	0.03	0.01
.41	.85	.78	.69	.57		.68	.46	.47	.78	.75

EPDs for January 2009 **Homo Polled Diluter Free**

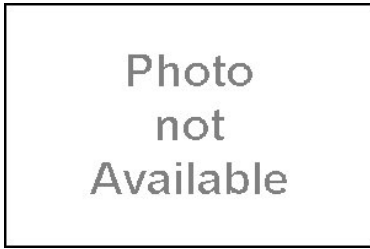
Still dominates all our performance categories
Produces exceptional replacement females
A red bull to use as a "Freedom Alternative"
Hank is deep bodied, deep quartered, high volume, easy traveling bull with performance numbers
Hank calves are very attractive, upheaded, gentle, and very marketable. His daughters have met with great acceptance.
Diluter free

Red Purebred

Quality Grade		QG	GPD
1	0	0	10.29
Tenderness		T GPD	
2	0	1	-1.098
Feed Efficiency		FE GPD	
2	2	2	-3.7396

ELK CK NIGHT TRAIN POLL 28Z
ELK FREIGHTTRAIN 836D
CDG 836X

BMB COLLEGE FUND
KLBF GOLD FUND
NKP PGR MS GOLD 130S

Red Howard 674

CE BW WW YW M TM GL CED SC REA MB
 101 2.8 38 72 20 39 -1.3 103 0.1 -0.02-0.02
 .01 .01 .01 .01 .01 .01 .01 .01 1 .18 .16
 EPDs for January 2009 **Homo Polled Red**

Red Purebred

Quality Grade		QG GPD
0	0	
Tenderness		T GPD
1	0	2
Feed Efficiency		FE GPD

GATZ HEAVYDUTY PERFORMAN
 MHOG MR. HEAVY BLACK
 WAC MS BLACKJACK 061G
 TJB SLEEPY 161F ET
 RED SASSY 152
 RED ISABEL 7017

AMGV 997498
 Born: 2/12/2006 **Semen: \$18**

RHRT Independence L19

CE BW WW YW M TM GL CED SC REA MB
 109 0.1 44 91 29 51 -1.6 107 0.3 -0.01-0.02
 .54 .81 .71 .53 .29 .76 .21 .42 .34 .26
 EPDs for January 2009 **Hetero Polled Red**

Red Purebred

Quality Grade		QG GPD
0	0	
Tenderness		T GPD
1	0	2
Feed Efficiency		FE GPD

KCF BENNETT IDEAL G182
 KCF BENNETT J25
 KCF MISS VALUE E86
 TOP RED JET E1 ET
 TOP MIS RED JET E270H7
 TOP MISS EZE E270

Spring 2005 New Sire Addition - total outcross for Freedom daughters. Syndicated two years ago as one of the top selling bulls in the breed. Independence is producing low birth weights, quick weight gain and sound/easy fleshing progeny. Excellent combo of flawless phenotype and excellent EPD strength.

AMGV 766448
 Born: 3/5/2001 **Semen: \$30**

RID R Collateral 2R

CE BW WW YW M TM GL CED SC REA MB
 100 2.4 34 63 16 33 -1.9 102 0.4 0.05-0.04
 .50 .78 .69 .32 .12 .70 .10 .26 .25 .17
 EPDs for January 2009 **Homo Polled Diluter Free**

Red Purebred

Quality Grade		QG GPD
0	1	
Tenderness		T GPD
2	1	2
Feed Efficiency		FE GPD

SLC FREEDOM 178F ET
 JCGR BAR GT FLASHBACK 410M
 BDCG CLAUDIA 1144J
 JCGR BAR GT LOUIE 2J
 JCGR BAR GT LONI 27N ET
 WRGA MS 16B

The breed leader for Tenderness through GeneSTAR testing. Collateral brings the complete package, including a rarity of 5 out of 6 Tenderness genes. Nursed awesome first calf heifer that flat knows how to spread low birth to robust growth. If you are looking for that sire to add the all-important Tenderness genes without sacrificing phenotype, muscle and structure - loc no further. Homozygous polled by DNA testing.

AMGV 938431
 Born: 2/5/2005 **Semen: \$25**

RUP Ruppel Yukon 301P

CE BW WW YW M TM GL CED SC REA MB
 101 2.9 50 91 23 48 -0.7 107 1 0.33-0.01
 .39 .65 .53 .30 .19 .54 .17 .32 .31 .23
 EPDs for January 2009 **Homo Polled Diluter Free**

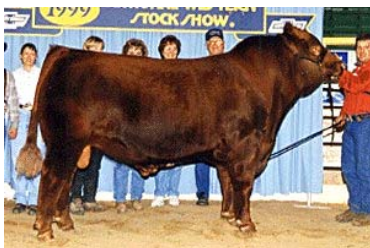
Red Purebred

Quality Grade		QG GPD
0	0	
Tenderness		T GPD
2	0	0
Feed Efficiency		FE GPD

KCF BENNETT ARSENAL E123
 KCF BENNETT IDEAL G182
 KCF MISS VISION E43
 VRT RUP LAZY TV HOTFUDGEJ
 RUP RASPBERRY 137M
 DMF HEARTBREAKER 1747H

Total outcross to all red sire lines. Homozygous polled by DNA test. Diluter free, top selling bull in Colorado Seedstock Plus Bull Sale at \$7,350. Diluter free red genetics with lots of volume and capacity in this growth sire.

AMGV 889624
 Born: 1/11/2004 **Semen: \$25**

SLC Freedom 178F ET

CE BW WW YW M TM GL CED SC REA MB
 106 -0.5 40 83 10 30 -5.9 107 0.3 0.12 -0.3
 .91 .97 .95 .91 .89 .96 .85 .91 .94 .93
 EPDs for January 2009 **Homo Polled Diluter Free**

Red Purebred

Quality Grade		QG GPD
0	1	0
		6.73
Tenderness		T GPD
2	0	1
Feed Efficiency		FE GPD

GLT SENSATION'S DAY 21Y
 VAA LEACHMAN NEW DAY 205B
 VAA 023Z
 BB MR FORKAS 1S (JSE M2)
 BB MISS 61Y
 BB BELL ORCHID

Freedom is a calving ease bull that is homozygous polled, diluter free and sires cattle that grow. He continues to sire sale toppers, show winners, and you will be proud to be the owner of a bull, steer, or female that is sired by Freedom. Look at his EPDs - a leader in calving ease, birth weight, growth, gestation and daughter's calving ease. This dark red bull can be used with confidence!

AMGV 601105
 Born: 2/26/1996 **Semen: \$25**

TJB Jagermeister 229M - ET



AMGV 802499

Born: 1/18/2002 Semen:\$20

CE	BW	WW	YW	M	TM	GL	CED	SC	REA	MB
98	3.5	54	92	-2	25	-3.1	101	0	0.2	-0.17
.52	.84	.76	.58	.36		.75	.33	.56	.64	.60

EPDs for January 2009

Homo Polled

Red

2005 New Sire Addition that swept the 2003 Breeder's Choice Bull Futurity and topped the 2003 National Sale at \$50,000. Jagermeister is one tremendous individual with loads of style and power. His Polled Gizmo/JR dam, Jasmine, is one of the top donor females ever owned by the breed leading TJB Gelbvieh program in Georgia.

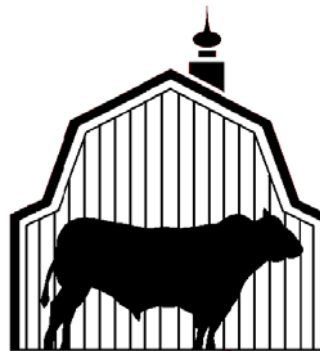
Red Purebred

Genestar	Quality Grade		QG	GPD
	0	0		
	Tenderness		T GPD	
	2	0	0	-0.698
Feed Efficiency		FE GPD		

- SLC FREEDOM 178F ET
- BTI RED ALERT 2077K
- BTI LADY GRANITE 2001E ET
- JEB POLLED GIZMO 17Z
- TJB 59D5 JASMINE 177G ET
- TJB MISS JR'S JENNY 59D ET

Ordering and Shipping

- We deliver by Bull Barn truck, FedEx, UPS or US Mail
- Information needed: Name, address, phone, email address (if applicable), and the date the shipment is needed.
- You may place your order by phone, FAX, or email.
- Free shipping on orders of 100 units or more.
- Overnight (or 2-day, east or west coast) service available at extra charge



Eldon and Kathy Starr

210 Starr Drive

Stapleton, NE 69163

Phone: 1-800-535-6173

FAX: 1-308-587-2248

Email:

bullbarn@accessdirectwb.net

Web: www.bullbarn.com

Breed Association:

American Gelbvieh
Association

10900 Dover Street
Westminster, CO 80021
303-465-2333

FEED EFFICIENCY INDEX

A brief explanation of Bovigen's Feed Efficiency index. This is a DNA test that identifies an animal's ability to efficiently convert feed. The markers were identified which allows producers to identify genetic lines towards more efficient feed conversions to maintain less cost in production. Studies have shown that feed efficiency has six times more effect on feedyard profitability than average daily gain. In a cow calf operation feed cost (grass and purchased feed) will normally be more than one half the cost of production. The GeneSTAR Feed Efficiency test is made up of four markers. For an example: a feed efficiency GPD of -3.0 will eat 3 pounds less feed per day than one with a 0. On a 150 day feeding period with cost of \$165.00 per ton the -3.0 GPD animal will cost \$37.00 less to feed without effecting performance or carcass quality.